

**ECHOES  
OF 1920**

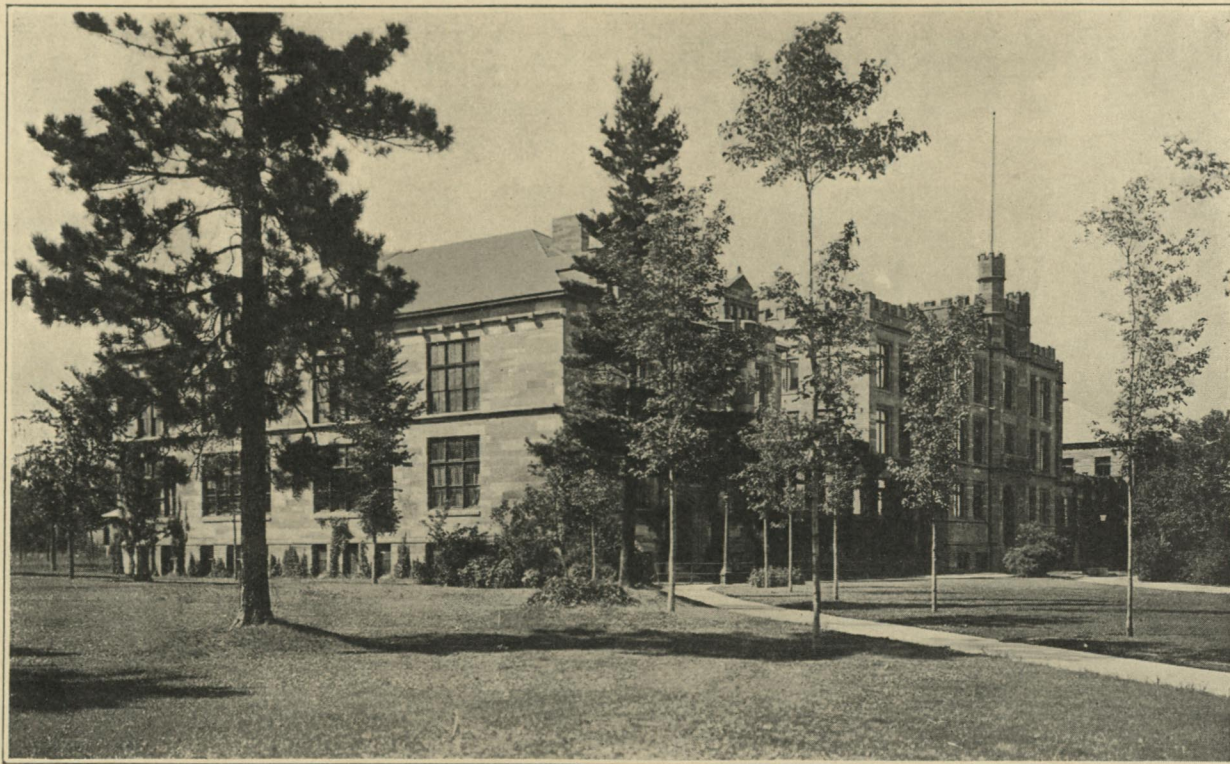


# ECHOES OF 1920



Issued as the June number of  
The Northern Normal News  
June 21, 1920





### 1920 Class Song

In a sheltered nook among the pines of Cloverland,  
Beneath our banner old,  
The Olive and the Gold,  
Our Northern Normal dwells in mystic silence grand,  
A regal queen on Lake Superior's strand.  
From coast to coast, from sea to sea,  
Wherever we may roam, wherever we be,  
Each loyal heart returns again  
To thee, our Alma Mater, N. S. N.

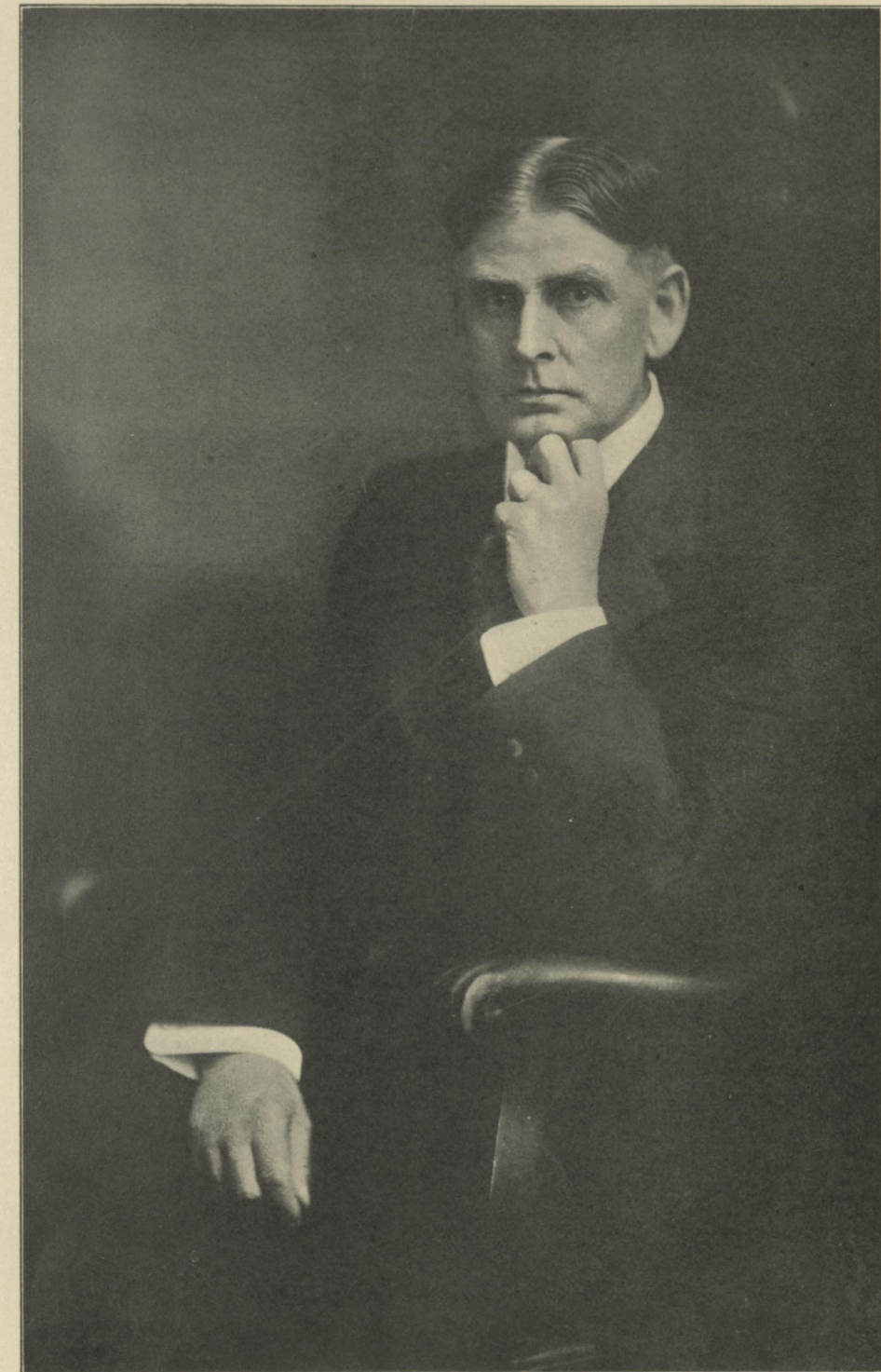
#### CHORUS:

Firm stands our Normal just as of old,  
Bright gleams our banner, Olive and Gold;  
Long may thy praises ring forth again,  
Dear Alma Mater, dear N. S. N.

Tho' years may pass and dim the words on memory's page  
Our hearts will still be true  
Dear Normal School, to you.  
May the light gleam forth undimmed by cares of time or age  
And brighter still each passing year be made;  
And may this echo, sweet and low,  
The Purple and the Gold, 1-9-2-0-  
Renew each tender memory,  
While hearts unite again, and sing to thee.

#### CHORUS:

Edith Sundin, '20.



JAMES H. B. KAYE, M. A.  
President, Northern State Normal School.





THE FACULTY

## CLASS OF 1920



EVELYN ANDERSON  
Michigamme  
Osiris  
"In her quietness there is charm"



HILDA M. ANDERSON  
Ishpeming  
Ygdrasil  
"In sweet virtues rich"



RUTH O. ANDERSON  
Iron Mountain  
Osiris  
Glee Club, 1919  
"To Arms for Liberty"  
"Success is the fruit of the tree they call work"



JULIUS ANDERSON  
Marquette  
Principals' and Superintendents' Course  
Ygdrasil, Treasurer  
Sons of Thor, President and Vice President  
Mathematics Club  
Vice President of Class, 1919  
"To Arms for Liberty"  
"The Gypsy Rover"  
"Bring therefore all the forces that you may  
And lay incessant battery to her heart"



IDA ANDERSON  
Ironwood  
Ygdrasil  
Glee Club  
"I'm sorry that I spelt the word"



HELEN BENEY  
Negaunee  
College Preparatory Course  
Osiris  
Basketball  
Glee Club  
"For me all things are easy"



HELEN BRAINERD  
Marquette  
College Preparatory Course  
Osiris  
"A pleasant manner wins her hosts of friends"



AILE BECKMAN  
Diorite  
Home Economics Course  
Ygdrasil  
"Beware! I may yet do something sensational"



VIOLET CLIFF  
Hancock  
Osiris, Treasurer  
"Jayville Junction"  
Declamatory Contest  
Glee Club  
"To Arms for Liberty"  
"Much could be said if one could read her mind"



CHARLOTTE CHAMBERS  
Mackinac Island  
"It is not good that man should be alone"



BEATRICE CRAWFORD  
Stanton  
Osiris  
"All the world loves a quiet girl"



ETHLYNE DE HUDON  
Ironwood  
College Preparatory Course  
French Club  
Ygdrasil  
"Come as you are—tarry not over your toilet"



GRETCHEN DOELLE  
Marquette  
Ygdrasil  
Class Treasurer, 1919 and 1920  
Class Historian  
"Quick to learn, quick to see,  
A busy girl she'll always be"



BRIDGET DEE  
("Bud")  
Hancock  
Kindergarten Course  
Ygdrasil  
Glee Club  
"To Arms for Liberty"  
"The Gypsy Rover"  
"Our number would not be complete without her"



CATHERINE DENSMORE  
Marquette  
Art Course  
Ygdrasil  
French Club  
Salutatorian  
Phi Epsilon  
"Some people are born fortunate"





ELIZABETH ELLISON  
(Lovie)  
Marquette  
College Preparatory Course  
Ygdrasil  
"When I was in Duluth"

RUDOLPH ERIKSSON  
Marquette  
Principals' and Superintendents' Course  
Ygdrasil  
Class President, 1919 and 1920  
Sons of Thor  
S. A. T. C., Kalamazoo College  
Phi Epsilon  
"We shall not look upon his like again"

ESTHER FAGERBERG  
Gwinn  
Osiris  
T. S. T. L.  
Phi Epsilon  
"A modest blush she wears, not formed by art"

MINNIE FRITZ  
Marquette  
Ygdrasil  
"Brown eyes express most anything. Ask Minnie if you don't think this is so"

ELEANOR FREDERICKSON  
Marquette  
College Preparatory Course  
Ygdrasil  
Oratorical Contest  
"Be to her virtues very kind. Be to her faults a little blind"



OLIVE FOX  
Marquette  
Osiris  
S. G. L. President  
Glee Club  
Declamatory Contest  
Third Honors  
Phi Epsilon  
"To be able to see every side of every question—that is I"

STELLA GORNEY  
Ontonagon  
Osiris  
Pageant of Marquette  
"A simple maid and proper too"

GERTRUDE GIRARD  
Chassell  
Ygdrasil  
"Small and quiet, but a thinker and a doer"

JUDITH HAGBERG  
Iron Mountain  
Osiris  
Glee Club  
"To Arms for Liberty"  
"Why trouble my perfectly good brains over such a little thing as a man"

GEORGE HAGEN  
Marquette  
Manual Arts Course  
Osiris  
Sons of Thor  
S. A. T. C. Olivet College  
"I woke one morning and found myself famous"



MARY HELD  
Ishpeming  
Ygdrasil  
"She hath given a character erect and constant"

MAE JACOB  
Ishpeming  
Ygdrasil  
"A kind heart has she"

VIOLA EPLETT  
Ironwood  
"A pair of blue eyes"

ENGA HANSEN  
Marquette  
Osiris  
Basketball  
Glee Club  
"To Arms for Liberty"  
"What is life without basketball"

IRENE JOLLY  
Hubbell  
Osiris  
"Few people do all they are supposed to do; she does, and more too"



LILLY JOHNSON  
Ironwood  
Ygdrasil, Secretary  
Basketball  
Giftatory  
"A sense of humor and a touch of mirth  
To brighten up the shadowy spots of earth"

VERO JUNE  
Marquette  
Osiris  
Manual Arts Course  
Sons of Thor  
Officers' Training Corps  
(O. T. C.), Fort Sheridan, Ill.  
"To Arms for Liberty"  
S. A. T. C., Kalamazoo, Mich.  
"He paid his courtship with the crowd  
As far as modest pride allowed"

MARY LAMPI  
Mohawk  
Osiris  
Glee Club  
Oratorical Contest  
"Sing we for love and idleness  
None else is worth the having"

ETHEL LARSON  
Gladstone  
Osiris  
"I go my way complacently, as self-respecting persons should"

MARY LONCHART  
Bessemer  
College Preparatory Course  
Ygdrasil  
Basketball  
Glee Club  
"To Arms for Liberty"  
"The Gypsy Rover"  
"Pink cheeks, eyes over-bright  
Singing a dance hall tune"



ANNA LONG  
Escanaba  
Four-Year Course  
Osiris  
Phi Epsilon  
"Who mixed reason with pleasure, and wisdom with mirth"

INGEBORG LUNDIN  
Baraga  
Home Economics Course  
Ygdrasil  
"My tongue within my lips I rein  
For who talks much must talk in vain"

FRANCES McCLARY  
Ironwood  
Kindergarten Course  
Osiris, Vice President  
Declamatory Contest  
Valedictorian  
Phi Epsilon  
"To Arms for Liberty"  
"Lend me thy ears; I have no need of an extra tongue"

DOUGLAS McINTOSH  
Ishpeming  
Principals' and Superintendents' Course  
Sons of Thor  
Ygdrasil, President  
Basketball  
Mathematics Club  
Student Editor of the News  
"Jayville Junction"  
"To Arms for Liberty"  
Pageant of Marquette  
"The Gypsy Rover"  
S. A. T. C., N. S. N.  
"Marry in haste and repent at leisure"

ANNA McLEOD  
Sault Ste. Marie  
Ygdrasil  
"Little bodies have great souls"



HELEN MURPHY  
(Pat)  
Hancock  
Kindergarten Course  
Osiris  
Glee Club  
Class Secretary, 1919-1920  
Basketball  
"To Arms for Liberty"  
"Jayville Junction"  
"Oh, how I love to waltz with you,  
Your little hand in mine"

GOLDSWORTHY MARTENS  
(Goldie)  
Bessemer  
Ygdrasil  
"Jayville Junction"  
"To Arms for Liberty"  
Pageant of Marquette  
"The Gypsy Rover"  
"But alas, no sea I find  
Is troubled like a lover's mind"

EMILIE NEUGEBAUER  
Crystal Falls  
Osiris  
Basketball  
"Not that I love study less, but that I love fun more"

ELSEMA NAULT  
Ishpeming  
Ygdrasil  
"To Arms for Liberty"  
Pageant of Marquette  
"As lithe as a willow, as supple in grace,  
While a smile like a sun-shine beams forth in her face"

RUTH OLSON  
Marquette  
Ygdrasil  
T. S. T. L.  
"Why so quiet in this gay world"





ESTHER OLSON  
Marquette

Ygdrasil  
"A gentle, contented maiden"

LOUISE PARADIS  
Bessemer

College Preparatory Course  
Ygdrasil  
French Club  
Glee Club  
Giftatory  
"Does your work get into  
kinks? Laugh it off"

ROSE POIRRE  
Iron River

Ygdrasil, Vice President  
Vice President S. G. L.  
T. S. T. L.  
"The Gypsy Rover"  
Glee Club  
"To Arms for Liberty"  
"Jayville Junction"  
Phi Epsilon  
"She's happy even though her  
heart  
Is sadly bruised by Cupid's  
dart"

GERTRUDE PRIEBE  
Laurium

Osiris  
Glee Club  
"There was a soft and  
pensive grace  
A caste of thought upon her  
face"

JERRY POUPORE  
Spalding

Class Vice President, 1920  
Principals' and Superinten-  
dents' Course  
Osiris  
French Club  
"He holds the eel of science  
by the tail"



ALICE POWERS  
Republic

Ygdrasil  
"Every little movement has a  
meaning of its own"

EUGENIA QUINN  
Negaunee

College Preparatory Course  
Osiris, Vice President  
Glee Club  
Basketball  
"The Gypsy Rover"  
"Jayville Junction"  
"I stand on the brink of a  
great career; will some-  
one please shove me off"

KSENIA QUICK  
Atlantic Mine

Osiris  
T. S. T. L.  
"In sweet virtues rich"

BERNICE ROBERTS  
(Mickey)  
Lake Linden

Kindergarten Course  
Ygdrasil  
Basketball  
Glee Club  
S. G. L. Vice President  
"To Arms for Liberty"  
"Knowledge is an infinite  
capacity for talking"

ARVILLE ROGERS  
Hancock

Osiris  
"The Gypsy Rover"  
"The post of honor is a  
private station"



JACK ROWE  
Champion

Manual Arts Course  
Sons of Thor  
Ygdrasil, President  
Basketball Captain  
Football  
"Jayville Junction"  
S. A. T. C., N. S. N.  
"I can't help it if I'm  
popular"

MARY RULE  
Iron Mountain

Osiris  
Basketball  
"Jayville Junction"  
Phi Epsilon  
"Absence makes the heart  
grow fonder"

MAYME SEPPLAN  
Ironwood

Kindergarten Course  
Osiris  
Basketball  
Glee Club  
"To Arms for Liberty"  
"The Gypsy Rover"  
"Life seems a jest of fate's  
conniving  
Only secure in everyone's  
conniving"

LYDA SMEDBERG  
Ishpeming

Ygdrasil  
"No matter what others do, I  
must be good"

MAE SOBEY  
Hancock

Commercial Course  
Osiris  
"Of study took she most care  
and hede,  
Not one word spoke she more  
than was nede"



EDITH SUNDIN  
Iron Mountain

Ygdrasil  
Class Song  
Class Constitution  
"A literary reputation once  
earned is never lost"

RUTH THOMAS  
Negaunee

Osiris  
"The Gypsy Rover"  
"To Arms for Liberty"  
"Out of me unworthy and  
unknown  
The vibrations of deathless  
music"

MAUDE TREBILCOCK  
Ishpeming

Osiris  
Mathematics Club, President  
College Preparatory Course  
"A brain exact that in its  
scales  
Can weigh the sun and  
never err"

DORIS TRUSCOTT  
Iron Mountain

Osiris  
Basketball  
"Open justice bends to  
neither side"

GLADYS TRELOAR  
Marquette

Ygdrasil  
Basketball  
"Be gone, dull care, thou  
and I shall ne'er agree"



WINIFRED UDDENBERG  
Iron Mountain

Ygdrasil  
Basketball  
"Blushing is the color of  
virtue"

MYRTLE WARMINGTON  
Houghton

Ygdrasil  
Declamatory Contest  
Pageant of Marquette  
"A happy genius is the gift of  
nature"

AGNES WAGNER  
Detroit

Osiris  
Glee Club  
"The Gypsy Rover"  
"A winning way, a pleasant  
smile"

EDNA WELANDER  
Ishpeming

Osiris  
Glee Club  
"Beauty or wit is all I find"

CATHERINE WITTING  
Marquette

Home Economics Course  
Osiris  
Glee Club  
"Yet graceful ease and  
sweetness void of pride  
Might hide her faults, if  
belle's had faults to hide"



EDWIN C. CALM  
Ishpeming

Manual Arts Club, Secretary  
and Treasurer  
Sons of Thor, Vice President  
and Secretary  
"Jayville Junction"  
Football  
Basketball  
"The rose of no man's land"

MYRTLE ELLIOTT  
Marquette

Osiris  
Basketball  
"To Arms for Liberty"  
Home Talent Show  
"A finger in everything"

HELEN MORRISON  
Marquette

Osiris  
T. S. T. L., Secretary  
"You may know me by my  
happy-go-lucky ways"

HILDEGARDE JOHNSON  
Marquette

Osiris  
T. S. T. L., President  
"All she knows is worth  
knowing"

PETER KIMBER  
Marquette

Ygdrasil  
Manual Arts Club  
Basketball  
"Jayville Junction"  
"Words, words, words"





ETHEL PRICE Marquette Osiris "Oh, Home Economics is the course for me, Because I can specialize on Tucks, you see"	INA WIDELL Escanaba Ygdrasil Mathematics Club "A quick tongue shows a wise head"
Y. G. T. REHNER Hancock Osiris	ALEXANDER MORRISON Marquette Ygdrasil Manual Arts Club



THE CLASS OF 1921

If I were to tell you all of the stunts that the Juniors have been up to this year, I'd have to look through several dictionaries and encyclopedias to get all of the names, verbs, and descriptive words to do it, and after I was all through you'd most probably say that half of it was hot air. Anyhow, since the weather is hot and I am not exactly wild about working today, I guess I'll just tell you a few facts—the most important.

Let me see. I'll begin with athletics, and work up. Our class was well represented in both football and basketball. We made up about half of each team, so you see they couldn't have gotten along without us. Our president, the Honorable Wilbert Treloar, was yellmaster, and through his vocal exercises, if not through ball playing, became a wonderful athlete by the end of the year. And our other officers? Corrinne Jacques was vice president (a peppy one,

too), Goldie Corneliuson treasurer (we had to have one who could be trusted, you know), and Clifford Swanson, our worthy secretary.

On May 14 this illustrious class of 1921 gave their prom. Needless to say, it was one of the most enjoyable events of the year. The rush was another. It would take too long a time for me to describe it, and most of you know about it anyway, so I'll just say that we Juniors just about made mince meat out of the "Great I Am" Seniors. Nuff said.

In pageants or programs of any kind given at the Normal the Juniors were always well represented in both quantity and quality of work. This is not boasting either. One of the faculty members said that there was enough ability in our class this year to make the most brilliant class that the Normal has ever seen.



JUNIOR CLASS GROUP





### OSIRIS

Once more the sands of time have trickled through the hour glass and brought us to the end of a very fruitful year in our society. Talent has abounded and has blossomed out in the many entertainments given this year. Our many meetings have been marked by the pep and enthusiasm of the members and others who witnessed the enjoyable programs of each term.

During the winter term, the meetings were made more inviting by inter-society basketball games between Ygdrasil and Osiris. The spring term was ushered in by a wonderful social evening, in which Ygdrasil also joined with us to make it a success.

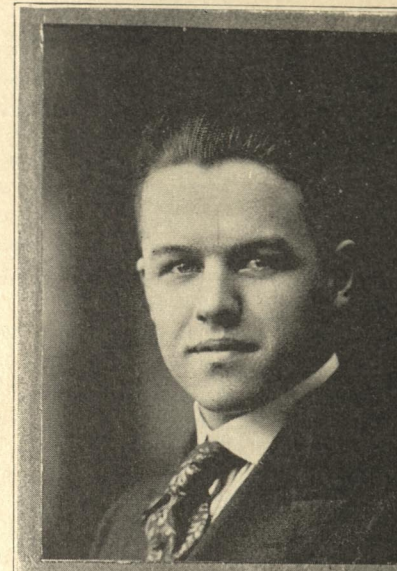
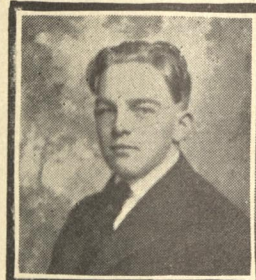
The last meeting this year was a spelling match between Ygdrasil and Osiris. Although Osiris did not win, they put up a pretty good fight for it. Here's hoping that Ygdrasil and Osiris may get together next year and have more of these intellectual contests.

Oh, here's to Osiris,  
May you prosper and live,  
From whom students receive,  
As much as they give.



Top—Clifford Van Iderstine.  
Left—Vero June.  
Right—Andrew Steele.

*Osiris*



CLARENCE BEAGLEHOLE  
President



F. R. COPPER  
Adviser



GRANT BAIRD  
Vice President



### YGDRASIL, 1919-'20

The Ygdrasil Literary Society enjoyed the best period of its existence during the past school year. Great enthusiasm was manifested in the society by the students, and splendid programs kept that interest keyed up all year.

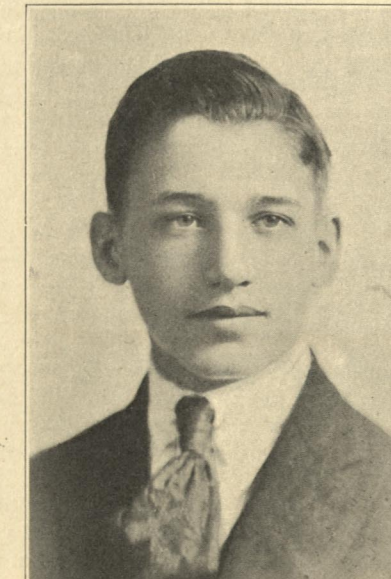
Jack Rowe, now teaching in the South, Miss Gretchen Doelle and Clarence Beaglehole have served the society as presidents, their terms of office coming in the order named.

The presidents endeavored to keep the Ygdrasil activities up to the high standard set by their predecessors.

During the fall term, with Jack Rowe as president, Ygdrasil showed the way to the societies of the school by putting on one of the best programs ever given by a Normal literary society. A comic debate, held later in conjunction with the Osiris Literary Society, proved to be one of the



PEARL BOWDEN  
Secretary



WILBERT TRELOAR  
Treasurer



LILLY JOHNSON  
Secretary



best received entertainments put on by Normal students.

In the winter, the athletic activities occupied much of the time and interest of the student body, so the officers were compelled to forego many specialties they had planned.

This term, under the leadership of Clarence Beaglehole, the society is ending its year in a blaze of glory. A joint party of Osiris and Ygdrasil proved to be the biggest event of the term as far as the societies were concerned. A splendid program, given before the party, attracted a large crowd. The students then went to the gymnasium, where Oriental tom-toms were wafted to their ears, and where the sound of the latest syncopations brought to them that inspiration that they couldn't resist. Their feet just naturally couldn't stop gliding, so the crowd danced until 11:30. To be fair, just, considerate, and magnanimous, we give all credit for the party to the president of Osiris, Clifford Van Iderstine.

To Mr. F. R. Copper, Ygdrasil faculty advisor, goes the credit and honor for anything that the Ygdrasil has accomplished this year. Never complaining when things went wrong, always looking on the bright side of life, working unceasingly, and steadily refusing to concede failure when failure seemed imminent, he helped Ygdrasil through a period of doubt and uncertainty and enabled it to make its splendid finish. The officers of Ygdrasil and the members of the society feel that the school has been made better by his presence. To the senior members of the society, he will forever remain a shining instance of worthy patience and honest endeavor.

This gives a very meager account of the diverse activities of the Ygdrasil this past year. Limited space prevents a more elaborate write-up.

### The Glee Club

Every member of the Glee Club has enjoyed a successful year's work under the leadership of Miss Linton. Although our voices did not harmonize in the beginning we did not give up, and before the end of the first term we had accomplished remarkable results.

Meetings were held every Wednesday afternoon from three-thirty to five o'clock. Every other week we studied the very best class of music, including the opera of Carmen, and the operetta "The Gypsy Rover", the Senior class performance. On the other Wednesdays we enjoyed delightful programs which were furnished by the members of our club.

Our officers, Goldie Corneliussen, president, and Florence Ryan, secretary, have successfully performed their duties and have helped to make the club a success. It has been very interesting to note the development of the voices, and we feel that we have accomplished this through earnest work. We have learned to appreciate the best music. We shall always remember the happy hours spent in the Glee Club, and wish to encourage all students to join the club next year.

"Then here's to our club,  
And members so true;  
Here's to our leaders  
And officers too.

Let's boost for the Glee Club  
And ever suggest  
That of organizations  
It's one of the best".

Inga C. Anderson.

### Mathematics Club

Spose you wuz a ex-mathematics member of a mathematics klub, what talked about magik squares and swan pans, and one day a ladie in a blue dress swingin a silver locket cum along with a pitcher of your klub and told you a nice story of how you wuz goin to be showed in *The Normal News* in that there pitcher and woodent somebody rite all about the klub? Then after nobudy else wood rite about it they up en said tuh you, tail-end like—"How bout you, Frek, coodent you rite us up? and then patted you on the back like with nice things they sez to you, what'd you do?

Well, that wuz wat I felt like doin but I sez to myself, mebbe we dont like to put worms on the hook neither, but we gotta if were gonna catch any fish. So hear I am with my pencil in one hand and a mach stick in my mouth sos I kin chew idees out of it, and then I gotta start over.

When Mr. Spooner started the klub agen last fall he sed we ought to join becuz there'd be lots of things what he couldn't tell about (in class, I mean) and maybe we'd like to no about them. So we chose Maud Trebilcock fer are president becuz she had lots of mathematics and we thot she cud tell us lots. Along of her wuz Anna Harrington who noed just as much, so we chose her fer are vice president. Doug McIntosh wor glasses so we chose him fer secretary-treasurer.

Anna Harrington talked about the development of the decimal system at are first meetin. Gee! I'd like to study them there kind of decimals! Yuh don't have to figger out why Tom Smith and Company failed when they had runnin expenses of \$.16538 on the dollar and their incum wuz \$.14829 on the dollar and they had to meet the interest on bonds and call in 18 and 95 hunderths % of there bonds.

When Maud Trebilcock talked about permutations and combinations she wuzn't talkin about men in New York what take the elevated nor wuz she talkin about ministers tying knots, but say, youd be surprised what you kin do with 12 republicans and ate democrats.

Mr. Lane (that's what the program calls him) talked about Reenay Day carte. I guess it must of bin a rubber lined cart n filled with water cuz he had a hard time swimmin to shore. The fellow in Reenay Day carte new about everything from religion to mathematics.

Miss Wade did better (she didn't go so deep, just waded). Sir Isik Nooton didnt no wheather he discovered it or wheather Leidnitz did, but his friends said he did and Leidnitz had sum friends wat said he did. Rudy Erikson told us about Leidnitz. Even Leidnitz said he discovered it. Oh, yes. He discovered gravity and calculus.

Mr. Spooner told us sumthin about that calculus. I guess its short for the'll-cool-us. He took a mark like this and derived sumthin from it. I didnt see where it cum from but he got an awful lot. Then they wuz a little sin like equls but Mr. Spooner said it wuz approchin sumthin. It wuz a little mark like this = but I cudnt see that it wuz approchin' enythin.

Bill Droshe—member him?—he told us about Ballshe-veekee multiplicashun. You added sum hear and tuk somthin twice over there and left off 3 numbers in the middle and put haf or about that on the bottom and you got yor anser. Gosh! Im goin to be patriotick and stick to good American rithmitik.

Say, girls, if you wanta no how old he is ast Sarah Lowenstein. She kin even sho you how old Adam is—no, wuz—well, ast her anyway. She kin sho you.

Sandy Morrison told us about sum men what cood mul-

(Continued on page 20)



NORMAL GLEE CLUB



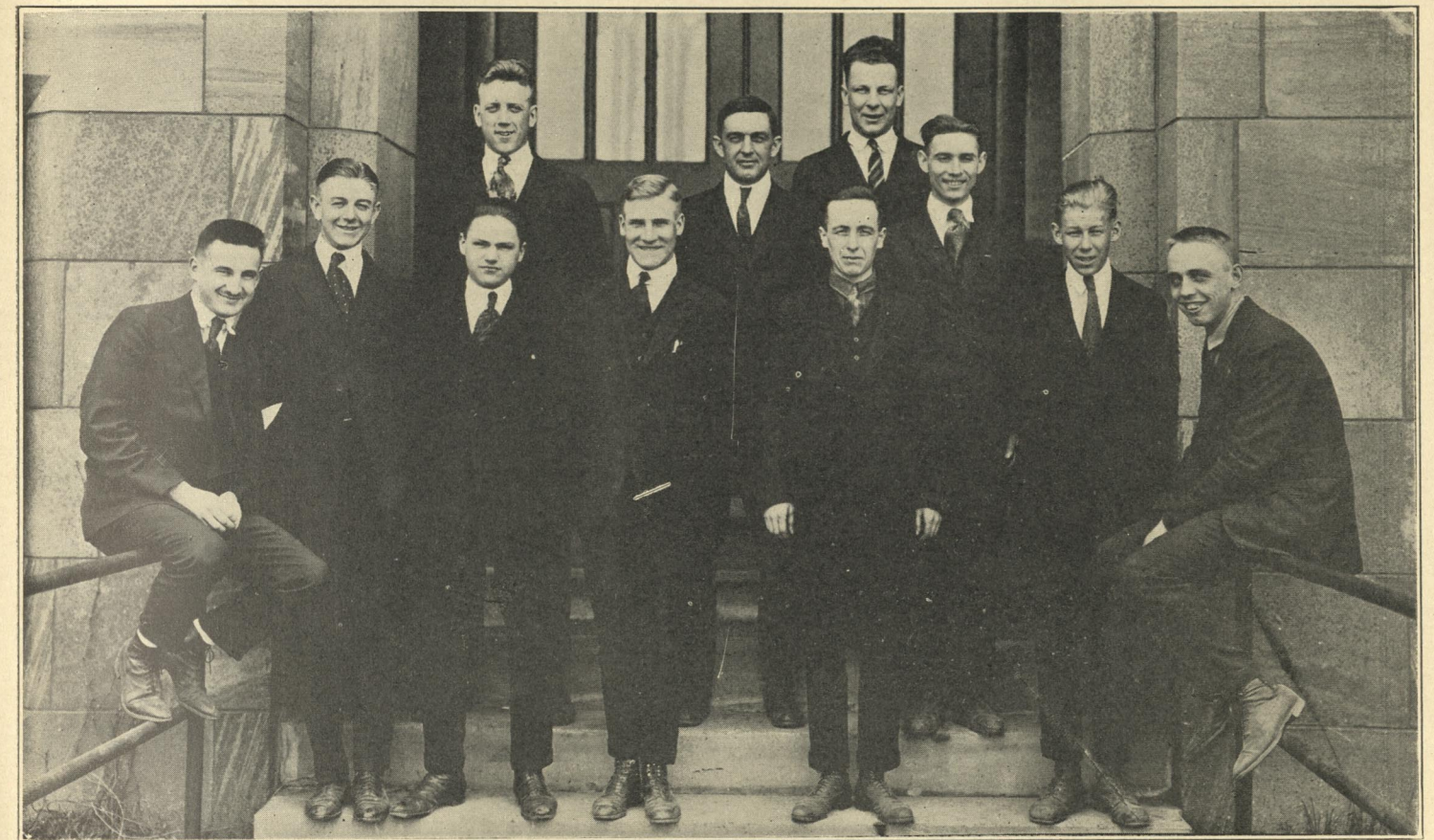


### STUDENT GIRLS' LEAGUE OFFICERS AND ADVISERS

Top Row—Doris King, Ruth Richards, Edna Rummel.  
 Bottom Row—Cora Harris, Florence Bergquist, Bernice Roberts, Olive Fox, Rose Poirrer.  
 Miss Bates and Miss Swan not in picture.

### One Student Girls' League Hike

Girls! Did you ever know that there was such a beautiful place in the vicinity of Marquette or in the world as Sugar Loaf in May? Wasn't May 31 a grand and glorious day—the best of the spring? The fates (or the weather man), were certainly with us, because just as we came to the foot of Sugar Loaf the breeze came up over the lake, and oh, how cool it was. After having dinner we went on an exploring trip to Cove Cottage to see the spring, the look-out, 'n everything. Did we groan on our trip up Sugar Loaf? Not we! Hardened hikers, every one. But Oh, the view! We could see for miles and miles out over the lake, out over the trees, and 'way past town. Down again to have supper on those rocks jutting out into the lake. Don't ask how many cups of coffee Elsema drank, or how Naomi enjoyed hers. But do this, will you? Ask Naomi and Bertha whether they'd rather walk home or have a launch ride back. We know what they'll say, but—don't you believe them.



### MANUAL ARTS CLUB

Top Row—Vero June, Mr. McClintock, Fred Anderson, Peter Kimber,  
 Bottom Row—Adolph Vanzo, Henry Deegan, Alfred Wellman, Clarence Bond,  
 Alexander Morrison, Theodore Fellman, Edwin Calm.

### Manual Arts Club

During the fall term of school all students enrolled in the manual arts department formed a club known as the Manual Arts Club. Many benefits are derived from this club. It brings all the members together so that they may know each other intimately. Both business and social meetings have been held, at which the problems that confront prospective manual training teachers were discussed. A voluptuous spread was enjoyed by the members of the club March 18. This was made possible largely through the kindness of Mrs. McClintock, who prepared the biggest part of the repast. Ed Calm, being the big leader and joke cracker, entertained all by showing the original stunt of writing the names of the members backwards on place cards. Jack Rowe, another of our chief entertainers, was very facetious with his remarks. He wanted to show how much coffee he could drink. Results: a coffee-colored shirt and collar.

We claim one honor in the school, and that is, that we believe we are the only class outside of Miss Linton's to have music while we work, and that music coming from the warbling of Fred Anderson, Hank Deegan and Theo. Fellman.

Officers, Spring Term:

President .....Ed Calm.  
 Vice President .....V. June  
 Secretary and Treasurer .....Alfred Wellman

A. E. V., E. C. C. P. B. K.





# SONS OF THOR

Back Row—C. C. Wiggins, J. E. Lautner, Clifford Swanson, D. F. Stull, Kenyon Boyer, Clarence Beaglehole, Adolph Vanzo, Vero June, Clifford Van Idersine, President J. H. Kaye. Front Row—Alexander Morrison, Walter Bracher, Wilbert Treloar, Theodore Fellman, Rudolph Larson, Julius Anderson, Douglas McIntosh, Edward Calm, Rudolph Eriksson.

With the close of the school year the Sons of Thor will also close one of the most active years in the history of the organization. This year has been marked by one of the largest and most active memberships that the order has ever had. The work of the officers in charge of the meetings and the various committees deserves a great deal of praise.



From the cut that is displayed above, an idea may be obtained of the calibre of the fellows that the order has taken into the realms and mysteries of Asgaard during the past three terms. All of the members of the order have played an important part in the activities of the school the past year and are a big asset for the Northern State Normal. If the members were not on the football or basketball squad, stimulating interest in N. S. N. in that manner, they have taken part in school productions and local plays.

The organization planned upon producing an "Hour of Fun" in the assembly room on Thursday, June 17, but owing to other things, the plans had to be changed and the Sons of Thor were unable to show to the school the talent that was lying latent in the order.

The social functions which have always been looked forward to by the members and friends have played an important part in the work this year. The "feeds" that the Sons have held in the school were such that as the "Home Ec" girls would have been proud to give to the most distinguished visitors. On Friday night, June 4, the order enjoyed a very pleasant evening at Cox's Inn, where a dance was given followed by light refreshments.





(Continued from page 14)

tiply 157 by 84—all in there heds. Wat Sandy lerned from that tho wuz how to tie yor hands loose when they are tied together by lots of knots.

One talk wuz about sliding numbers off—no!—sliding problems—no!—but, say, you girls wat got to teach rithmetick, got Ooly Anderson to show you that there rule, er ruler—er slider—he'll no wat you mean. You kin work pittener eny problem on it.

Most fun of all tho. Crook Johnson showed us a swan pan. Gee! you kin add er subtract er multiply fastern enything on it. The chinyemen kin, I men. Then you kin get as good a rattle off it Mut got off her business the other nite in the Doll Play.

Now if eny uv you folks is cumin bak nex yere you kin be in are klub to. It dont cost nuthin en maybe you kin lern lots of things or lern us lots of things. Once even Mr. Spooner sed he lerned sumthin from us so maybe you kin to.

Enyway I aint so ignerent ez I wuz, which aint sayin much—I mean lots—er—er—I well, I aint so ignerent enyway.

E. L.

### The Social Committee

The social committee started action on the Social Front early in the fall term, when General Swan got the machine guns in action by naming a social committee representing the Senior and Junior classes, the Seniors being represented by Mary Rule and Jerry Poupore, and the Juniors by Inga Anderson and Clarence Beaglehole. Miss Swan called a meeting of this committee immediately, and a chairman was elected, Clarence Beaglehole being the one chosen to serve the committee in this capacity. The duty of this committee was to arrange for social evenings—not only arrange for them, but also to help "put them over", and it sure has done its duty, for we have had some of the best social evenings in the history of the school.

The first Big Social Evening Function was the Hallowe'en party, on Oct. 31—and say, but it was great! Everyone will remember it—how can they forget? The gym looked just like witch-land; every thing looked spooky, even the dancers,—and who can ever forget that cozy corner, with the fireplace, davenport, easy chairs—and then those dreamy moonlight waltzes? It just made you feel like dancing on and on forever. Almost every one was masqued, some like clowns, some as witches. The Spainards and even the far off orient were there. The elegant, delicious, almost supernatural punch that was served over in the corner helped to put the kick in the feet of the dancers, and every one sure did kick. Thus endeth the Hallowe'en party. BUT,

Our next Big Event was the Xmas party; and say, wasn't it GREAT? Why, words can hardly describe it. And Oh! how that gym was decorated in those good old Xmas colors—Green and Red! The MUSIC was surrounded by Xmas trees and the trees were covered with tiny green and red lights,—and say, didn't that make SOME moonlight waltz, with the fireplace blazing away and those little lights on the Xmas trees lighted! Oh Boy! it just makes all who were there want to close their eyes and live it over again. The grand march, circular two-steps, robber one-steps, and those novel favor dances, just kept folks a "humpin'" all the time.

Several social evenings have been held during this spring term, and although the decorations were not as elaborate as those of the Hallowe'en and Xmas parties, they were very

successful never-the-less and helped to pile up the shekels in the social coffers.

The social evenings this year have been very successful, both financially and socially—they have been the source of the students "getting together" and they have been evenings of good wholesome amusement, characterized by the absence of "wall-flowers", because all present danced and enjoyed themselves. The spirit has been 100%. Let's keep that spirit up in our school, and may the social evenings of next year and the years to come be the most popular events in the social history of the school.

The social committee has worked hard, and have worked together, with teamwork as their motto and a good thing for others (as well as themselves) as their object—and with Inga Anderson, our diminutive little Junior member who, after Miss Swan left, kept President Kaye's trail hot asking permission to have the gym for social evenings, and Mary Rule and Jerry Poupore continually on Clarence's trail, asking him to call a meeting of the committee—all of these good times were made possible.

### The French Club

It was at the instance of Miss Blanche Noel that the members of the French classes united during the winter term to form the French Club. Jerry Poupore was elected president, Ethlyn DeHudon secretary, and Edgar Lane treasurer. The society decided that membership should be limited only by individual tastes, so that all students interested in French should be eligible. It was further decided to hold meetings in the city library.

The club had scarcely made a start when the flu epidemic put an end to the activities then under way. Miss Noel, the moving spirit of the organization, left the school to take another position, which was also very unfortunate. However, Miss Gable, her successor, in spite of the fact that her time was much taken up in the training school, has used her enthusiasm to very good advantage, in advising and encouraging the organization.

Although the club has held several interesting programs, so many other school events have interfered with its work of late that it has been found advisable to drop activities for the time. Many of the members have expressed the wish that the work may go on, so it is hoped by those who expect to return next year that a thriving club may make an early start, and carry on to completion a very successful year.

### The Men's Union

In an institution whose business it is to train people who are to train citizens for a democracy, there is always room for more democracy. With this aim as its one great purpose the Men's Union was organized during the winter term. The program of the Union was to accomplish self-government among the men, to make boys of the faculty men, and men of the student boys. Both elements have had several surprises in the discoveries they have made among those whom they thought to be their opposites, and it is the hope that with time more dignities will melt and more responsibilities develop. The hearts of all are in the right place, and we hope for God's Speed for success in future weenie-roasts, ball games, and more serious matters.

E. M. P.

### Sister College Club

Sister College Club? That sounds like something new. Well, it is new. The club has just been organized since November, but it's here to stay. That's easy to see. Any organization that can quadruple itself in six months must have something good in it. The jolly picnic suppers at the

church and the big picnic at the Island to finish up with certainly have given Methodist Normal girls some mighty good times this year. And besides—such things as we've learned about people in far-off countries, and about the girls in our Sister College Club! Here's hoping the Juniors will carry it on to bigger things next year. Come on, Seniors, give three cheers for our S. C. C.

### PHI EPSILON

Roy Brown  
Frances Rovinsky  
Frances McClary  
Olive Fox  
Bridget Shea  
Mrs. Ella Swanson  
Elizabeth Taylor  
Catherine Densmore

Anna Long  
Ellen Erickson  
Rose Poirrer  
Marguerite White  
Esther Fagerberg  
Mary Rule  
Rudolph Eriksson  
Mrs. Bertha Losinger



FOOTBALL TEAM





BOYS' BASKETBALL TEAM



SENIOR BASKETBALL TEAM

Top Row—Eugenia Quinn, Helen Beney, Gladys Treloar, Mary Lonchart,  
Winifred Uddenberg, Emilie Neugebauer, Helen Murphy.  
Bottom Row—Frances McClary, Myrtle Elliott, Agnes Wagner, Enga Hansen.



JUNIOR BASKETBALL TEAM

Top Row—Alice Garrett, Sybil Bellstrom, Hortense Hadrich, Lyle Goldsby.  
Bottom Row—Edna Rummel, Esther Niemi, Edna Johnson.

### Acknowledgment

The Senior Girls' Basketball Team wish to acknowledge the card of thanks submitted by the Juniors in the last *Normal News* and are pleased that they are so easily satisfied.



At Johnson's

221 West Crescent Street!  
 Oh boy! That's where we go to eat!  
 I'll say we do!  
 Ed Lane is always first on deck,  
 And Rose and Eva last, but Heck!  
 That's nothing new.  
 There's Ruth and Judy talking "Lowe"  
 Each morning, night, and noon, and Oh,  
 They're hard to beat!  
 The two Irenes show symptoms of  
 That dreadful malady called Love  
 They just can't eat.  
 There's Alfa with her soft grey eyes  
 And Ruth Mitchell who took a prize  
 For speaking well.  
 Then J. C. Bond, so small and thin (?)  
 It takes just Edith plus a pin  
 To make him yell.  
 We also have an Ishpeming crew  
 They're wide-awake and good sports too,  
 But shocking—quite.  
 Why, Lyda even said, "Gol darn it"  
 Which Bond soon changed into "Consarn it",  
 He's Scotch all right.  
 Then Esther quite wore out the phone  
 While Mildred could be heard to groan  
 O'er Music I.  
 Though Agnes and Goldie both agree  
 That silence is good policy,  
 They, too, love fun.  
 We never will forget that crew  
 From Johnson's boarding house, will you?  
 And all those walks?  
 Those bobbing parties, our candy pull,  
 Our slang box, which was nearly full,  
 Our friendly talks!  
 Our "All Day Sucker" treat from Lane,  
 And all the other "raising cain"  
 We did. Let's yell  
 Nine rahs for Johnson's! Let'er go!  
 Of better feeds we'll never know.  
 But now, farewell!

E. S.

At Doetsch's

The bells ring at five to twelve and there is a mad rush to the cloak room. Soon a steady stream of students pour from N. S. N. Let us follow the mob which crowds up Alger Street. As we near Doetsch's we wonder if we have struck a carnival, from the chattering and laughing from the girls on the porch and from the music and singing which is coming from the parlor. Across the street we can see, seated on the porch, Elsie, Ethel, Julia and Mae, waiting for the dinner bell to ring and incidentally waiting for the mail man. In the swing we find Louise, Sis, Pat and Beney, discussing the event of the night before. Over on the bench another group, Charlotte, Faith, Lillian, Sarah, Ruth, Alice, Doris and Winnie are talking about the new styles and gossiping in general. Seated on the lawn is Bud, trying to be heard amid all this chatter as she tells Mickey, Mary Rourke, Florence B., Hattie, Ksenia and Agnes about her exciting experience in trying to handle worms and frogs in agriculture. Then as we enter the house we find Ev pounding the piano, Fran shouting "I'm a Jazz Baby", and Marian and Bertha trying to dance to the music. In a corner, on the davenport, are Mary Rule and Viola discussing teaching. Frenchy on another couch, is taking a much needed rest and undoubtedly thinking of Jack.

Suddenly the long-awaited-for bell is rung, and with a yell everyone makes a grand rush through doors and windows, and in two seconds everyone is in her usual place. The first thing heard is the sweet voice of Eva Carlson, saying, "Please pass the pickles". Among the clamor of voices

we catch a few phrases: "Please pass the spuds"; "Hey, grab the meat"; "Who doesn't want their corn"? "Pass the crackers". Then falls a silence except for the noise of knives and forks. Suddenly the telephone rings. Of course it's for Edna Welerander. Guess who called. After the first course the plates come sliding down to the head of the table and Lil Johnson whistles for them to be removed, while Amy E. poses. As the pie is being served the usual remark is heard from Marian: "Who doesn't like pie"? After the pie has been devoured the bell sounds and there is a steady pour of satisfied girls down Alger.

L. J., M. R., L. P.

At Smith's

"Twas just before meal-time, and all of the bunch  
Rushed in with a howl to partake of their lunch.  
Some ran in from jacks, and others from ball,  
While the spooners came in from the bench in the hall.  
They came with a yell and they came with a roar,  
Each took his first helping and some piled on more.  
Gert yelled for the catsup; 'twas hurled from afar,  
Then "Grinnie" jumped up. "There goes my Bert's car!"  
"Hey, pass the carnations"! (They're onions, you know).  
"I haven't a date, so down they shall go".  
"If you give me your corn you can have my pie",  
Cried "Chicken" Larson, as the dish she did spy.  
"Oh David, my David", called Elvie in scorn,  
"Come, show us your dimples; don't look so forlorn".  
"Be careful there, Martha, don't aim quite so high—".  
(A bun almost landed in Ina's stern eye).  
Mrs. Zerbel was shocked and got up with a glare,  
While Pastie began humming "The Vacant Chair".  
"A secret again between Bunney and Nance—  
They're going to bunch class, you can see at a glance".  
And such are the memories we'll cherish for years,  
All these are things that will shape our careers.

## Maloney's Alphabet

A is for Alice, a girl dark and tall,  
She's good in athletics, especially basketball.  
B is for Brooks, sisters so kind,  
When you see one you have the other in mind.  
C is for Carol, a dear little vamp,  
But now on her doorstep none but Leo may camp.  
D is for Douglas, so manly and bold,  
Much like a miser he's in love with his Gold.  
E is for Ed. We oft make him blush  
By reminding him of the Junior Class rush.  
F is for Florence, whose hair is like gold,  
Her music a charm for all of us holds.  
G is for Gertie, so tiny and sweet;  
She doesn't walk far, 'cause she lives cross the street.  
H is for Helen. Of friends she has a bevy,  
And I've been told "she's not quite so heavy".  
I is for eyes, many kinds you recall;  
Althea's so large would make any man fall.  
J is for Jerry; our soldier was he;  
A girl here attracts him more than those in Paree.  
K is for Krellwitz, a bobbed haired lass,  
Who is specializing in kindergarten class.  
L is for Lyle and Marcella her chum;  
When they are together they sure make things hum.  
M is for Mary—Held her last name,  
And we are all certain she'll one day gain fame.  
N is for Neugebauer—Emilie, you know.  
She never needs to lack for a beau.  
O is for Judith, who is round like this letter,  
P is for Peggy, so full of pep,  
Brach has to go some to keep in step.  
Q is for Quinlan and her room-mate Maybelle,  
And you all know that we like them well.  
R is for Rowe, a pedagogue he,  
And with us very soon he will be.  
S is for Sarah, a girl slim and tall,  
And allow me to tell you she can play basketball.  
T is for Thomas; she once lost her voice—  
But let me explain, it wasn't by choice.





U is for us, the Maloney crew;  
There isn't much that we can't do.  
V is for Vanzo, who is raising a zip.  
Girls, if you can't find it, look on his lip.

W is for winsome. Mathilda is that;  
She's welcome wherever she hangs up her hat.  
X, Y and Z are for us three:  
There's Adele and Billy and Rosemary.



HOME ECONOMICS CLASSES

The following directory of N. S. N. S. alumni includes all the specializing students in the Home Economics department since the time of its establishment. In some cases the information is rather meager, and in others we have no data whatever. If any one can supply the missing information, it will be gratefully received by the Home Economics department or the alumni editor.

- 1912 Caven, Katharine, '12.  
(Marquette).  
Domestic science assistant, High school, Marquette, Michigan.  
Married to K. G. McKiernan.  
Address: 4024 Washington Boulevard, Chicago, Ill.
- McCormick, Mathilde E., '12.  
(Marquette).  
Domestic science, Hancock, Michigan, 1916.  
Domestic science, Livingston, Montana, 1919.  
Address: 118 North Yellowstone Avenue, Livingston, Montana.
- Miller, Agnes E., '12.  
(Elkhart, Indiana).  
Domestic science, Tacoma, Washington.  
Address: Unknown.
- Moutrie, Gertrude A., '12.  
(Ishpeming).  
Domestic science, Gwinn, 1912.  
Address: Gwinn, Michigan.
- Richardson, Viola, '12.  
(Marquette).  
Domestic science, Painesdale, Michigan.  
Married to Frank Martin, December 28, 1915.  
Address: Petoskey, Michigan.

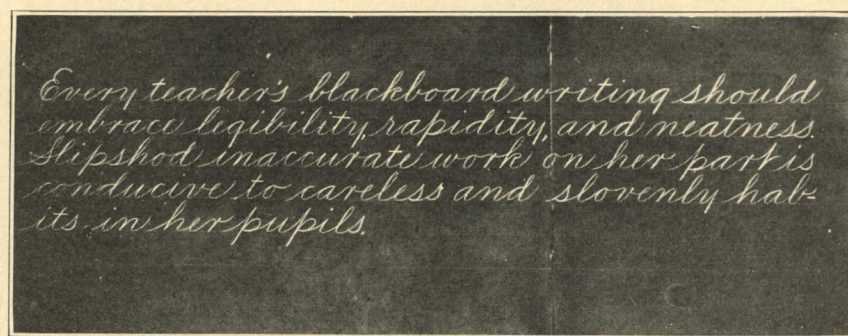
- 1913 Bush, Irene, '13.  
(Marquette).  
Domestic science assistant, High school, Marquette, 1913-18.  
Married to Daniel O'Neil, June 18, 1918.  
Address: Ewen, Michigan.
- Farrington, Clara, '13.  
(Marquette).  
Taught grade schools, 1913-15.  
Married George L. Colby, April 29, 1915.  
Address: Orchard Lake, New York.
- Handford, Hazel, '13.  
(Marquette).  
Domestic science, High school, Marquette, 1913-winter, 1920.  
Married to Theodore Dawson, May 22, 1918.  
Address: Markham Flats, Marquette, Michigan.
- Holley, Mary, '13.  
(Marquette).  
Domestic science, Cathedral School, Orlando, Florida.  
Domestic science, Virginia, Minnesota.  
Address: Virginia, Minnesota.
- Kraft, Jane May, '13.  
(Marquette).  
Taught in public schools, Bessemer.  
Married to Joseph W. Pecard, May 13, 1918.  
Daughter, born June 17, 1919.  
Address: Bessemer, Michigan.



COMMERCIAL LAW CLASS

Top Row—Clifford Van Iderstine, Buell Doelle, Rudolph Eriksson, Abraham Fleury, C. C. Wiggins.  
Bottom Row—Leslie Sorenson, Florence Hardes, Mildred Thomas, Florence Erickson, Helen Malmgren.





## COMMERCIAL DEPARTMENT

Much has been accomplished in the Commercial Department of our Normal School. Among the most important phases of the work done during the last few weeks were the special speed tests given to the students who have completed the assigned work for this term.

The following students have been granted certificates for having attained a speed of twenty-five or more words per minute: Agnes M. Wagner, 29.3 words; Ethel Price, 28.5, and Alfa Larson, 25.2. Work is still being carried on and more certificates will be granted before the close of the term.

The typewriting students have also been aiding various other departments in the school, especially the Biological and the Psychological Departments.

Commercial work is becoming more and more popular with each term. The students are so enthusiastic about their work that they have even come out on Saturday mornings from 8:00 to 12:00. There is always one grand rush—as "First come, first served".

Besides gaining speed and accuracy, we get excellent practice in expressing our feelings. Before enrolling for this course you may consult the following in order to get a few necessary pointers: Just ask "Bud" why she puts a

"?" after her name instead of a "." Is it because her name is so short or did she strike the wrong key? When all is quiet, the silence is disturbed when Evelyn says, "Oh! sure, a mistake on the last word of my exercise. Well, I'm not going to do it over; Florence will know whose it is even though I did sign Karl". Some girls can relate some very exciting instances. If you are interested, you may refer to Emily Neugebauer. Ask Hazel Brown how many sheets of paper she wasted on the fourteenth lesson. Any one interested in a speedy stenographer, apply to Hortense Hadrich. When asked how many lessons Clarence Bond has credit for he will meekly reply, "Oh, I—I have been working on this all day and I'm not any further ahead than when I started". Ask Alfa Larson how many times she refers to the cards to see how many hours she has worked. You know, she's such a speedy worker, Florence can't punch her card fast enough.

So take the advice of those that have had experience and take some course in this department, both for work and for a good time, as both Penmanship and Typewriting will be offered during the ensuing summer term. You will never regret any time spent, knowledge gained or paper wasted in the Commercial Department of our dear Normal School.

## Home Economics Alumni Directory

(Continued from page 26)

Love, Mary V., '13 (Deceased).  
(Marquette).

Assistant, Home Economics Department, N. S. N. S., Marquette, 1913-1916.  
Student Emerson School of Oratory, Boston, Mass., 1916.

Married to Ralph R. Eldredge, Marquette, June 14, 1917.

Son, Arch Bishop Eldredge, born, January, 1919.  
Mrs. Eldredge died January 28, 1919.

McCurdy, Mabel, '13.  
(Houghton).

Taught in grades, Houghton, Michigan, 1913-14.  
Domestic science, Ely, Minnesota, 1914-16.  
Married to William Trezona, July, 1916.  
Address: Ely, Minnesota.

Rydholm, Selma, '13.  
(Marquette).

Domestic science, Agricultural School, Tapiola, Michigan, 1913-14.  
Student Michigan Agricultural College, East Lansing, and University of Minnesota, Minneapolis, 1914-1915.

Domestic science, Mt. Hope, Wisconsin, 1915-17.  
Assistant, N. S. N. S. Library, Marquette, 1917-18.  
Home Economics department, N. S. N. S., Marquette, Fall term, 1918.

Domestic science, Davenport, Iowa, January, 1919.  
Address: 127 East Locust Street, Davenport, Iowa.

1914 Johnson, Evelyn E., '14.  
(Marquette).

Taught in grades, Stambaugh, 1914-17.  
Domestic science, Republic, 1917-19.  
Domestic science, Ontonagon, 1 month, 1919.  
Teaching in public schools, Flint, 1919.  
Address: Flint, Michigan.

Kimball, Marguerite, '14.  
(Marquette).

Married to Perry Hatch, Marquette, September 9, 1914.  
A son, Charles Kimball, February, 1916.  
A daughter, Mary Lorraine, June, 1917.  
Address: 336 East Crescent Street, Marquette, Michigan.

Mullaly, Marie, '14.  
(Marquette).

Taught public school work in Marquette county, 1914-17.  
Married to William C. Schenk, Detroit, January, 15, 1918.

A son, William Carl, October, 1918.  
Address: 565 Colin Avenue, Detroit, Michigan.

Murray, Florence, '14.  
(St. Ignace).

Taught public school work, Houghton, 1914-18.

Taught in public schools, Akron, Ohio, 1918-19.  
Teaching in public schools, Detroit, 1919-  
Address: 102 Belmont Street, Detroit, Michigan.

Olsen, Hedvig K., '14.  
(Marquette).

Domestic science, Gladstone, Michigan, 1914-18.  
Married to Arthur O. Engstrom, December 26, 1918.

Address: Racine, Wisconsin.

O'Neill, Helen Florence, '14.  
(Hancock).

Taught in public schools, Baraga, Michigan, 1914-15.

Taught in Medford, Wisconsin, 1915-16.  
Address: Unknown.

Trathen, Ruby, '14.  
(Negaunee).

Taught at Eagle Mills, Marquette County, 1914-15.

Assistant, Negaunee Public Library.  
Teaching in public schools, Negaunee, 1918-  
Address: Negaunee, Michigan.

1915 Allison, Mrs. Irene, '15.  
(Onarga, Indiana).

Practices domestic science at home.  
Address: Terrace Park, Evansville, Indiana.

Anderson, Elsie I., '15.  
(Marquette).

Taught in public schools, Republic, 1915-17.  
Teaching in public schools, Detroit, 1917-  
Address: 1090 Mt. Elliott, Detroit, Michigan.

Bergstrom, Emmy, '15.  
(Gladstone).

Domestic science, Marenisco, 1915-18.  
Domestic science, Gladstone, 1918-  
Address: Gladstone, Michigan.

Gustafson, Abbie, '15.  
(Marquette).

Taught public school work, Lakeview, 1915-16.  
Now at home.  
Address: 904 North Fourth Street, Marquette, Michigan.

Jacobson, Emma, '15.  
(Marquette).

Taught in Marquette County schools, 1915-19.  
Married to Louis J. Olson, Marquette, September 30, 1919.  
Address: 310 Harrison Street, Marquette, Michigan.

Johnson, Maidie, '15.  
(Marquette).

Taught in public schools, Vulcan, 1915-18.  
Teaching in St. Paul, Minnesota, 1918-  
Address: 645 Central Park Place, St. Paul, Minnesota.

Mathews, Marjorie, '15.  
(Marquette).

Student, University of Chicago, 1916-18.  
Ph. B. degree, University of Chicago, June, 1918.  
Domestic science, High school, Kalamazoo, 1918-  
Address: 101 West Dutton Street, Kalamazoo, Michigan.

Olson, Anna A., '15.  
(Bessemer).

Domestic science, High school, Bessemer, 1915-18.  
Student, University of Chicago, summer terms and year 1918-19.  
Ph. B. degree, University of Chicago, August, 1919.

Head of Home Economics department, DePauw University, 1919-  
Address: DePauw University, Greencastle, Indiana.

Van Kerckhove, Irene, '15.  
(Norway).

Taught in public schools, Newberry, 1915-16.  
Taught in public schools, Norway, 1916-  
Address: Unknown.

1916 Barrett, Grace, '16.  
(Gladstone).

Married to William J. Mottle, Gladstone.  
A daughter, born July, 1919.  
Address: Gladstone, Michigan.

Bell, Mildred M., '16.  
(Marquette).

Taught public school work, Redridge, Houghton County, 1916-18.

Teaching, Junior High school, Munising, 1918-  
Married to Henry Loper, Jackson, December 13, 1919.

Address: Munising, Michigan. (After August 1, 1920, Jackson, Michigan).

Brazeau, Ruth, '16.  
Information wanted.

Fassbender, Clara, '16.  
(Marquette).

Taught in public schools, Newberry, 1916-17.  
Married to Langan Foard, Marquette, March 4, 1917.

A daughter, Clara Elizabeth, born December, 1919.

Address: Marquette, Michigan.

Gustafson, Esther, '16.  
(Norway).

Information wanted.

Hager, Marion L., '16.  
(Marquette).

Assistant, Home Economics department, N. S. N. S., Marquette, 1916-17.  
Married to Carl O. Rydholm, Marquette, August 16, 1917.

A daughter, Marion Edith, born August 16, 1918.  
Address: 3356 De Sota Avenue, Cleveland, Ohio.

Harris, Mabel, '16.  
(Gladstone).

Head of Home Economics department, Jamestown College, Jamestown, North Dakota, 1918-  
Address: Jamestown College, Jamestown, North Dakota.

Johnston, Grace, '16.  
(Marquette).

Clerical work in Marquette.  
Married to Frank Denny, Marquette, September 20, 1919.  
Address: Elizabeth Apartments, Marquette, Michigan.

Lowenstein, Bertha, '16.  
(Negaunee).

At home since graduation.  
Address: Negaunee, Michigan.

McCallum, Mary, '16.  
(Calumet).

Taught in public schools, Laurium, 1916-  
Teaching in public schools, Calumet, Michigan.  
Address: 228 Rockland Street, Calumet, Michigan.

Olsen, Olga, '16.  
(Marquette).

Taught in public schools, Iron River, 1916-19.  
Teaching in Ironwood, 1919-  
Address: Ironwood, Michigan.

Paulson, Alma, '16.  
(Marquette).

Domestic science, Hancock, 1916-  
Address: Hancock, Michigan.

Premo, Mildred, '16.  
(Amasa).

Domestic science, Amasa, 1918-  
Address: Amasa, Michigan.

St. Jean, Ida, '16.  
(Norway).

Taught in public schools, Iron River, 1916-19.  
Teaching in public schools, Detroit, 1919-  
Address: 43 Medbury Avenue, Detroit, Michigan.

Stratton, Leona, '16.  
(Baraga).

Taught in public schools, Newberry, 1916-19.  
Teaching in public schools, Iron Mountain, 1919-  
Address: 501 West B. Street, Iron Mountain, Michigan.



Trevillion, Myrl, '16.  
(Marquette).  
Taught in public schools, Stambaugh, 1915-16.  
Assistant, Home Economics department, N. S. N. S., Marquette, 1916-18.  
Married to Clayton P. Frei, Marquette, October 9, 1919.  
Address: East Prospect Street, Marquette, Michigan.

1917 Artz, Margaret, '17.  
(Marquette).  
Assistant, N. S. N. S. library, Marquette, 1917.  
Teaching in public schools, Bessemer, 1917-  
Address: Bessemer, Michigan.

Blomgren, Tillie, '17.  
(Norway).  
Departmental work, Public schools, Norway, 1917-  
Address: Norway, Michigan.

Coughlin, Mary, '17.  
(Hancock).  
Teaching in public schools, Houghton, 1917-  
Address: 726 Water Street, Hancock, Michigan.

Frechette, Celeste, '17.  
(Bark River).  
Married to F. H. Nolden, Bark River.  
A daughter, Frances Elizabeth, born February, 1920.  
Address: Bark River, Michigan.

Harrington, Germaine, '17.  
(Ishpeming).  
Domestic science, Winona, 1918-19.  
Domestic science, High school, Bessemer, 1919-  
Address: Bessemer, Michigan.

Johnson, Florence, '17.  
(Marquette).  
Domestic science, Agricultural school, Tapiola, 1917-  
Address: Otter Lake Agricultural School, Tapiola, Michigan.



Kaye, Mildred, '17.  
(Home Economics, '19).  
(Marquette).  
Taught in private kindergarten, Marquette, 1917-18.  
Student, N. S. N. S., Marquette, Home Economics department, 1918-19.  
Domestic science assistant, High school, Marquette, 1919-  
Address: 629 High Street, Marquette, Michigan.

McCall, Grace, '17.  
(Marquette).  
Clerical work, Marquette Red Cross Shop.  
Address: 140 West Prospect Street, Marquette, Michigan.

MacIver, Mamie, '17.  
(Grand Marais).  
Taught in public schools, Grand Marais, 1917-18.  
Married to Willard R. Small, Grand Marais, December 20, 1918.  
Address: Grand Marais, Michigan.

McKie, Mabel, '17.  
(Bessemer).  
Information wanted.

Peterson, S. Elizabeth, '17.  
(Marquette).  
Clerical work, Marquette.  
Address: 328 West Crescent Street, Marquette, Michigan.

Phelps, Emily F., '17.  
(Marquette).  
Married to Clarence B. Randall, Ishpeming, August 18, 1917.  
A daughter, Mary Fitch, born, August, 1918.  
Address: 706 North Main Street, Ishpeming, Michigan.

Prince, Eva, '17.  
(Lake Linden).  
Taught public school work, Isle Royale school, 1917-18.  
Teaching public school work, Houghton, 1918-  
Address: 181 Ruby Street, Houghton, Michigan.

Siefert, Irene, '17.  
(Houghton).  
Teaching in public schools, Houghton, 1917-  
Address: 215 Albion Street, Houghton, Michigan.

Stanchina, Albena, '17.  
(Norway).  
Teaching in public schools, Norway, 1917-  
Address: Norway, Michigan.

Williams, Viola, '17.  
(Negaunee).  
Domestic science, High school, Negaunee, 1917-  
Address: Negaunee, Michigan.

1918 Bergstrom, Minna, '18.  
(Gladstone).  
Domestic science, Marinesco, 1918-  
Address: Marinesco, Michigan.

Campbell, Bessie A., '18.  
(Avoca).  
Teaching public school work, Avoca, 1918-  
Address: Avoca, Michigan.

Jackson, Maria E., '18.  
(Ishpeming).  
Teaching public school work, Eben, 1918-  
Address: Ishpeming, Michigan.

McNulty, Eloysia, '18.  
(Marquette).  
Teaching in public schools, Newberry, 1918-  
Address: Newberry, Michigan.

Nedeau, Lillian, '18.  
(Calumet).  
Teaching in public schools, Chassell, 1918-  
Address: Chassell, Michigan.

Peterson, Martha M. C., '18.  
(Ironwood).  
Teaching in public schools, Ironwood, 1918-  
Address: Ironwood, Michigan.

Rashleigh, Marion E., '18.  
(Houghton).  
Taught in public schools, Hancock, 1918-19.  
Domestic science, Winneconne, Wisconsin, 1919-  
Address: Winneconne, Wisconsin.

Stireman, Myrtis, '18.  
(Menominee).  
Taught in public schools, Vulcan, 1918-19.  
Address: Unknown.

Webber, Tressa, '18.  
(Iron Mountain).  
Taught in public schools, Amasa, 1918.  
Address: Unknown.

1919 Gormley, Kathleen, '19.  
(Newberry).  
Teaching in public schools, Newberry, 1919-  
Address: Newberry, Michigan.

Gray, Marion, '19.  
(Houghton).  
Married to Douglas Vivian, Houghton, September 3, 1919.  
Address: Salem, Ohio.

Keese, Gertrude, '19.  
(Ishpeming).  
Domestic science, Vulcan, 1919-20.  
Address: Ishpeming, Michigan.

Kruse, Helen, '19.  
(Ishpeming).  
Studying nursing in Ann Arbor, 1919-  
Address: Ann Arbor Hospital, Ann Arbor, Michigan.

Ratz, Marguerite, '19.  
(South Range).  
Taught in public schools, Loretto, 1919-20.  
Address: South Range, Michigan.

Schneider, Edna, '19.  
(Saginaw).  
Assistant, Home Economics department, N. S. N. S., Marquette, 1919-  
Address: 150 West Ridge Street, Marquette, Michigan.

Stanchina, Olive, '19.  
(Norway).  
Taught in public schools, Gwinn, 1919-20.  
Address: Norway, Michigan.

Treado, Edyth, '19.  
(Michigamme).  
Taught in public schools, Newberry, 1919-20.  
Married to Walter Wolfe, Newberry, March 17, 1920.  
Address: Newberry, Michigan.

Wyatt, Ruth, '19.  
(Iron Mountain).  
Teaching in public schools, Ironwood, 1919-  
Address: 110 W. B Street, Iron Mountain.

THE NORTHERN NORMAL NEWS

VOL. II No. 9

Published Every Month except  
August and September  
BY THE  
NORTHERN STATE NORMAL SCHOOL  
MARQUETTE, MICHIGAN.

Entered as Second Class Matter at Marquette, Michigan, in November, 1914, under the Act of March 3, 1873.

Price, \$1.00 a year, fifteen cents a single copy.

Editor ..... DORIS KING  
Managing Editor.....W. B. McCLINTOCK  
Alumni Editor.....LYDIA M. OLSON  
Business Manager.....C. C. WIGGINS  
Student Editors.....NANCY BLACKNEY  
DOUGLAS McINTOSH

Assistant Business Managers:  
L. O. GANT.....Local Papers  
F. R. COPPER.....Mailing List

JUNE 21, 1920

JAS. PICKANDS  
& CO.  
(LIMITED)

COAL

Wholesale Retail

MARQUETTE  
ISHPEMING  
NEGAUNEE



## GEORGE ROUMAN

Cor. Hewitt Ave. and Third St.

DELICIOUS ICE CREAM  
FINE CANDIES

NORMAL SCHOOL SUPPLIES

Phone 57-M

## EMBLAGAARD DAIRY

PURE DAIRY PRODUCTS

FROM

HOLSTEIN COWS

Phone 20-F1

## A Savings Account Fills the Gap Between Ambition and Achievement.



SAVINGS BANK BUILDING  
Owned by  
Marquette County Savings Bank.

Deposits made on or  
before the 5th of the  
month draw interest  
from the 1st of the  
month.

3% Interest  
Paid On  
Savings Deposits

## THE MARQUETTE COUNTY SAVINGS BANK

Marquette, Michigan.

SPECIAL ATTENTION TO BANKING BY MAIL.

## GOITER

Goiter is not only unsightly, but disagreeable—it has a tendency to make one nervous, irritable, short of breath, etc.

DESJARDINS'  
GOITER REMEDY  
UNGOITROID

IS A SUCCESS

Cures in the most simple manner, externally, by absorption.

After UNGOITROID has reduced a goiter it stays down.

PRICE, \$2.00 POSTPAID.

Get it from your druggist.

DESJARDINS' PHARMACY  
Manufacturers

417 N. Third. Marquette, Mich.  
School Supplies a Specialty.



## J. L. WALTON

MERCHANT TAILORING AND  
MEN'S FURNISHING.

JUST A HINT! Look before you  
buy, and you may be \$ \$ ahead.  
TRY ME!

123 W. Washington Street.

## ELKS TEMPLE SPORTING GOODS STORE.

A. C. RICHARDS, Prop.

ATHLETIC GOODS

GUNS, AMMUNITION  
and FISHING TACKLE

Pocket Cutlery, Flashlights and  
Batteries, Skates, Snow Shoes,  
Skiis and Sleds.

WE HAVE THE GOODS AND WE  
WANT YOUR TRADE.

"Say It With Flowers"

Phone 1034.

## E. R. TAUCH

Florist

1015 N. Third St.  
MARQUETTE, MICH.

## MARQUETTE BUSINESS COLLEGE

Day and Night Sessions

OUR GRADUATES GET THE "PICK" OF POSITIONS.

### 6534 Western Reference Teachers Wanted.

During 1918-19 we received official requests from employers in forty-three States and four foreign countries for 6,534 teachers for Schools and Colleges from Kindergarten to University. OUR EIGHTH YEAR OF RECOMMENDING ONLY WHEN ASKED TO DO SO BY EMPLOYERS DIRECT. This is why OUR MEMBERS are usually chosen. They are wanted. No enrollment fee necessary. If you want a position with the Progressive Employers who depend upon our Professional Service for teachers you must use the same service they use.

The Western Reference & Bond Ass'n

382 Journal Building, Kansas City, Mo.

### FOR THAT CAMPING PARTY

As Well for Every  
Other Day's Supply

OF

Staple and Fancy  
GROCERIES

GO TO

RYDHOLMBROS.

Phone 438.

### Guelff Printing Co.

Upper Peninsula  
Office Supply Co.

EVERYTHING IN PRINTING AND  
OFFICE SUPPLIES.

NORMAL SUPPLIES.

### M. M. STIERLE

Ground Floor  
Studio

SPECIAL ATTENTION GIVEN  
TO NORMAL WORK.

508 NORTH FRONT STREET

Phone 57-W.

NORMAL  
PRICES  
ALWAYS

### A. E. ARCHAMBEAU

Clothier and Furnisher

### CONKLIN'S

Jewelry and Music House  
WATCHES, RINGS, SCARF PINS

CLASS PINS—Medals—Prize Cups—  
Holiday, Anniversary and  
Graduating Gifts.

Repairing of Fine Watches a  
Specialty.

Talking Machines, Violins, Mando-  
lins, Guitars, Banjos.  
PIANOS—Sheet Music.

Stock the Largest, Goods the Finest  
and Prices the Lowest

AT CONKLIN'S.

After School  
you will thoroughly enjoy  
Refreshments.

Follow the crowd to the most pop-  
ular Ice Cream Parlor in the city.

Special Dainty Lunches Served as  
Only Donckers Knows How.

"It's the Talk of the Town"

Donckers'

Next to Delft Theater.

## THE BON TON SODA SHOP

South Front Street

Extend you an invitation to make  
their store your headquarters while  
down town.

We serve delicious Ice Cream  
and Ices; also Hot Drinks and  
Dainty Lunches.

Ice Cream in Bulk and Punch for  
Parties at Moderate Prices.

CALL AT THE

## CITY ELECTRIC SHOP

FOR YOUR

PORTABLE  
LAMPS,  
HEATERS,  
TOASTERS,  
CURLING  
IRONS,  
VIBRATORS,  
GRILLS,  
IRONS,  
CHAFING  
DISHES,



SEWING MACHINES,  
PERCOLATORS, ETC.

DEPT. OF  
LIGHT & POWER

## E. J. SINK

PLUMBING  
AND  
HEATING

Heating Engineer

MARQUETTE, MICH.  
Telephone 257.

"Normal students are cordially invited to call at our office for any information they may require regarding the conduct of a checking account, or any other subject pertaining to commercial banking. Our officers will cheerfully give them such time as they may need for discussion of such subjects, whether by appointment or otherwise, and we urge all who are studying this general topic to obtain in our office an insight into practical methods to supplement their study of theory."

## MARQUETTE NATIONAL BANK.



Velvet Ice Cream  
Soft Drinks  
Normal Supplies

**LA BONTE'S**

Cor. Third and Prospect Sts.  
Phone 220-M.

CALL UP

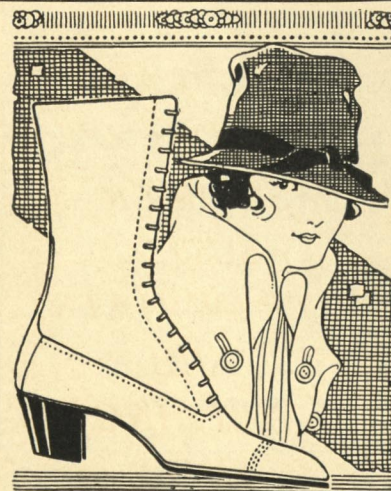
**SMITH'S  
GROCERY**

All Good Things To Eat.

Fancy Groceries,  
Fruits and Vegetables.  
Oysters, Fish,  
Milwaukee Sausage.

Phones 28 and 29.

Werner Block, Front St.



There are three requirements that you should bear in mind when buying shoes—Style, workmanship and material.

You will receive all these when buying at the

**WASHINGTON  
SHOE STORE**

Marquette's Exclusive Shoe House.

**WHENEVER  
YOU SEE... CANDYLAND**

— THINK OF —

Dainty Home-Made Maple Brazil and Delicious  
Maraschino Cherry Chocolates,  
Pecan Nut Rolls, Fruit Nougat Bon-Bons.  
Hot Drinks and Dainty Lunches.

**"Meet Me At Candyland"** Opera House Block.

**DELFT  
THEATRES INC.**

OPERATING

**OPERA HOUSE and DELFT THEATRE**

**ROAD ATTRACTIONS—  
VAUDEVILLE—PICTURES**

Artercraft Paramount  
Metro-Fox Select  
Arbuckle and Sennett Comedies  
QUALITY PROGRAMS

**SMART SHOES**

IN COMMON VALUES  
REASONS WHY YOU SHOULD  
BUY SHOES FROM US:

- 1—The largest stock of Women's and Children's Footwear in this section.
- 2—All Shoes properly fitted before leaving our store.
- 3—Our Foot Comfort Department always at your service with expert advice.
- 4—Greater volume of sales, hence better Shoes at lower prices.

**GETZ'S** MARQUETTE  
MICHIGAN

**FRED LIZOTTE**

DEALER IN

Stationery,  
Cigars, Tobaccos and  
Choice Candies.  
School Supplies and  
Groceries.

Ice Cream, Hot Drinks.

501 North Third Street  
MARQUETTE, MICH.

Phone 406-W

36TH YEAR.

**THE DAILY  
MINING JOURNAL**

THE FIRST  
THE LARGEST  
THE BEST

A Newspaper for Discriminating  
Readers and Advertisers.

**COAL**

LACKAWANNA ANTHRACITE

HAZARD SOOTLESS

ELKHORN, "The Ashless Coal"

WEST. VIRGINIA SPLINT

YOUGHIOGHENY STEAM

POCAHONTAS SMOKELESS

LILLY SMITHING

Clean Coal  
Prompt Deliveries

Telephone 117

**F. B. SPEAR & SONS**

MARQUETTE, MICH.

Telephone 81

**ALPHONSE  
PETERS**

Florist

Designer for Private and Wedding  
Parties

Growers of Choice Cut Flowers  
and Plants

Flower and Garden Seeds  
Also Bulbs

Office and Greenhouse:  
Cor. Third and Magnetic Sts.

**Simpura & Laine**

N. THIRD STREET

Electrical  
Shoe Repair Shop

**STUDENTS**— All men who study—insure in the

**NORTHWESTERN**

Because Northwestern Policies are the Best

**P. G. TEEPLE, Gen'l Agent**

Marquette Nat'l Bank Bldg.

Marquette, Mich.

**J. H. FOSTER CO.**  
Department Store

Reliable Merchandise at  
Lowest Spot Cash Prices.

WE GIVE GREEN  
TRADING STAMPS

Mail Orders Solicited

OPERA HOUSE BLOCK.

N.  
S.  
N.

Class Pins  
Fobs  
Souvenir  
Spoons  
Pennants  
AT

**SCHOCH &  
HALLAM'S.**

**FRANK  
LA BONTE**

Headquarters for

**Fancy Groceries**

Phone 573.

800 N. Third. Marquette, Mich.

**LEMON'S  
STUDIO**

WE GIVE

**SPECIAL PRICES AND SPECIAL  
ATTENTION TO NORMAL  
STUDENTS.**

**E. C. LEMON**

Harlow Block.

**Dry Block Hardwood**

BY THE CORD

**POCAHONTAS COAL**

FRESH FROM THE MINES

PHONE US YOUR WANTS

**CONSOLIDATED FUEL & LUMBER COMPANY**

IF IN NEED OF

**Furniture, Rugs,  
Draperies, Linoleum**

At Rock Bottom Prices,  
Sold for Cash or Credit,

SEE

**TONELLA & SON**

307-309 S. Front St.

FIRST and LAST!

**The Economy Store**

Is Always at Your Service With  
Choice Candies  
Fruits and Vegetables  
Fancy and Staple Groceries  
Choice Meats

**WM. H. CHUBB  
& SON**

1100 N. Third St. Phones 31 & 32.

**DISPLAY  
OF  
SUMMER  
SUITS,  
STRAW HATS  
AND  
BATHING  
SUITS  
NOW  
COMPLETE**

**Stern & Field**  
SUCCESSORS TO  
ORMSBEE & ATKINS



# NORTHERN STATE NORMAL SCHOOL

MARQUETTE, MICHIGAN

## SUMMER SCHOOL



## June 28-Aug. 6, 1920

### COURSES OF INSTRUCTION

Agriculture  
Biology  
Chemistry  
Course of Study  
Drawing  
Education  
Expression  
French  
Geography  
History  
Household Arts  
Latin

Opportunity for observation and practice teaching offered in the training school.  
Series of general lectures and entertainments by prominent people.  
Excursions to places of special interest.  
Marquette is an ideal place for summer study.  
Opportunities for outdoor sports; rowing, boating and hikes.

**Write for Summer Bulletin.**

DORIS I. BOWRON,  
Secretary.

JAMES H. KAYE,  
President.

### COURSES OF INSTRUCTIONS

Library Methods  
Manual Training  
Mathematics  
Music  
Observation  
Penmanship  
Physics  
Physical Education  
Practice Teaching  
Psychology  
Sociology  
Typewriting

## A COURSE IN THRIFT.

Daily classes open to all Normal School Students. No entrance examinations required.

Matriculation fee \$1.00, which will be returned to you on demand plus interest at 3%.

This practical and profitable course qualifies for prominence in any walk of life—in any trade or profession.

Register today by opening a savings account with the First National Bank of Marquette.

## The First National Bank

MARQUETTE, MICHIGAN.

DESIGNATED UNITED STATES DEPOSITARY.

Capital, Surplus and Undivided Profits, \$300,000



=====  
Mining Journal  
Print Shop  
=====