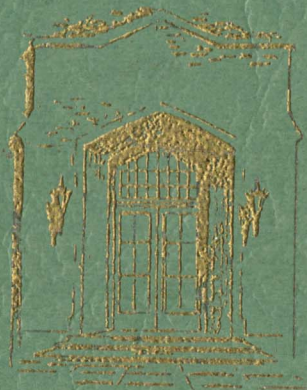


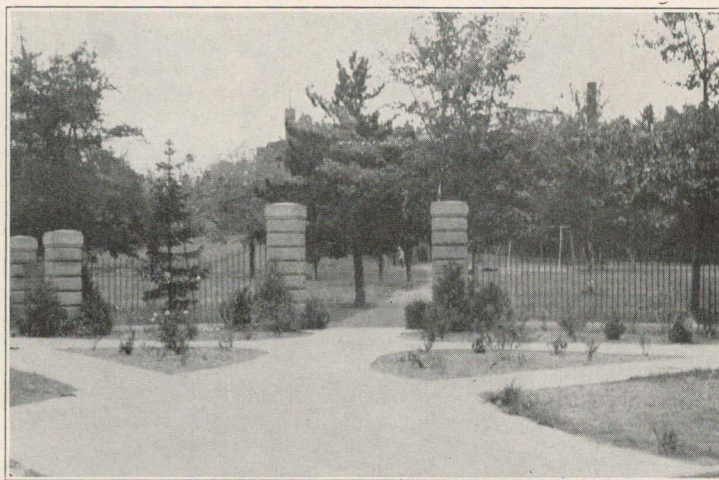
*Elizabeth Millevard*

# CLASS DAY

1937



NORTHERN STATE TEACHERS COLLEGE



### Class Week

Class Day Program.....	Monday, June 14
Auditorium, 9:50	
Senior Picnic.....	Monday, June 14
Tourist Grounds, 4:00 P. M.	
Faculty Reception.....	Friday, June 18
Foyer, 8:30 P. M.	
Baccalaureate.....	Sunday, June 20
Auditorium, 3:00 P. M.	
Graduation Exercises.....	Monday, June 21
Auditorium, 10:00 A. M.	



## Class Day Program

### SENIOR CIRCUS

1. Feats of Strength  
Professor Cummings
2. Dance Moderne  
Wayne Nelimark and the Lady in Red
3. The Wonder Horse as presented by Prof. Konwinski
4. Farewell Address by director for past season  
Bob Laurie

5. Modern Rhythm.  
Bucky Loncharte
6. Animal Act  
Madame Notari
7. Juggle Dance  
Steve "Born to Dance" Baltic

---

## Class Week Committees

### Class Day Booklet

Robert Laurie, Editor  
Lawrence Worth, Associate Editor      Grace Hanner, Business Manager  
Mary Jane Johnson

### Class Day Program

Jack Hubbard, Chairman  
Robert Lampi, Music      Floyd Wallace, Properties  
Joseph Miheve, Publicity      Winifred Wimmer, Costumes  
Jane Neveaux, Helen Notari, Steve Baltic, Joseph Strielman,  
Jean Winn, Grace Hanner

### Senior Picnic

Eino Grekla, General Chairman  
Elsie Teppo, Refreshments      Roy Brigman, Transportation  
Alvin Cummings, Games      Anthony Loncharte, Singing  
Joseph Konvinski, Joseph Strielman

### Caps and Gowns

Eero Wiitala, Chairman  
Elizabeth Millward, Roy Brigman, Esther Kumpulainen



### Baccalaureate Service

Sunday, June 20, 1937, 3:00 P. M.

March—Pomp and Circumstance.....Elgar  
 "Pilgrim's Chorus".....Tschaikowsky-Cross

#### Quartette

Myron Johnson                      Walter Brotherton  
 Robert Lampi                        William Wright

#### Invocation

Dean John G. Carlton, St. Paul's Cathedral  
 "Faith, Hope, and Love".....Shelley

#### Sextette

Frances Layne                        Wilhelmina Schober  
 Florence Shutey                      Clara Karas  
 Elizabeth Hosking                    Hazel Elson

Address, "A New Frontier"

President Webster H. Pearce

#### Benediction

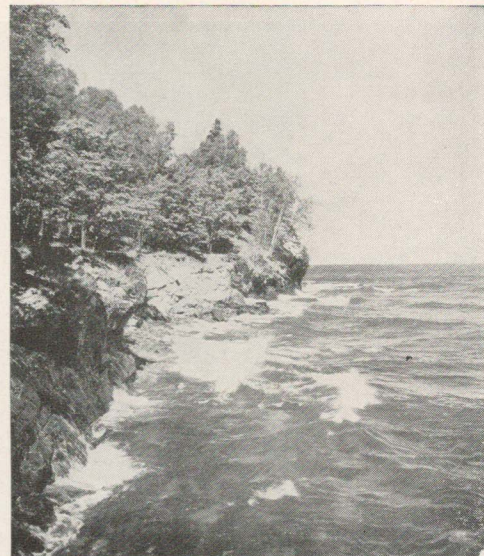
Dean John G. Carlton

Mystery of waters, never  
 slumbering sea!

Impassioned orator, with lips  
 sublime,

Whose waves are arguments  
 to prove a God.

—R. Montgomery.



### Graduation Exercises

March—Pomp and Circumstance..... Elgar

#### Invocation

Rev. Sidney M. Smith,  
 First Baptist Church

"The Morning Wind".....Branscombe

Ruth Craig, Contralto  
 Genevieve Sedlock Anderson, Accompanist

Address....."Teachers for the Modern Age"

Wynand Wichers  
 President of Hope College, Holland, Michigan.

"The Valley of Dreams".....Fletcher

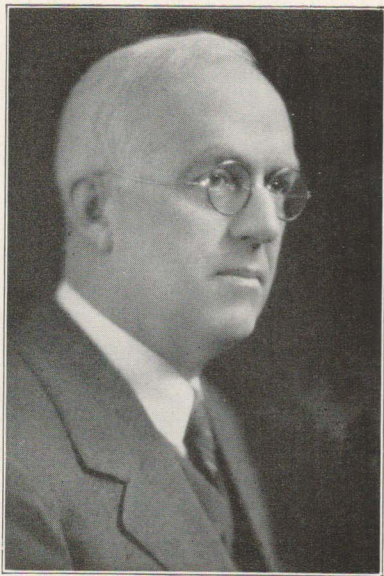
#### Sextette

Frances Layne                        Wilhelmina Schober  
 Florence Shutey                      Clara Karas  
 Elizabeth Hosking                    Hazel Elson

Conferring of Degrees and Granting of Certificates

#### Benediction

Rev. Sidney M. Smith, First Baptist Church

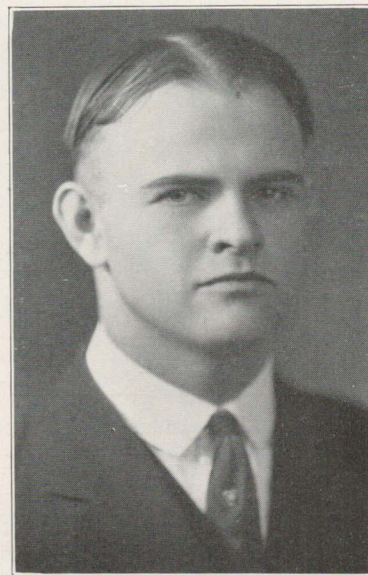


WEBSTER H. PEARCE, A. M., M. Ed., LL. D.

After four years under the administration of President Pearce, we, as seniors, are ready to say that we are grateful for his guidance.

Under his administration, we have seen the spirit of cooperation grow between the student body and the faculty until it has reached a new high peak at Northern. His intimate chats with students, the freedom existing during those chats, and his democratic attitude at all times, will be long remembered.

To him we wish continued health and strength as he continues to work for the best interests of the school. The best interests are always nearest and dearest to his heart.

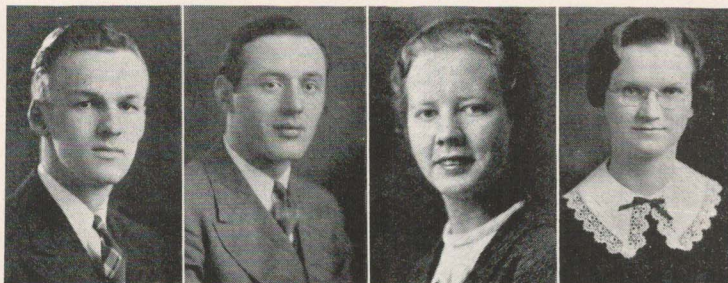


CHARLES S. CLUCAS, B. S., A. M., Ph. D.

One of the much needed members in class organization is a good adviser. We have had such an adviser in Charles S. Clucas.

His decisions have always been carefully weighed so that his advice is always sound judgment. The management of a class is no easy task, the adjustment of student records involve a great deal of patience and understanding. Such has been the job of our adviser.

We can compensate him only in one way and that is by living up to the records that we have made in school. As he expects much from us, so we also wish continued joy and happiness to him.



**Class Officers**

**President:**  
 Robert Laurie ..... Marquette

**Vice-President:**  
 Stephen Baltic ..... Wakefield

**Secretary:**  
 Elsie Teppo ..... Wakefield

**Treasurer:**  
 Grace Hanner ..... Hubbell

**Seniors**

**ROBERT ANDERSON, Marquette** **A. B. Degree Geography**  
 Northern News Staff, Editor '35; Band '32-'33-'34; Phi Epsilon, Kappa Delta Pi; Intercollegiate Debate '35; Haynes Debating Club '35.

**PHILIP BAHRMAN, Marquette** **B. S. Industrial Arts**  
 Alpha Delta Fraternity; Industrial Arts Club.

**STEPHEN BALTIC, Wakefield** **A. B. History**  
 Football '35-'36; Basketball '35-'36-'37; Junior Class President, Vice-President of Men's Union '36-'37; Tri Mu Fraternity, Secretary '35, Vice-President '36, Business Manager '37; Drama Club '37; Phy. Ed. Club '37; Newman Club '37; College News Staff '36-'37; Vice-President Senior Class.

**GEORGE BARR, Marquette** **B. S. Industrial Arts**  
 Industrial Arts Club; Junior Prom Committee '36.

**SIGNILD BENSON, Ishpeming** **B. S. Art**  
 French Club '36-'37; E. T. C. '36-'37.

**ROY BRIGMAN, Marquette** **B. S. Phy. Ed.**  
 Phy. Ed. Club '33-'37; Tri Mu Fraternity; Basketball '33-'37; Track '33-'37; Football '33-'37; Secretary Sophomore Class.

**WALTER BROTHERTON, Negaunee** **B. S. Music**  
 Newman Club President '35-'36; Band '33-'37; Orchestra '33-'37; Glee Club '33-'37; Men's Octette '34-'37; Junior Class Play '36.

**PALMER BROWN, Ishpeming** **B. S. Mathematics**  
 Mathematics Club, Vice-President '36-'37; Drama Club '37.

**RALPH BROWN, Marquette** **B. S. Commerce**

**LETIZIA CARDONE, Wakefield** **A. B. Geography**  
 Phi Kappa Nu Sorority, Kindergarten Club '33-'37; Sophomore Prom; Invitation Committee '35; Junior Prom Invitation Committee '36; Newman Club, Vice-President '36.

**ALVIN CUMMINGS, Crystal Falls** **A. B. History**  
 Tri Mu Fraternity; Football '33-'35; Frosh Coach '34; Basketball '33-'34; Baseball '34; Track '34-'37; Mathematics Club; Phy. Ed. Club; Senior Picnic Committee '37.

**DONALD DUSH, Marquette** **B. S. Industrial Arts**  
 Industrial Arts Club.

**DORIS EADE, Ramsay** **A. B. History**  
 Transferred from Ironwood Junior College '34.

**MARGARET ETHIER, Hubbell** **B. S. Chemistry**  
 Transferred from St. Scholastica, Duluth. Forum; Newman Club; Delta Sigma Nu Sorority.

**MELLO FISH, L'Anse** **A. B. Geography**  
 Tri Mu Fraternity; Freshman Football '33; Basketball '33-'35; Track '33-'35-'37; Baseball '34; Newman Club; Phy. Ed. Club.

**WILFRED FISH, Marquette** **B. S. Industrial Arts**  
 Industrial Arts Club.

**CONSTANCE FLANIGAN, Marquette** **A. B. English**  
 Kindergarten Club; Newman Club; E. T. C.

**ELIZABETH GENSIVER, Marquette** **B. S. Commerce**  
 Commercial Club; Cegmer Seg Sorority; Junior Class Play '36.

1937 **Class Day** 1937

- EDWARD GLEASON, Negaunee** **B. S. Industrial Arts**  
Industrial Arts Club '34-'36; Football '34-'36; Basketball '34-'36; Basketball, Captain '36-'37; Football Captain '36.
- RAYMOND GRAVELLE, Rapid River** **A. B. History**  
Baseball '34; Newman Club.
- EINO GREKELA, Hibbing, Minnesota** **B. S. Industrial Arts**  
Theta Omicron Rho President '36-'37; Manual Arts Club; Senior Picnic Committee '37.
- LEMPI HAKALA, Wakefield** **B. S. Commerce**  
Commercial Club; Lutheran Students League.
- GRACE RUTH HANNER, Hubbell** **A. B. Chemistry**  
Class Vice President, 1934-5; Treasurer, 1935-6; Delta Sigma Nu; Treasurer, 1935; Vice President, 1936; Student Girl's Council, 1934-5; Vice President, 1935; Phi Epsilon, 1934-35-36; President, 1936; Kappa Delta Pi; Intercollegiate Debate, 1934; Forum, 1933-34-35; Senior Class Day Committee.
- FORD ALLWIN HASKINS, Merriweather** **A. B. History**  
Band; Glee Club; Chorus; Octet; Tri Mu Fraternity.
- ALDEN CHARLES HOFFMAN, Bessemer** **A. B. History**  
Alpha Delta Fraternity; Basketball; Football.
- FLORENCE H. HOKANSON, Hancock** **A. B. English**  
Gamma Phi Alpha; Corresponding Secretary 1936-37.
- ELIZABETH E. HOSKING, Calumet** **A. B. English**  
Delta Sigma Nu; Glee Club; Forum; Drama Club; French Club; Kindergarten Club; Intercollegiate Debate; Junior Class Play; Student Girl's Council, 1934; Commencement Sextette; Phi Epsilon; Kappa Delta Pi.
- LINDA HEIKKINEN, Chassell** **A. B. English**  
Lutheran Students Association, 1935-36; Minerva Debating Society, 1935-36; Secretary, 1936.
- BERNADIEN HANSEN, Marquette** **B. S. History**  
French Club; Kindergarten Club; Attended Jefferson City Junior College in Missouri; Delta Chi Alpha sorority; Historical Society.
- GEORGE HILL, Hancock** **B. S. Music**  
Band; Orchestra.
- LOUIS HILL, Negaunee** **B. S. History**  
River Falls State Teachers College; Basketball.

1937 **Class Day** 1937

- JACK K. HUBBARD, Marquette** **A. B. English**  
Alpha Delta; Football, 1933-34-35; Drama Club; Junior Play; Chairman of Senior Class Day Program; Executive Committee of Men's Union, 1936-37.
- GEORGE HYRY, Champion** **A. B. History**  
News Staff, 1934-35-36; Math Club, 1934-35-36; Lutheran Students' Association; Commercial Club, 1936; Basketball, 1934; Tennis and Track, 1936-37.
- HELEN M. JALONEN, Ironwood** **A. B. English**  
Ironwood Junior College; Kindergarten Club; Kappa Delta Pi; French Club, 1936; Chorus, 1936; Lutheran Students' Association, 1936-37.
- HELEN JARVI, Calumet** **A. B. French**  
Chorus, 1935-36; Lutheran Student's Association; French Club, 1935-36.
- MYRON R. JOHNSON, Marquette** **A. B. Chemistry**  
Band, 1933-35; Orchestra; Chorus; Men's Glee Club; Men's Discussion Group, 1936; College News, 1936; Kappa Delta Pi, 1936.
- MARTHA S. JOHNSON** **B. S. Music**  
Chorus, Orchestra, Girls' Glee, 1936-37.
- MARY JANE JOHNSON, Negaunee** **B. S. Commercial and Geography**  
Phi Kappa Nu Sorority; Commercial Club; Secretary, 1937; Class Day Booklet Staff, 1937.
- PAULINE JOHNSON, Marquette** **A. B. Intermediate**  
Commercial Club.
- LORRAINE JOHNSON, Ishpeming** **A. B. Early Elementary**
- TYYNE M. KAUPPILA, Ishpeming** **B. S. Art**  
Kindergarten Club, 1935-36-37; E. T. C. 1935-36-37; Vice President 1936-37; Phi Epsilon; Kappa Delta Pi.
- ORISSA W. KEESE, Ishpeming** **B. S. Art**  
Cegmer Seg; Prom Committee; Phi Epsilon; Kappa Delta Phi, Vice-President, 1936-38; Executive Committee; Student Girl's League, 1933-34.
- JOSEPH R. KONWINSKI, Iron River** **A. B. Geography**  
Theta Omicron Rho; Track, 1935-36; Senior Picnic Committee.
- SAIMA E. KUIVILA, Negaunee** **A. B. Mathematics**  
Math Club; French Club; Lutheran Student's Association; College Chorus.
- ESTHER K. KUMPULAINEN, Marquette** **A. B. History**  
News Staff; Mixed Chorus; Phi Epsilon; Kappa Delta Pi.
- ROBERT O. LAMPI, Calumet** **B. S. Music**  
Band; Orchestra; Chorus; Men's Glee Club, 1933-37; Men's Octette, 1934-37; Alpha Delta Fraternity; Senior Class Day Program Committee.

## THE CLASS OF 1937



Robert Anderson, Philip Bahrman, Stephen Baltic, George Barr, Signild Benson, Roy Brigman, Walter Brotherton, Palmer Brown, Ralph Brown, Letizia Cardone, Alvin Cummings, Donald Dush, Doris Eade, Margaret Ethier, Mello Fish, Wilfred Fish, Constance Flanigan, Elizabeth Gensiver, Edward Gleason, Raymond Gravelle, Eino Grekela, Lempi Hakala, Grace Ruth Hanner, Ford Allwin Haskins, Alden Charles Hoffman, Florence H. Hokanson, Elizabeth E. Hosking, Linda Heikkinen, Bernadien Hansen, George Hill, Louis Hill, Jack K. Hubbard, George Hyry, Helen M. Jalonen, Helen Jarvi, Myron R. Johnson, Martha S. Johnson, Mary Jane Johnson, Pauline Johnson, Lorraine Johnson, Tyyne M. Kauppila, Orissa W. Keese, Joseph R. Konwinski, Saima E. Kuivila, Esther K. Kumpulainen, Robert O. Lampi, Robert E. Laurie, Margaret Larson, Frank J. Lepins, Anthony Loncharte, Eino J. Luoma,

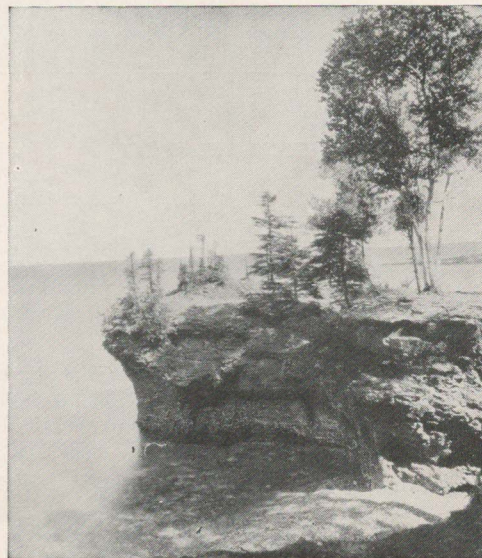
Gertrude M. Maki, Tyyne M. Maki, Orvo A. Maki, Cyrilda Matthews, Norman E. McLean, Elizabeth G. Millward, Joseph V. Miheve, Waino A. Nelimark, Jane R. Neveaux, Lillian Niemela, Sylvia W. Niemi, Helen Notari, Edward A. Outinen, Boris Paaajanen, Suoma Paju, Bertha V. Palo, Denette M. Paulson, Hubert W. Pippo, Howard A. Richards, Edward J. Saunders, Amy H. Saunders, Leona A. Saunders, Keating Schaffer, Wilhelmina A. Schober, Edna Schrandt, Toivo H. Sello, Joseph R. Strieleman, Miriam S. Tassava, Elsie H. Teppo, Grace A. Turvey, Rosalie A. Vandandaigne, Catherine Voelker, Anna Waltanen, Mary V. Watson, Floyd E. Wallace, Charles A. Wells, Ruth I. Wearne, Verl Wills, Winifred Wimmer, Jean M. Winn, Eero Wiitala, Lawrence Worth.

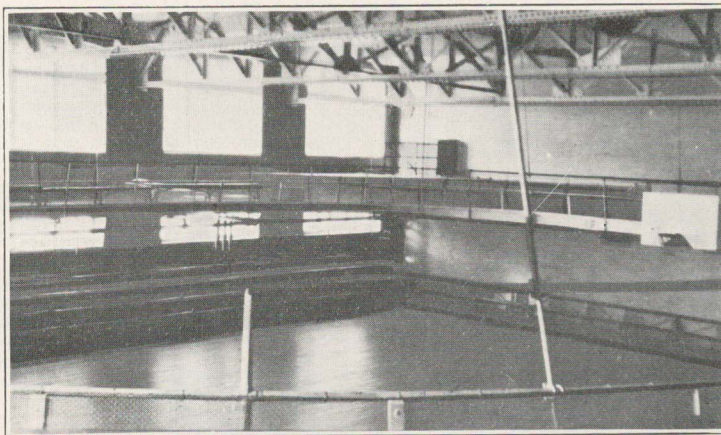
- MARGARET LARSON, Marquette** **A. B. Intermediate**  
Delta Sigma Nu
- ROBERT E. LAURIE, Marquette** **A. B. Degree, Jr. and Sr. High**  
Alpha Delta Fraternity; News Staff, 1934-36; Sports Editor, 1935-36; Editor of Summer Edition, 1934; Track, 1935-36; Band, 1934-37; Men's Glee Club, 1934-36; Men's Octette, 1936; Chorus, 1935-37; Chairman of Sophomore Prom Reception Committee; Chairman Junior Prom Decoration Committee; Secretary-Treasurer Men's Union Executive Committee, 1936-37; Chairman Sophomore Float Committee, 1935; Men's Discussion Club, 1937; Editor of Senior Class Day Booklet, 1937; Senior Class President, 1936-37.
- FRANK J. LEPINS, Ingalls** **B. S. Chemistry**  
Math Club.
- ANTHONY LONCHARTE, Bessemer** **A. B. Geography**  
Orchestra; Band; Glee Club; Octette; Tri Mu Fraternity; President, 1937; Chorus; Newman Club; Track; Football; Commercial Club; Senior Picnic Committee.
- EINO J. LUOMA, Eben** **A. B. Mathematics**  
Track, 1935-36; Baseball, 1925; Math Club; President, 1936; Kappa Delta Pi; Treasurer, 1936; Phi Epsilon; Treasurer, 1936; Lutheran Student's Association; News Staff.
- GERTRUDE M. MAKI** **A. B. Junior and Senior High**  
Minervan Debating Society; Lutheran Students' Association.
- TYYNE M. MAKI, Ironwood** **A. B. English**  
Kindergarten Club; Chorus; Lutheran Student's Association.
- ORVO A. MAKI, Marquette** **B. S. Industrial Arts**  
Industrial Arts Club; Track; News Staff; Lutheran League; Phi Epsilon; Kappa Delta Pi.
- CYRILDA MATTHEWS, Calumet** **B. S. English**  
Chorus; Girl's Glee Club; Kindergarten Club.
- NORMAN E. McLEAN, Marquette** **A. B. English**  
Debate; Math Club; French Club; Drama Club; Men's Discussion Club; Junior Class Play.
- ELIZABETH G. MILLWARD, Marquette** **A. B. History**  
Delta Sigma Nu; Drama Club; Junior Class Play; Senior Caps and Gowns Committee.
- JOSEPH V. MIHEVE, Wakefield** **B. S. Industrial Arts**  
Tri Mu Fraternity; Industrial Arts Club; Prom Committee; Scouting, 1933-35; Senior Class Day Program Committee.
- WAINO A. NELMARK, Ironwood** **B. S. Phy. Ed.**  
Tri Mu; Discussion Group; Drama Club.

- JANE R. NEVEAUX, Gladstone** **B. S. Biology**  
Forum Debating Society, 1933-34-35; French Club, 1933; Math Club, 1934-35; Prom Committee; Cegmer Seg Sorority; Treasurer, 1934; President, 1935-36; Student Girls League Council, 1936; Senior Class Day Program Committee.
- LILLIAN NIEMELA, Ishpeming** **A. B. Latin**  
French Club, 1934-37; Math Club, 1935-36.
- SYLVIA W. NIEMI, Hancock** **A. B. English**  
Chorus, 1935-36; Lutheran Student's Association; Vice President, 1936-37.
- HELEN NOTARI, Iron River** **A. B. Jr. and Sr. High**  
Gamma Phi Alpha, 1936-37; Northern News; Drama Club; Senior Class Day Program Committee.
- EDWARD A. OUTINEN, Trimountain** **B. S. Commerce**  
Band; Orchestra; Glee Club; Chorus; Commercial Club; Lutheran Student's Association.
- BORIS PAAJANEN, Marquette** **B. S. Geography**  
Tri Mu fraternity.
- SUOMA PAJU, Rockland** **A. B. English**  
Phi Epsilon; Kappa Delta Pi; Kindergarten Club, 1935-36; Secretary 1936; Lutheran Student's Association; Secretary, 1936; Minervan Debating Society.
- BERTHA V. PALO, Iron River** **B. S. Commerce**  
Commercial Club; Delta Sigma Nu; Kappa Delta Pi; Phi Epsilon.
- DENETE M. PAULSON, Ishpeming** **A. B. Early Elementary**  
Cegmer Seg Sorority; Treasurer, 1936-37; Kappa Delta Pi; Historian-Reporter; French Club, 1933-35; Kindergarten Club, 1936-37; Prom Reception Committee, 1936.
- HUBERT W. PIPPO, Houghton** **B. S. Industrial Arts**  
Industrial Arts Club.
- HOWARD A. RICHARDS, Marquette** **A. B. Chemistry**  
Math Club, 1933-36; Kappa Delta Pi, 1935-36.
- EDWARD J. SAUNDERS, Marquette** **B. S. Industrial Arts**  
Industrial Arts Club.
- AMY H. SAUNDERS, Marquette** **A. B. Intermediate**  
Phy. Ed. Club, 1933-35; Kindergarten Club.
- LEONA A. SAUNDERS, Menominee** **B. S. Commerce**  
Commercial Club; Secretary, 1934; Vice President, 1935; President, 1936-37; Tau Pi Nu; Treasurer, 1935-36; President, 1937; Student Girl's League; 1933-34; Freshman Class Treasurer; Math Club, 1936; Lutheran Student's Association.

- KEATING SCHAFFER, Ishpeming** **A. B. English**  
Tri Mu; Vice President, 1934; President, 1935; News Staff, 1935; Prom Committee; Junior Play; Secretary of Junior Class; Newman Club.
- WILHELMINA A. SCHOBERT, Ontonagon** **A. B. English**  
College of Saint Scholastica, Duluth, Minn.; Girl's Glee Club; Chorus; Minervan Debating Society; News Staff; Newman Club.
- EDNA SCHRANDT, Marquette** **A. B. English**  
E. T. C.
- TOIVO H. SEILO, Marquette** **B. S. Commerce**  
Junior Play; Commercial Club; Vice President, 1937; Lutheran Student's Association; Drama Club, 1935-37; News Staff, 1935-37.
- JOSEPH R. STRIELEMAN, Marquette** **A. B. History**  
Theta Omicron Rho; Football, 1933-34; Newman Club; Senior Class Day Program Committee; Senior Picnic Committee.
- MIRIAM S. TASSAVA, Ironwood** **A. B. History**  
Kindergarten Club; Lutheran Student's Association; Chorus.
- ELSIE H. TEPPU, Wakefield** **B. S. Home Economics**  
Delta Sigma Nu; Phi Epsilon; Secretary, 1936; Kappa Delta Pi; Secretary, 1936; Lutheran Students' Association; President, 1936; Secretary of Senior Class; Student Girls Executive Council, 1935; Senior Picnic Committee.
- GRACE A. TURVEY, Houghton** **B. S. Home Economics**  
Beta Omega Tau; Girl's Glee Club; Home Economics Club; Chorus, 1936.
- ROSALIE A. VANDANDAIGNE, Iron Mountain** **B. S. Geography**  
Tau Pi Nu Sorority; Newman Club; Drama Club; Kindergarten Club; Treasurer.
- CATHERINE VOELKER, Ishpeming** **A. B. History**  
Minervans; Mixed Chorus; Girls' Basketball.
- ANNA WALTANEN, Calumet** **A. B. Intermediate**  
Lutheran Student's League.
- MARY V. WATSON, Gladstone** **B. S. Biology**  
Cegmer Seg Sorority; Corresponding Secretary, 1934; Treasurer, 1935; Forum Debating Society.
- FLOYD E. WALLACE, Marquette** **B. S. Industrial Arts**  
Freshman Football; Industrial Arts Club; Band; Orchestra; Chorus; Glee Club; Senior Class Day Program Committee.
- RUTH I. WEARNE, Ishpeming** **B. S. History**  
Cegmer Seg Sorority; Commercial Club.
- CHARLES A. WELLS, Ralph** **B. S. Mathematics**  
Math Club; Secretary-Treasurer, 1936; French Club; 1933; Debate, 1936.

- VERL WILLS, Palmer** **B. S. Biology**  
Freshman Football; Basketball; Track; Phy. Ed. Club, 1933; French Club, 1934.
- WINIFRED WIMMER, Houghton** **B. S. Home Economics**  
Delta Sigma Nu.
- JEAN M. WINN, Ironwood** **A. B. English**  
Transfer from Ironwood Junior College; Beta Omega Tau; Secretary, 1936; Girls' Glee Club; Newman Club; Secretary, 1936-37; Chorus; Junior Prom Decoration Committee.
- EERO WHITALA, Marquette** **B. S. Physical Education**  
Football, 1933-36; Basketball, 1934-37; Track, 1934-37; Band, 1934-36; Orchestra; Sophomore President; Phy. Ed. Club; President, 1936; Chairman of Senior Caps and Gowns Committee.
- LAWRENCE WORTH, Negaunee** **A. B. English**  
Webster Debate Club, 1932; Intercollegiate Debate, 1934-37; Tri Mu, 1935-37; Corresponding Secretary, 1936-37; Junior Class Play; Drama Club, 1935-37; Men's Discussion Group, 1936-37; Class Basketball, 1934; Senior Class Booklet Committee.





## Class History

YEAR 1933-34

### September—

- 18—Freshman Day. Webster H. Pearce begins first full year as President.
- 19—Enrollment Day. What courses shall we choose?
- 22—Faculty Reception. We enjoy our first Social evening.

### October—

- 2—Pasties! Men's Union in College Gym.
- 7—Football—Ypsi...24; N. S. T. C.—0.
- 13—Unlucky again. M. C. M.—27; N. S. T. C.—0.
- 18—Class Election. Robert McKerrol, President; Stephen Bergman, Vice-President; Patrick Bennet, Secretary; Leona Saunders, Treasurer.
- 28—Tech—7; Northern—0.

### November—

- 1—Statistics of Class: Finns 57; English 41; Swedes 27; also a few others.
- 14—Frats and Sororities announce 83 pledges.
- 24—Soph Prom attracts many Frosh.

- 29—Thanksgiving Holiday. Dr. Blackburn announces his resignation. He becomes an Episcopal clergyman.

### December—

- 4—We come back to school after consuming ever so much turkey.
- 10—Many Frosh appear in their first Yule-tide concert.
- 11-13—Oh! Our first exams.
- 13—Home to welcome Santa Claus.

### January 1934—

- 2—Winter term begins—18 Frosh make Fall Honor Roll.
- 16—Bob Laurie—first Frosh member of the News Staff.
- 25—Basketball: Varsity 39; Tech 19 and Frosh 25; Tech Frosh 19.
- 26—Northern 44; Jordan 21.

### February—

- 8—Did you go to the Junior Prom?
- 9—Negaunee Miners top Frosh 25-23.
- 16—Tech 30—Northern 23. Northern Frosh 26—Tech Frosh 22.
- 23—N. S. T. C. 62—Ironwood Junior College 24.
- 25—Assembly—Shakespearean Guild. Did you like Romeo and Juliet?

### March—

- 5—Northern and Tech split in Debate Fracas.
- 14—Frosh star in Phy. Ed. Demonstration.
- 17—Grace Hanner and Mary Watson debate Ypsi. Tough Luck, girls.
- 23—Winter Term ends.

### April—

- 2—Spring Term begins.
- 6—Segs elect Cannibal Queen.
- 12 Theta Minstrels—Steve Bergman directing.
- 17—Hurst named as chief grid coach.
- 26—Augustana Choir is well received.

### May—

- 2—Girls' Glee Club presents Spring Concert.
- 10—Men's Union Banquet.
- 12—Track meet: Tech 62—Northern 35.
- 22—Annual band tour. Seven Frosh: Doug Syverson, Clare Wells, Robert Lampi, Paul Lirette, Myron Johnson, Ahti Tuuri, and Don Mellin are in the band which plays under Director Conway Peters for the last time.

### June—

- 1—Rush Day. Frosh 171½—Sophs 146½. Do we celebrate at the Rush Dance?
- 7—Junior Play—"Death Takes a Holiday".
- 18—Commencement. Farewell, Seniors—Good-bye Frosh!

## YEAR 1934-35

**September—**

- 18—Another year! Boy, are we big?
- 21—Football—Superior 48 and N. S. T. C. O.
- 25—Hello Gang—it's pasty time again!
- 29—Oshkosh—26; Northern—13.

**October—**

- 2—Drama Club inaugurated.
- 13—Tech—0; Northern—6. Good Work, Wiitala; Nice going, Hoffman and Gleason.
- 15—Dr. Ralph Sackman addresses Assembly.
- 20—Northern—21; Northland—7.
- 31—Class Election: Eero Wiitala, President; Grace Hanner, Vice-President; Roy Brigman, Secretary; Leona Saunders, Treasurer.

**November—**

- 3—In Memoriam: Alfred M. Barry—Custodian Emeritus.
- 14—Alumnus Thoren begins drilling Pierce Basketball Squad.
- 19—Varsity Football Awards to Wiitala, Hoffman, W. Fish, Ahti Tuuri, and Dutch Cummings.
- 27—Thanksgiving again!

**December—**

- 3—School once more!
- 9—Christmas Cantata.
- 10-13—What? Exams!
- 13—Home for the holidays.

**January 1935—**

- 7—A Happy New Year! Did you make the Honor Roll? Professor of Agriculture—George Butler; Dean of Women—Irene Morris.
- 19—Basketball: Tech—15; Northern—43. Gleason, Brigman, Baltic, Wiitala, and Hoffman all star.
- 20—Northern—37; Jordan—22.

**February—**

- 6—Laurie becomes "News" Sport Editor.
- 18—Russian Chorus entertains.
- 19—Varsity leaves for down-state trip.
- 23—Wayne wins as Northern closes season: 36-31. We total 17 wins and 4 losses.

**March—**

- 1—Costumed Male invades Co-ed Party.
- 3—Girl Debaters return home with 5 victories and 3 defeats.
- 15—Northern presents Scholarships to U. P. Debaters for first time.

- 20—Kappa Delta Pi—Northern's first National Honorary Fraternity.
- 29—Winter Term ends!

**April—**

- 8—Spring Term begins.
- 12—Alpha Deltas frolic in "Second Childhood."
- 15—Assembly: Little Philharmonic Orchestra.
- 24—Dr. Williams announces Band Tour.
- 30—Men's Banquet.

**May—**

- 1—May Day but no May pole.
- 8—Birls' Glee Club Concert.
- 11—Track: Northern 61½—Tech 57½.
- 16—Girls' Banquet. Can those girls eat?
- 29—Lillian Erickson, Grace Hanner, Orissa Keese, Esther Kumpailainen, Eino Luoma, Howard Richards and Elsie Teppo are honored by Phi Epsilon.

**June—**

- 7—Rush Day. Sophs 58—Frosh 260. No, we're not happy!
- 12—Junior Play: "The Copperhead."
- 14—Phi Epsilon Dinner.
- 21—Another year ends!!

## YEAR 1935-36

**September—**

- 24—Registration. Upper Classmen.
- 28—Lookee! Northern—2; Ypsi—0. Co-Captain—Hoffman.

**October—**

- 3—Owah—Oshkosh—20; Northern—0.
- 10—News introduces new faculty members: Miss Hamilton, Miss Doig, Miss Phelps.
- 10—George Hyry and Esther Kumpailainen joins News Staff.
- 24—Munday Jubilee Octette; Women's Get-together.
- 25-26—Homecoming Dance and Football: Tech—18; Northern—0.

**November—**

- 6—Class Election: Steve Baltic, President; Fred Braastad, Vice-President; Keating Schaeffer, Secretary; Grace Hanner, Treasurer.
- 11—Armistice Program.
- 20—Basketball Schedule is announced.
- 24—Gleason, Hubbard, Hoffman, and Fish receive Football awards.

**December—**

- 6—Soph Ball!
- 9—Chicago Civic String Quartette—Assembly.
- 15—Annual Christmas Concert.

18—Fall Term ends.

**January 1936—**

- 7—Back to the grind again.
- 10—Basketball: Northern—47; Northland—23.
- 11—Northern—26; Ironwood—27.
- 16—Chief Eagle Plume—Indian lecture.
- 24—Alpha Delta House closes.

**February—**

- 5—Motif for Junior Prom announced.
- 11-16—Down-state Debate trip. All non-decision debates.
- 19—The Sterlings—Black Magic.
- 21—Junior Prom—we'll never forget it!
- 24—Assembly—The Romancers.
- 29—Basketball Season ends—Northern—57; St. Norberts—32.

**March—**

- 9—Women Debate Tech. Elizabeth Hosking won't forget this.
- 10—Ironwood A Capella Choir featuring Marie Jendron.
- 18—Phy. Ed. Demonstration.
- 19, 20, and 21—Upper Peninsula Basketball Tourney Hosts.
- 22—College Symphony presents Dr. Williams's Symphony in A Minor.
- 27—Winter Term ends.

**April—**

- 6—Spring Term begins.
- 10-13—Easter Vacation.
- 14—U. of M. Glee Club.
- 16—Tri Mu Gals in Northern Brightlights.
- 22—Grekala elected Theta Head.
- 29—Men's Dinner. Major John L. Griffith, Guest speaker.

**May—**

- 4—Assembly: Charles Lounsbury, "War on Racketeers."
- 6—Tri Mu's announce Keating Schaeffer as new President.
- 6—Girls' Glee Club Spring Concert.
- 10—Two Juniors, Steve Baltic and Bob Laurie, are elected by men of Northern to serve on the Men's Union Executive Committee for next year.
- 13—Jil Edwards entertains Co-eds at annual banquet.
- 19—College Band Annual Program.
- 23—Abnormal Psychology class visits Newberry.

**June—**

- 5—Rush Day. We look on!
- 10—Juniors star in annual play, "Laburnum Grove."
- 18—School closes until next year.

YEAR 1936-37

**September—**

- 26—Seniors at last! Welcome new faculty members: Miss Ayres, Miss Keal, Miss Loubert, Miss Rarick, Miss Soles, and Mr. Miserez. McCollom returns from West Indies.
- 26—Oshkosh—6; N. S. T. C.—0. Gleason becomes Captain.

**October—**

- 6—Many seniors announced in News Staff.
- 6—Myron Johnson completes work on a new telescope.
- 9 and 10—M. E. A. Convention and Homecoming. Tech—7; Northern—13.
- 19—The Music Faculty present a program.
- 26—Assembly: Charles Wakefield Cadman Quartette.
- 31—Whoops! Tech—6; Northern—12.

**November—**

- 1—Students complain about headaches received from reading Sec and Saw.
- 4—We elect officers again: Bob Laurie, President; Steve Baltic, Vice-President; Elsie Teppo, Secretary; Grace Hanner, Treasurer.
- 5—Assembly: Ben Ames, Foreign Correspondent.
- 6—Gammas send us to Hades!
- 11—Basketball Schedule announced: Gleason, Fish, Baltic, and Wiitala receive final Football awards.
- 16—Harry Kahne—Upside Down and Backwards.

**December—**

- 11—Soph Prom.
- 13—Christmas Cantata.
- 15—Christmas Party in Foyer. Fall term ends.

**January 1937—**

- 4—Winter Term begins.
- 8 and 9—Two basketball victories: Ironwood and Northland.
- 12—Assembly: Slim Williams—Alaska, Our Last Frontier.
- 26—Russian Theatre: Ivan Mankoff's Les "Jan Jaux."

**February**

- 5—Basketball; M. C. M.—41; Northern—42. Winifred Wimmer elected to lead Deltas.
- 17—Drama Club presents "A Matter of Choice."
- 18—Thetas and Mus almost fight in Assembly Thriller.
- 19—Basketball Team winds up Lower Michigan invasion.
- 24-28—Men's Debaters journey to Huntington, Indiana, Tourney. 5 wins and 7 losses.

1937 **Class Day** 1937

26—Season ends. Northern—50; Jordan—22. Good-bye to Wiitala, Gleason, Brigman, Hill, and Hoffman.

**March—**

- 1—Dr. G. A. Raiguel, World Observer.
- 2—Orvo Maki, Robert Anderson, Esther Kumpailainen, Helen Jalonen and Myron Johnson initiated into Kappa Delta Pi.
- 5 and 8—McLean and Worth conclude three years of Inter-collegiate Debating in dual debates with Tech.
- 11—Women's Banquet. Senior Girls receive yellow roses.
- 19—A grand Phy. Ed. Demonstration.
- 22—Assembly—College Symphony Orchestra.
- 22—Winter term closes. Mr. Miserez leaves to return during Summer Term.

**April—**

- 5—We enroll for the last time. Welcome back, Dr. Bowman.
- 12—Spotlight Sketches—Assembly.
- 14—Assembly: Chester Scott Howland, Blubber Hunters.
- 16—Theta Minstrel Show.
- 23—Co-ed Formal Dress Party.
- 30—Under seas! Junior Prom.

**May—**

- 6—Senior Girls appear for last time in Glee Club Concert.
- 8—Track: Northern—78; Tech—44.
- 10—Assembly: Students from School for the Blind.
- 13—Laurie, Hubbard speak at Men's Dinner.
- 19—Elizabeth Hosking receives scholarship to U. of Michigan.
- 19—College News reviews Dr. Bowman's Book—Pecos Bill.
- 22 and 29—Upper Peninsula Music Festival.
- 24—Assembly: Rabbi Waterman.

**June—**

- 4—Jack Hubbard heads Police at our last Rush Day—good work, Frosh.
- 9—Award Assembly: Co-Captain Gleason, Hoffman, Brigman, Wiitala, and Hill receive their final basketball awards. Good work, fellas! Seniors have their picture taken.
- 10—Junior Play, "Mary the Third."
- 11—Phi Epsilon Dinner.
- 14—Class Day Program—"Senior Circus." Senior Picnic—we abandon our traditional dignity to romp and frolic at the Tourist Park.
- 18—Faculty Reception for the Class of 1937.
- 20—Baccalaureate.
- 21—Commencement. Aloha!

Guelf Ptg. Co., Marq.