

*t  
h  
e*

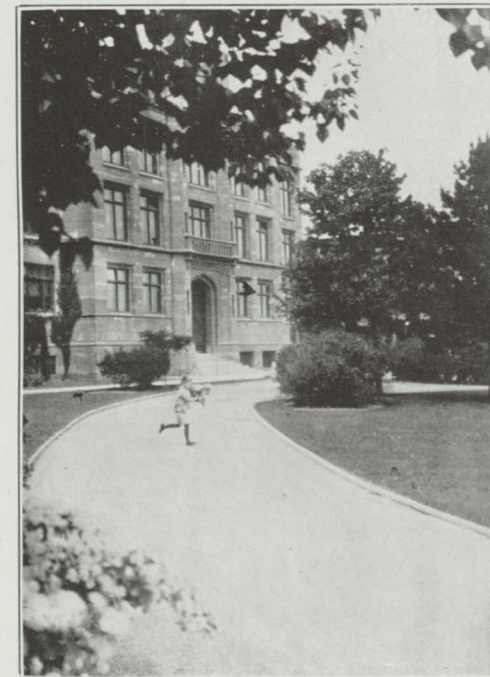
*1  
9  
4  
1*

*Campuseer*

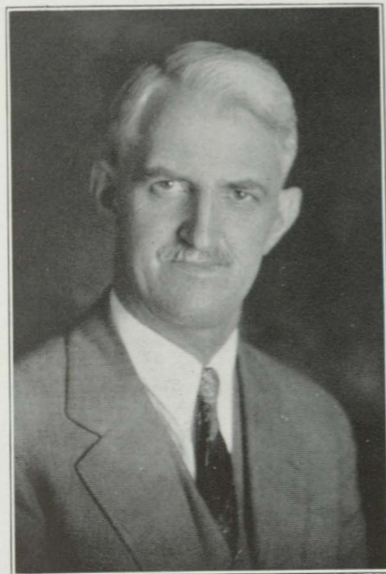
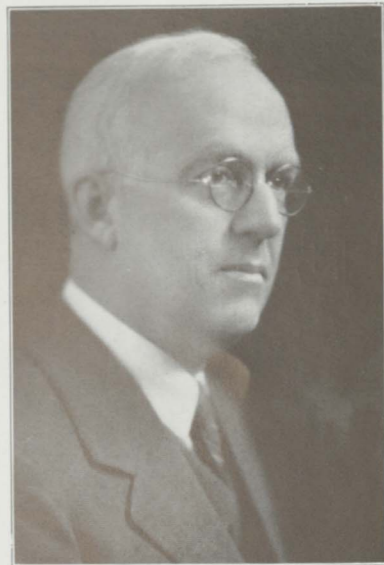
Lays

THE  
CAMPUSEER

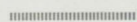
1941 EDITION



Published by  
SENIOR CLASS  
Northern State Teachers College  
MARQUETTE, MICHIGAN



## Dedication



In memory of Webster H. Pearce and Harry D. Lee, for whom courage, perseverance, and service were not grand things reserved only for the elect, but the plain essentials of a living philosophy, this annual is respectfully dedicated.

## Foreword

Every human activity has a natural setting. Fundamental to the settlement and development of the Upper Peninsula was the existence of certain natural raw materials and conditions whose exploitation drew the early settlers to the area. Simple and crude as were their early methods, they were the basis for the complicated processes we observe today.

As settlers came to exploit the raw materials of the area, they themselves constituted the raw material for another human activity.....that of education. As the area became more densely populated, the need for education necessarily grew. Parallel to the growth of the need for education was the need for a trained personnel to direct that education. The raw material of this particular activity is the people of the area. Thus, as our ancestors went forth to develop necessary raw materials a century ago, the teacher today goes forth to work with raw material, to develop the essential resources of human minds, and to develop products of great value by use of the same perseverance and determination as the early settlers. From such a need did this institution arise and if we, the editors of this volume, have presented a true picture of the activities involved, we shall have fulfilled our purpose.

## CONTENTS

FACULTY  
CLASSES  
ORGANIZATION  
ATHLETICS  
ACTIVITIES



## The Campuseer

### CO-EDITORS

Marjorie Alvord      Manual Wolfe

**Business Manager**  
Gerald Grundstrom

**Advertising Manager**  
Walter Berge

**Sales Manager**  
Ira Griffin

Daisy Kilmer

Mary Williams

### Art

Anna Wolfe

William Sargent

### Sports

Gilbert Maienknecht      Russell Christian

### Features

Doris Walker

### Staff

Douglas Kell

Toivo Lauri

Carl Dyster

Donalda Graham

Clifford Bedore

John Anthony

Olive Larson

The staff also wish to acknowledge the valuable assistance given by two juniors, Miriam Bates and Clarence Sayen, in the art and make-up departments, respectively.



## FACULTY

Certain essential steps are necessary in the progression from the raw materials to the finished product. One of these steps is the gathering of the necessary materials at a single site where they can be processed under the direction of skilled technicians. A typical example of this is the removal of iron ore from the bowels of the earth here in the Upper Peninsula to the local docks from where it is transshipped in huge lake freighters to the steel plants. Another example is the faculty of an educational institution, gathered from distant points to direct the processing of human resources into useful products.



## Administration

This school year brought the first change in the administrative staff since the appointment of President Pearce, eight years ago.

Northern's new head, Dr. Henry A. Tape, came here in December from Michigan State Normal College, Ypsilanti, where he was principal of the Lincoln Laboratory School and associate director of training. A native of Michigan, Dr. Tape has spent his entire teaching career in the state, and had been situated at Ypsilanti for seventeen years prior to his coming here.

In March, Northern welcomed Dr. Joseph C. Dewey as new superintendent of the training school and head of the Placement Bureau. Dr. Dewey, who has had extensive experience in public school work, came here from New Wilmington, Pennsylvania, where he had been head of the Department of Education and Teacher Placement at Westminster College.

Mr. Don H. Bottum, principal of John D. Pierce Training School, has been promoted as Dean of Men and assistant head of the Placement Bureau.

Miss Ethel Carey and Mr. L. O. Gant retain their positions as Dean of Women and Registrar, respectively.





## Social Science



History, political science, economics, and sociology, are the principal divisions of this department.

Progressive features are followed in curriculum flexibility, and new courses are added frequently to give adequate scope to rapidly developing current problems and events which might otherwise receive only cursory attention.

**Lew A. Chase, A. B., A. M.**  
History and Political Science

**Harry B. Ebersole, A. B., A. M.**  
History

**E. J. Howenstine, A. B., A. M.**  
Economics and Sociology

## Fine Arts

While this department, officially, is the parent organization of two academic clubs, Art and Music, it is responsible for many more in the musical field which provide extra-curricular opportunities. Students in this department may be found in at least six different musical groups of which band, chorus, and orchestra are the major ones.

**Roy A. Williams, B. S., M. M., A. M., Ph. D.**  
Music

**Ruth Craig, B. M., M. M.**  
Music

**Margaret Rarick, B. S., M. S.**  
Music

**Nadia M. Thorpe, B. S.**  
Art

**Eugenia M. Oole, A. B., A. M.**  
Art



## Physical Education



The Department of Physical Education offers a number of courses in this field which make possible a wholesome physical development.

Students unable to take part in interscholastic competition, are offered a variety of courses. In the field of health education the principles of calisthenics, physical diagnosis, kinesiology, and personal hygiene are given special emphasis.

**Charles B. Hedgecock, B. S., Ed. M.**  
Physical Education

**R. Victor Hurst, B. S., A. M.**  
Physical Education

**Miss Marian Ayres, B. S., M. S.**  
Physical Education

**Miss Myrtle Stokke, B. E., A. M.**  
Physical Education



## Education

Theory followed by practical application enables prospective teachers to accumulate the tools of the teaching profession. The Education Department concentrates on this objective.

It is in this department that teachers put into actual practice the general principles and techniques of teaching and begin to develop an adequate conception of professional consciousness.

**Joseph Dewey, B. S., A. M., Ph. D.**

**C. E. Clucas, B. S., A. M., Ph. D.**

**G. L. Brown, B. Litt., A. M.**

**F. R. Copper, A. B., A. M.**

**Maude L. Van Antwerp, B. S., A. M.**

**Olive Fox, A. B., A. M.**



## Library Staff



**Lydia M. Olson, Ph. B., M. Ed.**  
Librarian

**Maxine E. Sprague, A. B.**  
A. B. L. S.

**Matilda E. Larson, A. B.**

**E. Geraldine Ferring, A. B.,**  
A. B. L. S.

**Aida Dutmer**

## General Office Staff

**Priscilla Densmore**  
Placement Secretary

**Jeannette M. Skinnard, A. B.**  
Secretary to President

**Elizabeth Wentela,**  
Assistant Registrar

**Jean Wittler,**  
Secretary to Registrar





## Practical Arts



- Earl A. Ferns, B. S., M. S.**  
Industrial Arts
- Wayne B. McClintock, B. S., M. S.**  
Industrial Arts
- Ruby Richey, B. E., A. M.**  
Home Economics
- Casey C. Wiggins, B. S., A. M.**  
Commerce
- Josephine Long, B. S., A. M.**  
Commerce
- Jane Bemis, A. B., A. M.**  
Home Economics

This department includes the widely varied fields of industrial arts, commerce, home economics, and agriculture and probably has a wider student membership in its academic clubs than any other department.

Customarily, the largest specialized field for men, the industrial arts section this year had an enrollment of over 50. The call for students in industrial arts is usually great and the department impliedly assumes a new importance with the growing need for skilled men in industry.

Women in the Home Economics department are enabled to qualify under the provisions of the Smith-Hughes and George-Deen Acts, a special curriculum being arranged for them.

## Critic Teachers



- Don H. Bottom, A. B., A. M.**  
**Ethel Griswold, A. B., A. M.**  
**Olive M. Fox, A. B., A. M.**  
**Mayme R. McCarter, B. Ed., M. Ed.**  
**Carl M. Slick, B. S., E. M., M. S.**  
**Martha Mehnert, Ph. B., A. M.**  
**Lucile Payne, A. B., A. M.**
- Rollin K. Thoren, A. B., A. M.**  
**Helen B. Marsh, B. S., A. M.**  
**Vera Haven, A. B., A. M.**  
**Josephine Long, B. S., A. M.**  
**Flora M. Loubert, B. E., A. M.**  
**Martha Cooley, B. S., A. M.**  
**Frances Herald, B. S., A. M.**



## Language and Literature



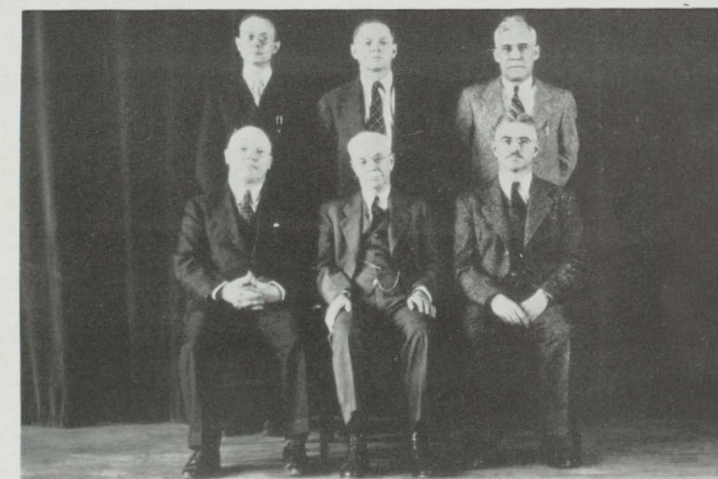
- Russell Thomas, A. B., A. M., Ph. D.**  
English
- Evelain E. Archambault, A. B., B. Litt., A. M.**  
French
- Mildred K. Magers, A. B., A. M.**  
English
- Gunther C. Meyland, A. B., A. M.**  
English
- Lena C. Durboraw, A. B., A. M.**  
English
- Forest A. Roberts, A. B., A. M.**  
Speech
- Earle M. Parker, A. B., A. M.**  
Latin and German

Students majoring in literature are offered twenty-nine courses in this department, exclusive of those in language. In addition to the intensive literature courses, excellent opportunities in the specialized fields of debate and drama offer practical experience to interested students, including those majoring in other departments.

Students in this department find extra-curricular opportunities in such academic clubs as the Minervans, Debating Society, Dramatic Club, L'Alliance Francaise, English Club, Forum Society, and the Men's Discussion Club.

## Science

- Lynn H. Halverson**  
A. B., A. M., Ph. D.  
Geography and Geology
- George S. Butler**  
B. S., M. S.  
Botany
- Dell S. Garby**  
B. S., Ph. D.  
Physical Science
- Lucian F. Hunt**  
B. S., A. M., Ph. D.  
Chemistry
- Roy M. McCollom**  
B. S., M. S.  
Geography
- Oscar F. Mattson**  
Ph. B., Ph. M.  
Mathematics
- Charles C. Spooner**  
A. B., A. M.  
Mathematics
- Luther S. West**  
B. S., Ph. D.  
Natural Science
- Leita Davy**  
B. S., M. S., Ph. D.



Largest department at Northern, this division embraces the fields of biology, chemistry, physics, mathematics, geography, geology, astronomy, hygiene, and agriculture and includes courses in many associated and co-related subjects. Well over fifty courses are offered in the first four groups alone.

Pre-professional students and others not preparing for teaching are afforded a wide range of courses which meet university requirements in their particular fields.

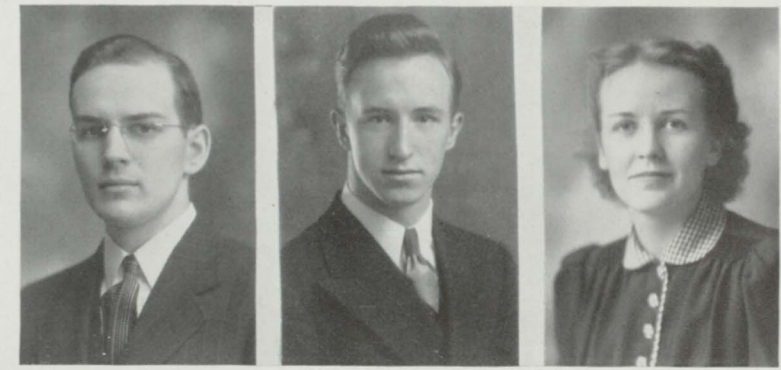
Academic clubs fostered by this department include the Cambium Club, Geography Club, and Math Club.





## CLASSES

The purifying of any raw material requires certain definitely planned processes each of which must be adequately completed before the next can be started. Successful completion of each of these processes insures the quality of the finished product. A relic of one of the earliest processes used in steel-making is the old charcoal kiln which is found about the Upper Peninsula. Similarly, in an educational institution, the student must successfully complete four required steps which are necessary for his graduation into the ranks of finished products.



OFFICERS

PRESIDENT .....	Rupert Otto
VICE-PRESIDENT .....	George Gill
TREASURER .....	Vivian Fadner
SECRETARY .....	Doris Walker

*Seniors*

As enthusiastic a class of seniors as ever assembled at Northern began outlining a program of activities soon after the fall semester opened.

While several of the projects proposed never reached culmination, the class did achieve two happy objectives, the Senior Dinner and the Campuseer.

The dinner, held in the recreation rooms on December 5, was the first event of its kind held at Northern. The program which followed included selections by the senior quartet of George Gill, Frank Paul, Rupert Otto, and George Cavender.

In February, the class sponsored a movie at the Nordic Theatre as a yearbook benefit.

Last frolic before the annual picnic, was the Senior assembly program, at which the graduates exhibited the customary crazy capers.



CLASS ADVISER  
Dr. Charles E. Clucas





Alexander, Catherine D. (B. S.)

Kappa Delta Pi, 4  
Beta Omega Tau, 1, 2, 3, 4;  
Vice-pres., 3;  
Treas., 4;  
Forum, 1, 2, 3, 4;  
Vice-pres., 3, 4;  
Chorus, 3, 4.



Alvord, Marjorie (B. S.)

Cegmer Ceg, 1, 2, 3, 4;  
News Staff, 1, 2, 3, 4;  
Prom Comm., 2, 3;  
Art Club, 4;  
Forum, 4;  
Kdgtn.-Primary Club, 4;  
Co-editor, Campuseer.



Anderson, Dorothy Jean (B. S.)

Kappa Delta Pi, 4;  
Beta Omega Tau, 1, 2, 3, 4;  
Treas., 2; Pres., 3;  
L'Alliance Francaise, 1;  
Kdgtn.-Primary Club, 4;  
Orchestra, 2;  
Mixed Chorus, 2, 4;  
Music Club, 4;  
Girls' Glee Club, 1, 2, 3, 4.



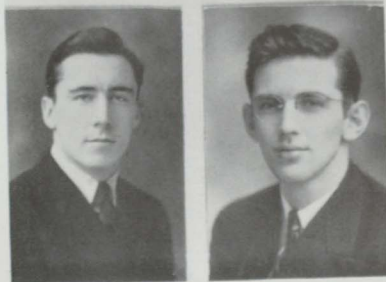
Asselin, Elaine M. (B. S.)

Tau Pi Nu, 4;  
Newman Club, 4;  
L'Alliance Francaise, 4;  
Kdgtn.-Primary Club, 4;  
Glee Club, 4.



Bedore, Clifford J., Jr. (A. B.)

Tri Mu, 3, 4;  
"Brightlights", 3;  
Cambium Club, 4;  
Apparatus Club, 1, 2;  
Varsity Club, 1, 2;  
Football, 1, 3, 4;  
Basketball, 1; Track, 1.



Berge, Walter (A. B.)

Tri Mu, 1, 2, 3, 4;  
Math. Club, 1, 2, 3;  
"Brightlights", Bus. Mgr. 3;  
Junior Class Play Bus. Mgr.  
Campuseer Staff, Adv. Mgr.;  
Basketball, 1, 2;  
Football, 1, 2;  
Tri Mu Basketball, 3, 4.

Blohm, Lauren B. (B. S.)

Band, 2, 3, 4;  
Orchestra, 2, 3, 4;  
Little Symphony, 3, 4;  
Auxiliary Orchestra, 4;  
Glee Club, 2, 3, 4;  
Chorus, 2, 3, 4;  
Music Club, 2, 3, 4;  
Treas., 3.

Borema, Ford (A. B.)

Mason County Normal;  
Cambium Club, 4.

Brotten, Ruth M. (B. S.)

L. S. A., 2, 3;  
Drama Club, 3, 4;  
Novahoma, 1, 2, 3, 4;  
Sec'y, 3;  
Vice-pres., 4;  
Orchestra, 1;  
Chorus, 3.

Bucklin, Clyde F. (A. B.)

I. M. A., 3, 4;  
Men's Discussion, 3, 4;  
Geography, 4;  
Football, 1.

Burns, Lois I. (B. S.)

Gamma Phi Alpha, 1, 2, 3, 4;  
Kdgtn.-Primary Club, 1, 2;  
Drama Club, 4;  
Wesleyan Guild, 1, 2, 3, 4;  
Junior Play;  
Glee Club, 1, 2, 3, 4;  
Orchestra, 2;  
Chorus, 1, 2, 4.

Butler, Virginia L. (A. B.)

Delta Sigma Nu, 1, 2, 3, 4;  
Sec'y, 4;  
Class Sec'y, 3;  
Geography Club, 4;  
Sec'y-Treas., 4;  
Wesleyan Guild, 1, 2, 3, 4;  
Delta Basketball, 1, 2, 3.

Cavender, George R. (B. S.)

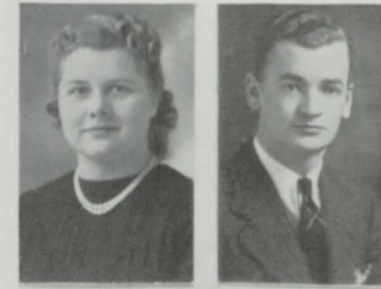
Class Pres., 2;  
Junior Play;  
Band, 1, 2, 3, 4;  
Orchestra, 1, 2, 3, 4;  
Glee Club, 1, 2, 3, 4;  
Chorus, 1, 2, 3, 4;  
Male Octet, 1, 2, 3, 4;  
Violin Quartet, 1, 2, 3, 4;  
Male Quartet, 4;  
Music Club, 1, 2, 3, 4;  
Co-founder;  
Little Symphony, 2, 3, 4;  
LSA Chorus.

Christian, Russell C. (A. B.)

Junior Play  
Phy. Ed. Club, 1, 2, 3, 4;  
Campuseer Staff;  
Track, 1, 2, 3, 4;

Clayton, Merle A. (B. S.)

News Staff, 4;  
Geography Club, 2;  
Drama Club, 2;  
Junior Play,  
Theta Minstrels, 1;  
Band, 1, 2, 4;  
Orchestra, 1, 2, 4;  
Chorus, 1, 2, 4;  
Woodwind Ensemble, 1;  
Glee Club, 1, 4;  
Male Octet, 1;  
Male Quartet, 4;  
Music Club, 1, 2, 4;  
Director, Music Club Chorus, 4;  
Little Symphony, 1, 2, 4.



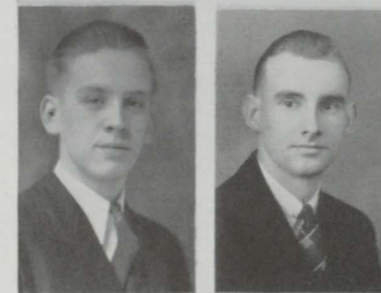
Dyster, Carl R. (A. B.)

Cambium Club, 4;  
Campuseer Staff, 4.



Fadner, Vivian M. (B. S.)

Delta Sigma Nu, 1, 2, 3, 4;  
Sec'y., 4;  
Wesleyan Guild, 1, 2, 3, 4;  
Kdgtn.-Primary Club, 2, 3, 4;  
Phy. Ed. Club, 2, 3, 4;  
Forum, 3, 4;  
News Staff, 3, 4;  
Delta Basketball, 1, 2, 3, 4;  
Class Treasurer, 4.



Findlay, James E. (B. S.)

Industrial Arts Club, 2, 3, 4;  
Vice-pres., 4.



Gendron, Leo J. (B. S.)

Newman Club, 1, 2, 3, 4;  
Drama Club, 2, 3, 4;  
Pres., 4;  
Junior Play;  
Art Club, 2;  
Glee Club, 1, 2, 3;  
Music Club, 2, 3;  
Chorus, 1, 2, 3, 4.



Ghiardi, Mary C. (B. S.)

Phi Epsilon, 2, 3, 4;  
Kappa Delta Pi, 3, 4;  
Sec'y., 4;  
Tau Pi Nu, 1, 2, 3, 4;  
Girls' League Council, 3, 4;  
Sec'y.-Treas., 3;  
Pres., 4;  
Drama Club, 3, 4;  
Social Science Club, 3;  
Commercial Club, 1, 2, 3, 4;  
Treas., 2; Vice-pres., 4.





Gill, George S. (B. S.)

Class Vice-Pres., 4;  
Prom Comm., 2;  
L'Alliance Francaise, 4;  
Band, 1, 2, 3, 4;  
Orchestra, 1, 2, 3, 4;  
Chorus, 1, 2, 3, 4;  
Glee Club, 1, 2, 3, 4;  
Male Octet, 2, 3, 4;  
Male Quartet, 4;  
Music Club, 2, 3, 4;  
Music Club Chorus, 2, 4;  
Little Symphony, 2, 3, 4;  
Conductor, 4;  
Director, Girls' Band, 3.



Graham, Donald J. (A. B.)

Phi Epsilon, 2, 3, 4;  
Pres., 3;  
Kappa Delta Pi, 3, 4;  
Delta Sigma Nu, 1, 2, 3, 4;  
Pres., 4;  
Class Treas., 3;  
Junior Play;  
Debate, 2, 4;  
English Club, 3, 4;  
Campuseer Staff;  
Glee Club, 1, 2, 3;  
Chorus, 1, 2.



Grantz, Hilmer W. (B. S.)

Tri Mu Assoc. Member, 4;  
Geography Club, 4;  
Intramural Basketball, 1, 2, 3, 4;  
Baseball, 3, 4.



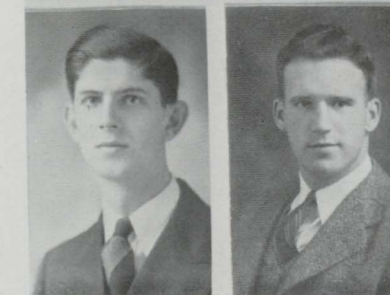
Greene, Ruth A. (B. S.)

Drama Club, 3, 4;  
Newman Club, 3, 4.



Griffin, Ira L., Jr. (A. B.)

Transfer from St. Ambrose Coll.,  
Davenport, Iowa;  
Tri Mu Assoc. Member, 4;  
Class Pres., 3;  
Drama Club, 3, 4;  
Debate, 2, 4;  
Junior Play;  
Men's Discussion, 2, 3, 4;  
Campuseer Staff, Sales Mgr.  
Track, 2, 3, 4.



Griffin, Joseph H. (A. B.)

Transfer from Michigan State College.

Grundstrom, Gerald E. (B. S.)

Kappa Delta Pi, 4;  
Men's Union, Pres., 4;  
Math Club, 3, 4;  
Pres., 3;  
Campuseer Staff, Bus. Mgr.

Harris, Viola G. (B. S.)

Gamma Phi Alpha, 1, 2, 3, 4;  
Commercial Club, 1, 2, 3, 4;  
Sec'y., 2, 3, 4;  
Prom Comm., 3.

Harter, Imogene G. (A. B.)

Transfer from Compton Jr. College,  
Compton, Calif.;  
Wesleyan Guild, 3, 4;  
Forum, 3, 4;  
Cambium Club, 4.

Hartman, Frank (B. S.)

Transfer from Michigan State College;  
Tri Mu, 3, 4;  
Phy. Ed. Club, 4;  
Football, 1, 3, 4.

Hartman, Marie M. (B. S.)

LSA, 2, 3, 4;  
Geography Club, 4;  
Kdgt.-Primary Club, 3, 4.

Hautala, Elaine P. (A. B.)

Phi Epsilon, 2, 3, 4;  
Kappa Delta Pi, 3, 4;  
Hist.-report., 4;  
Gamma Phi Alpha, 1, 2, 3, 4;  
Treas., 2;  
Vice-pres., 3;  
Pres., 4;  
Forum, 1, 2, 3, 4;  
Sec'y., 1;  
Pres., 3;  
Math Club, 1, 3;  
English Club, 4;  
LSA, 1, 2, 4.

Heilala, Nina E. (B. S.)

Phi Epsilon, 2, 3, 4;  
Kappa Delta Pi, 3, 4;  
LSA, 2;  
Kdgt.-Primary Club, 2, 3, 4;  
Vice-pres., 4.

Hintsala, Martha M. (B. S.)

LSA, 2;  
Kdgt.-Primary Club, 2, 3, 4;  
Sec'y., 3.

Holman, Helen E. (B. S.)

Delta Sigma Nu, 1, 2, 3, 4;  
Class Sec'y., 2;  
Forum, 1, 2, 3, 4;  
Drama Club, 2, 3;  
Novahoma, 1, 2, 3;  
Wesleyan Guild, 1, 2, 3, 4;  
Delta Basketball, 1, 2.



Jackson, Clifford W. (B. S.)

Commercial Club, 4;  
Cambium Club, 4;  
Music Club, 3;  
Band, 1, 2;  
Mixed Chorus, 1, 2, 3;  
Orchestra, 1;  
Glee Club, 1, 2.



Jewell, Evelyn M. (B. S.)

Kdgt.-Primary Club, 2, 3.



Johnson, Andrew G. (A. B.)

Tri Mu, 1, 2, 3, 4;  
"Brightlights", 1;  
Men's Discussion, 2, 3;  
Math Club, 1, 2, 3;  
Wesleyan Guild, 1, 2, 3, 4.



Juntunen, Helen C. (B. S.)

LSA, 1, 2;  
Minervans, 1, 2;  
Kdgt.-Primary Club, 4.



Kell, Douglas P. (A. B.)

Tri Mu, 1, 2, 3, 4;  
Sec'y., 2;  
Corr. sec'y., 3;  
Pres., 4;  
"Brightlights", 1, 3;  
Asst. Bus. Mgr., 3;  
News Staff, 2, 3, 4;  
Social Science Club, 3, 4;  
Pres., 3, 4;  
Prom Comm., 2, 3.





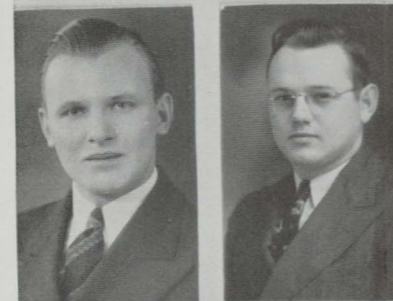
Kilmer, Daisy G. (B. S.)  
 Phi Epsilon, 3, 4;  
 Kappa Delta Pi, 3, 4;  
 Vice-pres., 4;  
 Tau Pi Nu, 3, 4;  
 Girls' League Council, 3;  
 Art Club, 4;  
 Minervans, 2, 3, 4;  
 Sec'y., 4;  
 Kdgtn.-Primary Club, 2, 3, 4;  
 Vice-pres., 3; Pres., 4.



Koski, Emil T. (B. S.)  
 Tri Mu, 1, 2, 3, 4;  
 Industrial Arts Club, 1, 2, 3, 4;  
 Pres., 4;  
 Junior Class Play;  
 LSA, 1, 2, 3, 4;  
 Football, 1, 2, 3, 4;  
 Basketball, 1, 2, 3;  
 Track, 1, 2, 3, 4.



Lahti, Donald I. (B. S.)  
 Phi Epsilon, 2, 3, 4;  
 Kappa Delta Pi, 3, 4;  
 Treas., 4;  
 Industrial Arts Club, 2, 3, 4;  
 Men's Discussion, 1, 2, 3, 4;  
 Vice-pres., 3;  
 News Staff, 4;  
 Track, 1, 2, 3, 4;  
 Tennis, 3, 4.



Larson, Olive M. (B. S.)  
 Delta Sigma Nu, 1, 2, 3, 4;  
 News Staff, Mailing Editor, 4;  
 Kdgtn.-Primary Club, Treas.;  
 Glee Club, 1, 2, 3, 4;  
 Orchestra.



Lauri, Toivo J. (B. S.)  
 Tri Mu, 1, 2, 3, 4;  
 Vice-pres., 3;  
 Commercial Club, 1, 2, 3, 4;  
 Vice-pres., 2;  
 Campuseer Staff;  
 Football, 1, 2;  
 Basketball, 1, 2;  
 Track, 1, 2, 3, 4;  
 Aviation.



Leppanen, Aili (B. S.)  
 LSA, 1, 2, 3, 4;  
 Commercial Club, 1, 2, 3, 4;  
 Minervans, 3, 4; Vice-pres.

Levine, Linnea (B. S.)  
 Phi Kappa Nu, 1, 2, 3, 4;  
 Vice-pres., 2; Sec., 3; Pres., 4;  
 L. S. A., 1, 2, 3, 4;  
 Vice-pres., 4;  
 Geography Club, 3;  
 Novahoma, 2.

Londo, Allen H. (B. S.)  
 Tri Mu, 3, 4;  
 Newman Club, 2, 3, 4;  
 Cambium Club, 4.

Maienknecht, Gilbert O. (B. S.)  
 Transfer from Mich. State College;  
 Tri Mu, 2, 3, 4;  
 Northern "Brightlights", 3;  
 Corr. Sec'y., 4;  
 News Staff, 2, 3, 4;  
 Sports Editor, 3, 4;  
 Cambium Club, 4;  
 Sec'y., 4;  
 Commercial Club, 3, 4;  
 Campuseer, Sports Editor;  
 Intra-Mural Athletics;  
 Director, Boxing Tourney, 3.

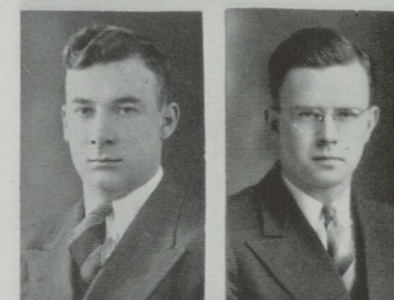
Mattila, Viola H. (A. B.)  
 Transfer from Gogebic Junior College,  
 Ironwood;  
 Kappa Delta Pi, 4;  
 LSA, 3, 4;  
 Minervans, 4;  
 Math Club, Sec'y., 3, 4.



Miller, Ethel K. (B. S.)  
 Phi Epsilon, 2, 3, 4;  
 Kappa Delta Pi, 3, 4;  
 Minervans, 3, 4;  
 Treas., 4;  
 Commercial Club, 1, 2, 3, 4;  
 Sec'y., 3; Treas., 4.



Millman, William M. (B. S.)  
 Football, 1, 2, 3;  
 Track, 1, 2, 3, 4;  
 Phy. Ed. Club, 1, 2, 3, 4.



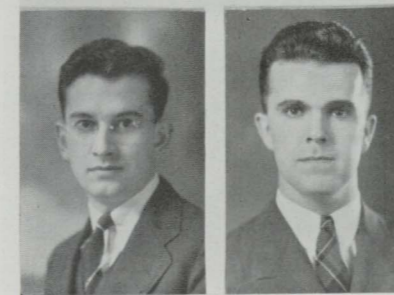
Minzey, F. Lorraine (A. B.)  
 Newman Club, 1, 2, 3, 4;  
 Cambium Club, 4;  
 Math Club, 1, 2, 3;  
 Minervans, 3, 4.



Moody, Helen M. (B. S.)  
 Kdgtn.-Primary Club, 4;  
 Sec'y., 4;  
 Chorus, 1, 2, 3.



Naber, Warren H. (B. S.)  
 Industrial Arts Club, 1, 2, 3, 4;  
 Math Club, 1;  
 Wesleyan Guild, 1, 2, 4.



Newberg, Katherine F. (B. S.)  
 Gamma Phi Alpha, 1, 2, 3, 4;  
 Pres., 3;  
 Novahoma, 2, 3, 4;  
 Pres., 4;  
 LSA, 1, 2, 3.

Norell, Reno (B. S.)  
 Band, 1;  
 Orchestra, 1;  
 Glee Club, 1;  
 Commercial Club, 3, 4.

Olivier, Frances M. (B. S.)  
 Beta Omega Tau, 1, 2, 3, 4;  
 Pres., 4;  
 News Staff, 3, 4;  
 Feature Editor, 4;  
 Newman Club, 1, 2, 3, 4;  
 Vice-Pres., 3;  
 Commercial Club, 1, 2, 3, 4;  
 Treas., 4;  
 L'Alliance Francaise, 1.

Otto, Rupert G. (A. B.)  
 Class Pres., 4;  
 I. M. A., 3, 4;  
 Sec'y., 4;  
 English Club, 3, 4;  
 Treas., 4;  
 Men's Discussion, 3;  
 Music Club, 4;  
 Mixed Chorus, 4;  
 Glee Club Accompanist, 4.

Paddock, Lenwood (B. S.)  
 Men's Union Sec'y-Treas., 3;  
 Vice-Pres., 4;  
 News Staff, 4;  
 Phy. Ed. Club, 1, 2, 3, 4;  
 Pres., 4;  
 Football, 1, 2, 3, 4;  
 Phy. Ed. Basketball, 1, 2, 3;  
 Track, 1, 2, 3.





Paris, Esther E. (B. S.)

Tau Pi Nu, 1, 2, 3, 4;  
Vice-Pres., 4;  
Forum, 1, 2, 3, 4;  
Treas., 2, 3;  
Newman Club, 1, 2, 3, 4;  
Kdgt.-Primary Club, 3;  
Geography Club, 4.



Rogers, Jack A. (B. S.)

Tri Mu, 1, 2, 3, 4;  
Geography Club, 3, 4;  
Prom Comm., 3;  
"Brightlights", 1, 3;  
Men's Discussion, 4;  
LSA, 4;  
Football, 1, 2;  
Basketball, 1;  
Track, 1, 2, 4;  
Intra-mural Basketball, 2, 3, 4;  
Baseball, 3.

Paull, Frank (B. S.)

Theta Omicron Rho, 1, 2, 3, 4;  
L'Alliance Francaise, 2;  
Horizontal Bar Team, 1, 2, 3, 4;  
Band, 1, 2, 3, 4;  
Orchestra, 1, 2, 3, 4;  
Glee Club, 1, 2, 3, 4;  
Theta Minstrels.



Roman, Albert J. (B. S.)

Industrial Arts Club, 1, 2, 3, 4;  
Aviation.

Petersen, Jayne R. (B. S.)

Phi Epsilon, 2, 3, 4;  
Kappa Delta Pi, 3, 4;  
Delta Sigma Nu, 1, 2, 3, 4;  
Vice-Pres., 4;  
Novahoma, 1, 2, 3, 4;  
Vice-Pres., 3;  
Class Treas., 1;  
Drama Club, 1, 2, 3, 4;  
Sec'y.-Treas., 2;  
Pres., 3;  
Wesleyan Guild, 1, 2, 3, 4.



Ropelle, Lorraine J. (A. B.)

Tau Pi Nu, 2, 3, 4;  
Pres., 4;  
Corr. Sec'y., 3;  
Newman Club, 1, 2, 3, 4;  
Sec'y., 3;  
Forum Society, 3, 4;  
Chorus, 2.

Peterson, Quentin (B. S.)

I. M. A., 3, 4;  
Vice-Pres., 4;  
Industrial Arts Club, 3, 4;  
Cambium Club, 3, 4;  
Vice-Pres., 4.



Rova, G. Adolph (B. S.)

Transfer from Valley City S. T. C.  
Valley City, N. D.;  
Cambium Club, 4;  
Industrial Arts Club, 4.

Puhék, Joseph A. (B. S.)

Transfer from Jordan College;  
Tri Mu, 3, 4;  
Newman Club, 3, 4;  
Industrial Arts Club, 3, 4;  
Football, 3, 4;  
"Brightlights", 3;  
Tri Mu Basketball, 4;  
Aviation.

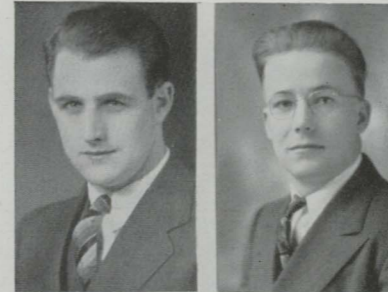


Samanen, Signe M. (B. S.)

LSA, 1, 2, 3, 4;  
Vice-Pres., 3;  
Minervans, 1, 2, 3, 4;  
Pres., 3;  
Commercial Club, 1, 2, 3;  
Art Club, 3, 4.

Sargent, William T. (B. S.)

Kappa Delta Pi, 3, 4;  
Phi Epsilon, 2, 3, 4;  
Class Vice-Pres., 3;  
Junior Prom Comm. Chairman;  
Industrial Arts Club, 2, 3, 4;  
Pres., 3.



Sharron, Clarice (B. S.)

Gamma Phi Alpha, 2, 3, 4;  
Newman Club, 1, 2, 3, 4;  
Commercial Club, 1;  
Novahoma, 2, 3, 4;  
Chorus, 2.

Smolich, Kathryn D. (B. S.)

Kdgt.-Primary Club, 2, 3, 4;  
Newman Club, 2, 3, 4.



Spigarelli, Orlando (B. S.)

Tri Mu, 1, 2, 3, 4;  
Northern "Brightlights", 1, 3;  
News Staff, 3, 4;  
Sports Editor, 4;  
Newman Club, 1, 2, 3, 4;  
Phy. Ed. Club, 1, 2, 3, 4;  
Cambium Club, 4;  
Basketball, 1, 2, 3, 4;  
Football, 1, 2, 3;  
Track, 2;  
Intra-mural Basketball, 1, 2, 3, 4;  
Aviation.



Sundquist, John D. (B. S.)

Math Club, 1, 2, 3;  
Football, 1;  
Basketball, 1;  
Intra-mural Basketball, 2, 3, 4;  
Baseball, 1, 2, 3, 4.

Tolonen, Albert W. (A. B.)

Kappa Delta Pi, 4;  
Geography Club, 2, 3, 4.

Vannberg, Viola A. (A. B.)

Transfer from Nat'l College of Ed.  
Evanston, Ill.;  
Cegmer Seg, 3, 4;  
Novahoma, 3, 4;  
Kdgt.-Primary Club, 4.

Waters, Elsie M. (B. S.)

Kdgt.-Primary Club, 1, 2, 3, 4;  
Chorus, 3, 4.



Steinbach, Claire E. (A. B.)

Newman Club, 1, 2, 3, 4;  
Geography Club, 3, 4;  
Sec'y., 4;  
Forum, 3, 4;  
Sec'y., 4.

West, Leonard A. (B. S.)

Theta Omicron Rho, 2, 3, 4;  
Chorus, 1, 2, 3, 4;  
Industrial Arts Club, 1, 2, 3, 4;  
Horizontal Bar Team, 1, 2, 3, 4;  
Aviation, 3.





Williams, Mary E. (B. S.)  
Phi Epsilon, 3, 4;  
Kappa Delta Pi, 3, 4;  
Kdgtn.-Primary Club, 4;  
Campuseer Staff;  
Prom Comm., 2, 3.

Wolfe, Anna (B. S.)  
Delta Sigma Nu, 4;  
Girls' League Vice-Pres., 4;  
Kappa Delta Pi, 3, 4;  
Forum, 4;  
News Staff Mailing Editor, 3;  
Novahoma Club, 2;  
Prom Committee, 3;  
Campuseer Staff.

Wolfe, Manual (A. B.)  
Phi Epsilon, 2, 3, 4;  
Kappa Delta Pi, 3, 4;  
Pres., 4;  
News Staff, 1, 2;  
Sports Ed., 2;  
Men's Discussion, 4;  
Co-editor, Campuseer.

Benoit, Arthur E. (B. S.)  
Tri Mu, 2, 3, 4;  
Sec'y., 3;  
Treas., 4;  
Industrial Arts Club, 2, 3, 4;  
Cambium Club, 3, 4;  
Pres., 4;  
"Brightlights", 3.

Behrsin, Arnold E. (B. S.)  
Kappa Delta Pi, 4;  
I. M. A., 3, 4;  
L. S. A., 2, 3, 4;  
Debate, 2, 4;  
Discussion Club, 2, 3, 4;  
Pres., 4;  
Math. Club, 2.

Elnes, Nyla R. (A. B.)  
Tau Pi Nu, 1, 2, 3, 4;  
Treasurer, 2;  
Vice-pres., 3;  
Girls' League Council, 2;  
Cambium Club, 3, 4;  
Treasurer, 4.

Kee, Charles E. (A. B.)  
IMA, 3, 4;  
L'Alliance Francaise, 1, 4;  
Cambium Club, 3, 4;  
Prom Comm., 3.

Leinonen, Elsie (B. S.)  
LSA, 2, 3, 4;  
English Club, 4;  
Kdgtn.-Primary Club, 4;  
Phi Kappa Nu, 1, 2, 3, 4;  
Vice-pres., 2;  
Sec'y., 3;  
Pres., 4;

LSA, 1, 2, 3, 4;  
Vice-pres., 4;  
Geography Club, 3;  
Novahoma, 2.

Miller, Margaret (B. S.)  
Delta Sigma Nu, 1, 2, 3, 4;  
Girls' League Council, 1;  
Class Sec'y., 1;  
Commercial Club, 1, 2, 3, 4;  
Pres., 4;  
Girls' Glee Club, 3, 4;  
Delta Basketball, 1, 2, 3;  
Delta Volley Ball, 1, 2, 3.

Manthei, John M. (B. S.)  
Tri Mu, 1, 2, 3, 4;  
Pres., 4;  
Class Pres., 1;  
Commercial Club, 1, 2; Pres., 2.

Walker, Doris E. (A. B.)  
Transfer from Gogebic Junior College,  
Ironwood, Mich.;  
Delta Sigma Nu, 3, 4;  
Historian, 4;  
Class Sec'y., 4;  
News Staff, 3, 4;  
Junior Play;  
Drama Club, 3;  
English Club, 4;  
Campuseer, Feature Editor.

### STATE LIMITED CERTIFICATE (2-Year Curriculum)

Bartanen, Beatrice Lillian  
Frankovich, H. Agatha  
Kallio, Helen Marie  
Nasberg, Ferne Claire  
Newman, Warren James  
Nicholas, Victoria Gertrude  
Norden, Roger L.

Planck, Betty Bernice  
Prichard, Melvin Merl  
Richards, Margaret Jane  
Strand, Eileen Sophia  
Strand, Mildred Elaine  
Suber, Kathryn S.  
Surline, Grace Eileen

Vinkemulder, Faye Elaine



## For Student Teachers Only

Subject: Northern State Teachers College.  
Topic: College Life.  
Type: Appreciation.  
Grades: Fresh—Seniors.

### MATERIALS

1. Six hundred sleepy students.
2. Two thousand unopened textbooks.
3. One much-used gym floor.
4. 8,274,946,062,052,001 polished apples.

### AIMS AND OBJECTIVES:

1. To attend four dozen socials, four junior proms, and as many sorority and frat parties as humanly possible.
2. To make the dirt columns of the college News bi-weekly.
3. To remain on excellent terms with the Placement Bureau.
4. To graduate.

### APPROACH

Now look here, guys and gals, you've enrolled and paid out your pappy's hard-earned greenbacks, and now you gotta go to college, so-o-o you might as well learn how.

### BODY

#### Method

I. What do you expect to gain from a college education?

II. In what courses do you plan to enroll?

III. Define these essential college terms:

1. Oomph.
2. Flunk slip.
3. Honor roll.
4. Apple polisher.
5. School spirit.
6. Technique.
7. Alcohol.
8. Stag line.
9. Minnie.
10. Brain trust.

#### Subject Matter

I. 1. knowledge of how to write home for money.  
2. Skill in burning the candle at both ends.  
3. Communistic attitude toward your roommate's property.  
4. Habit of putting off until tomorrow what you can do today.

II. 1. Creamland 101, 201, 301, 401.  
2. Ann-atomy 404.  
3. PenMANship 102.  
4. Theory of Play 104.  
5. Geography of Presque Isle 103.  
6. Principles of Social Education 204C.  
7. Technique of Destruction 305C.  
8. Problems of Preaching English 402.

III. 1. A feminine desirability that can be observed with pleasure but cannot be discussed with respectability.  
2. Mail to be ignored.  
3. For braintrusts only.  
4. One who rubs the faculty the right way and the student body the wrong way.  
5. ????  
6. Either you got it or you ain't.  
7. That which gives you a red nose, a white liver, a yellow streak, a dark brown breath, and a blue outlook.  
8. 98% of Northern's males.  
9. Not a mouse, not a girl, but the hang-out (hang-over for some).  
10. One who speaks in grammatically correct sentences.

### CONCLUSION

Thank heavens!! There goes the bell!!!!

Note: Be honest now, isn't this the type of lesson plan you've always wanted to write?





## Exerpts From the Diary of Nan Northern

Dear Diary:

I am about to begin what fictionists call "the four glorious years" (with the "the" pronounced as "thee", I imagine). College has suddenly become a reality—a reality with an ivy-covered exterior and a spanking clean interior ready for tomorrow's enrollment day rush. Northern.....college.....the "four glorious years".....

- Sept. 21, 1937 I didn't know the true meaning of fatigue until today.....one needs a preparatory course in business and finance in order to get enrolled in less than five hours. The one encouraging bit of the day was a headline in the issue of the News we received whilst enrolling—"Most Members of Senior Class Have Positions".
- Oct. 22-23, 1937 Bang-up Homecoming celebration—everything tops from the pep assembly Friday morning to Northern's 9-0 victory over Tech.
- Oct. 27, 1937 Much agitation over class elections with John Manthei—President, Rayner Johnson—Vice-President, Angeline Zenti—Secretary, and Jayne Peterson—Treasurer the resultant Freshman class of officers.
- Dec. 2, 1937 Sophomore prom 'mid lush Grecian setting—it must be an old college custom for the boys not to give us co-eds twenty-four hours' notice with their bids.
- April 22, 1938 Northern Brightlights—Nousiainen rolling them in the aisles with his "Nobody Loves a Fat Girl". (I firmly resolve hereafter to refuse all second servings of chocolate cake.
- April 29, 1938 Junior Prom carried out in schoolroom motif.
- June 9, 1938 Junior class play SPRING DANCE—gay, ultra-modern comedy of college life.
- June 3, 1938 Rush Day—yearlings prove superior much to chagrin of sophs.
- June 13, 1938 Senior Assembly—our illustrious seniors, with sublime faith in those career-making-and-breaking words "you ought to be in pictures", crash Hollywood.
- June 18, 1938 Commencement—temporary and permanent farewells.
- Sept. 20, 1938 Northern comes to life again. Campus seems greener than ever with an abundance of freshmen.
- Oct. 21, 1938 Homecoming—a repeat performance of Northern's last year's treatment of Tech with an additional four points to our margin of victory.
- Nov. 9, 1938 Northern's halls buzzing with politics. Sophomore class officers: George Cavender—President, John Wilsey—Vice-President, Helen Holman—Secretary, Mary Pasqualone—Treasurer.
- Dec. 7, 1938 Northernites revel 'mid arctic ice and snow at Sophomore Prom.
- Feb. 5-12, 1939 Winter Carnival—Margaret Miller crowned queen of Marquette, later extending her realm to the entire Upper Peninsula.
- Mar. 22, 1939 Thetas present Harlem jamboree—novel musical arrangements—guffaw-provoking gags—four-bell enjoyment.
- April 28, 1939 Record-breaking crowd promenades on deck of S. S. Northern at annual Junior Prom.
- May 29, 1939 "Fascist Follies"—farical take-off on European situation presented at Senior assembly.
- June 2, 1939 Frosh AGAIN defeat sophs in Rush Day activities.
- June 8, 1939 Superb performance of OUR TOWN by Junior class.
- June 17, 1939 Commencement—many familiar faces leave Northern's halls.
- Sept. 26, 1939 Another year of activity and achievement is begun.
- Oct. 19-20, 1939 Homecoming—midst a concerto of sneezes, coughs, and sniffles Tech is held to a scoreless tie.
- Nov. 2, 1939 November—the month of Indian summer, Big-Ten games, Friday night socials, and class elections. Ira Griffin—President, William Sargent—Vice-President, Virginia Butler—Secretary, and Donald Graham—Treasurer head the Junior class.



- April 19, 1940 "Mind, moral, and muscle" men give rollicking new version of their Brightlights. An evening of such entertainment makes me wonder if Tchaikovsky had the Tri Mu house in mind when he named his famous "Nutcracker Suite".
- June 3, 1940 Several members of Northern's faculty discover their doubles in the Senior assembly.
- June 6, 1940 THE GOOD HOPE, unforgettable tragedy of the sea, presented by all-school cast.
- June 15, 1940 Commencement—the closing of another chapter in the lives of many.
- Sept. 24, 1940 Enrollment Day—the beginning of the end for us seniors.
- Nov. 6, 1940 Independents organize against annual Tri Mu Delta coalition with the following results: Rupert Otto—President, George Gill—Vice-President, Doris Walker—Secretary, and Vivian Fadner—Treasurer.
- Nov. 8, 1940 Northern mourns death of President Webster Pearce.
- Dec. 4, 1940 Christmas spirit and class spirit promoted at informal Christmas party held for seniors.
- Dec. 17, 1940 Unexpected death of Superintendent Harry D. Lee seems irreplaceable loss to Northern.
- May 1, 1941 Senior Year Book goes to print—I had some remarkable contributions to offer, but all were rejected. For instance, I thought the list of activities beside the picture of each grad should contain more personal characteristics, such as—"John, 'Butch' Doe: could have been a Kappa Delt if he had attended class—excelled in radiator-leaning, Creamlanding, and library noise-making—twelve-letter man in sports, which is the reason all the coeds flocked around him, including me". And in the football section, as a picture of the best guard of the season—a resplendent picture of the National Guard; best tackle—a picture of the latest in fishing tackle; best fullback—the rear view of a shapely chorus girl, etc. And in the pictures illustrating the extracurricular activities; music—a picture of a magnificent shoehorn; track—a perspective view of a railroad track; dramatics—a photo of several premium hams, etc. Oh, well, I thought they were good ideas, but maybe I've been overworking this year.
- May 28, 1941 Two one-act plays, "Her Majesty the King" and "A Dull Evening", presented by the Junior class, provided a lively evening of entertainment.
- June 14, 1941 The grand finale! My sentiments as graduation neared were somewhat parallel to those expressed in that quip about sea-sickness, "First you're afraid you're going to die, and then you're afraid you're not going to"—first I was afraid I wasn't going to graduate, and then I was afraid I was. Life's just a whirligig.

Dear Diary:

I am now an alumna of Northern. During my four years I've experienced all the fun and gaiety of rushing parties, pasty feeds, socials, girls' get-togethers, rush days, football and basketball games; I've felt the more subdued enjoyment of lyceum programs, club meetings, concerts, and lectures; I've known nights of seemingly endless study, hurried moments of cramming, and the last-minute rush of term papers, reading cards, and reports; I've had the friendly intimacy of play practices, committee serving, and program planning; I've known the dry-tongued, rubber kneed sensation that accompanies practice teaching and your first interview; and I've known the nostalgic, lost feeling when at last you mount the platform to receive your degree which marks the end of your college days.....yes, they have truly been "four glorious years".....

Nan Northern





## Class Prophecy

The logical prophecy for a graduating class of a teachers' college is that they will all be happy, successful teachers. But you don't know Northern's class of 1941. Ten years hence we find.....

- Catherine Alexander..... Happily keeping house for a bunch of little negroes.
- Marjorie Alvord ..... "Charm"ing New York wth her annual art exhibit.
- John Anthony ..... Debating the immortal question "which came first, the chicken or the egg"?
- Elaine Asselin..... Her speech is now saturated with "wherebys" and "thereofs", and she refers to Joe as the "party of the first part".
- Mervin Baldrice..... Because of his French manner of speaking, he now occupies a teaching position in one of the country's leading deaf and dumb schools—'tis said that he deals with particularly stubborn pupils by bopping out the Morse Code on their noses.
- Clifford Bedore..... After all was said and done, decided to become a doctor as he already had his nurse.
- Arnold Behrsin..... After much rationalizing finally hung up his striped pole and opened a barber shop; his specialties are the following dual selections—shaves with the latest European news, and haircuts with the most recent developments in America's economic policy.
- Arthur Benoit..... Won a jitterbug marathon and has been offered a screen test.
- Walter Berge..... Breaking Huey Long's record for fillibustering.
- Lauren Blohm..... Steward at the Waldorf-Astoria upon recommendation from the Marquette Club.
- Ford Borema ..... Fooled everyone and became a high-pressure insurance salesman.
- Ruth Brotten..... Chief dietitian at Michael Reese Hospital in Chicago.
- Clyde Bucklin..... Now has a five-foot beard and has not come in contact with humanity for nigh unto nine years.
- Virginia Butler..... After a Long wait, is now flying high.
- George Cavender, Merle Clayton, Frank Paull, and George Gill..... Four-star leaders with their four-star orchestra making their debut at Carnegie Hall.
- Russell Christian..... Has reached a new height in teaching.
- Carl Dyster..... Society doctor dividing his time between Maxine and surgery.
- Nyla Elnes..... Her new laboratory is the subject of Paul de Kruif's latest book.
- Vivian Fadner..... Her Saginaw Sextet has just won the state championship in girls' basketball.
- James Findlay..... Has a decidedly "clinical" outlook on life.
- Leo Gendron..... On the road with his one-man show.
- Mary Ghiardi..... Posing for toothpaste ads.
- Donalda Graham..... Spending all her time with a little Jug.
- Hilmer Grantz and Clarence Magoon..... Co-authors of The Rise and Development of Vulgar English and have succeeded Jespersen as the leading authority in the field of grammar.
- Ruth Greene..... Making a comprehensive study of modern drama.
- Ira Griffin..... Has all the Delta notices and mail forwarded to him in order not to become homesick.
- Jack Griffin..... Writing his memoirs and at present is on page 801 and not quite through with his career at Northern.
- Gerald Grundstrom..... An up-and-coming Fuller Brush man.
- Viola Harris..... Has deserted the teaching profession for the business world.
- Imogene Harter..... Has discovered an anti-gravitation law and has been walking on air ever since.
- Frank Hartman and John Manthei..... Joint owners of a soda fountain in Hurley, Wis., —latest rumors have it that Franky and Johnny's business is in a state of bankruptcy.
- Elaine Hautala..... Is applying her mathematical mind to the balancing of the family budget.
- Nina Heilala..... A kinder kindergarten teacher has yet to be found.
- Martha Hintsala..... Much-in-demand lecturer for Women's Clubs.
- Helen Holman..... Happily married, 'nuff said.
- Clifford Jackson..... One of America's leading biologists.



## CLASS PROPHECY - Continued

- Evelyn Jewell..... Has exchanged her name for a jeweled ring.
- Andrew Johnson..... Proud proprietor of a Date Bureau.
- Helen Juntunen..... Subject of a new song hit "I Dream of Helen with the Light Blonde Hair".
- Charles Kee..... Has just completed a treatise "On the Molecular Composition of Carter's Little Liver Pills".
- Douglas Kell..... Has donated a portion of his second million to Northern's Tri Mus.
- Daisy Kilmer..... Is preparing her young son for Tech.
- Emil Koski..... Has returned to Northern to cure his insomnia.
- Donald Lahti..... Recently appointed architect for the building of Northern's Union Building.
- Olive Larson..... Now has two rings for her third finger left hand.
- Toivo Lauri..... Coach of the University of Michigan's track team.
- Elsie Leinonen..... Working on her Master's in education.
- Aili Leppanen..... Has written a Finnish saga equal to the Kalevala.
- Linnea Levine..... Is entirely wrapped up in her brown-eyed Susan.
- Allen Londo..... Is bringing home the bacon regularly.
- Gilbert Maienknecht..... Successor to Ollie Skratthult and has just returned from a triumphant tour of the European capitals with his Scandinavians.
- Viola Mattila..... Wrote a calculus book that became a best-seller.
- Ethel Miller..... Doing wonders in the commercial world.
- Margaret Miller..... Has opened a school for the training of winter queens.
- William Millman..... Hell-bent for the Brink.
- Lorraine Minzey..... Putting the masculine biologists to shame.
- Helen Moody..... Famous pianist.
- Warren Naber..... President Roosevelt's right hand man for the United States' good-naber policy.
- Katherine Newberg..... Writing a column "The Way to a Man's Heart" in which she displays her culinary knowledge.
- Frances Olivier..... Society leader of Escanaba's younger set.
- Rupert Otto..... Proud owner of an electric organ—patience triumphs over adversity.
- Lenwood Paddock..... Newly-appointed athletic director for Detroit public schools.
- Esther Paris..... Head librarian at Northern, letting 5:30 books go out at 5:00.
- Jayne Petersen..... Dean of Radcliffe and has been elected Radcliffe's campus queen for five successive years.
- Jack Rogers..... Regional advisor for the L. S. A.
- Albert Roman..... Will meet Joe Louis in his next bout—Northern students are laying odds four to one.
- Lorraine Ropelle..... Leading woman psychiatrist—Irving Menucci is said to be one of her most violent cases.
- Signe Samanen..... Popular commercial artist.
- William Sargent..... Efficiency expert.
- Clarice Sharron..... Successful dress designer.
- Kathryn Smolich..... Has compiled an anthology of short stories.
- John Sundquist..... Growing Sundquist oranges on his grove in Florida.
- Orlando Spigarelli..... Astrologist Spig predicts Hitler will invade England.
- Claire Steinbach..... Operating a girls' aviation school.
- Albert Tolonen..... Doing research work in the field of European history.
- Robert Voelker..... History prof at Notre Dame.
- Doris Walker..... Does anybody know what's become of Doris?
- Elsie Waters..... Has been awarded a medal for moving Creamland right smack on Northern's campus.
- Leonard West..... Is now majoring in acrobatics and floating through the air with the greatest of ease.
- Mary Williams..... Refused Northern head librarian position for a South American honeymoon with Bruce.
- Anna Wolfe..... Went down to Chicago for a week-end upon graduating and all that has ever been heard of her since was a postcard saying, "Having a Wonderful Time"!
- Manual Wolfe..... Ace news commentator—his latest reporting on Hitler's invasion of the North Pole has been done from a bomb-proof room in Santa Claus' workshop.
- Don Young..... Heralded as the second Hoagy Carmichael.

Author's note: Any similarity to persons living or dead is purely coincidental.





# Juniors



# Juniors

## OFFICERS

- Anderson, Alfred A.
- Anderson, Dorothy Arline
- Antilla, Miriam I.
- Arasim, Jack
- Armbrust, Angeline T.
- Bagley, Winifred I.
- Baldrice, Mervin R.
- Barker, Edgar C.
- Bassett, Stanley T.
- Bates, Miriam
- Belstrom, Jean C.
- Bennett, Marguerite F.
- Bennetts, Calvin R.
- Berquist, Judith H.
- Bisdee, Charles H.
- Bjorklund, Carl W.
- Borema, Ward F.
- Brink, Suzanne M.
- Bruyn, Josephine E.
- Burklund, Marie E.
- Byrns, Charles J.
- Carlson, Arline M.
- Carlyon, Stanley J.
- Cleereman, Bernice M.
- Cleminson, Norma C.
- Cunningham, Hinda W.
- Davis, Dwight R.
- Doyle, John
- Dunnebacke, Thaddea C.
- Dolf, Catherine C.
- Ekstrom, Wilhelmina T.
- Ellis, Ralph R.
- Flink, Lea Linnea
- Fraye, Harriette L.
- Frechette, Helen F.
- Fredrickson, Gereon R.
- Frei, Virginia A.
- Ghiardi, Dominic P.
- Goodman, Dorothy B.
- Gunville, Ralph L.
- Gronlund, Norman
- Hansen, Catherine M.
- Harris, James E.
- Heinonen, Ellen E.
- Hetherington, Francis F.
- Holman, Benjamin J.
- Hruska, Frances M.
- Haskins, Etha
- Jacisin, Frank A.
- Jarvenpaa, Viola E.
- Jennings, June
- Johansen, Frederick W.
- Johnason, Anne E.
- Johnson, Robert F.
- Jokela, Albert G.
- Joukainen, Theresa A.
- Kaariainen, Mae C.
- Kakkuri, Lalla E.
- Kela, Joel V.
- Kieper, Irene T.
- Kilpela, Ellen S.
- Knuth, Everett H.
- Konstenius, Florence E.
- Korpi, Arnold
- Kulju, John R.
- Laituri, Ruth M.



- Larson, Dorothy N.
- Laux, Ruth M.
- LeGolvan, Joseph V.
- Liiimatainen, Aili M.
- Lind, Alice L.
- Linbom, Glenn G.
- Lindstrom, Dorothy L.
- Lorell, Lester A.
- Lundberg, Mary C.
- McKenna, Gertrude T.
- MacDonald, Byron H.
- MacDonald, Jean G.
- Mahan, Mildred R.
- Maki, Edna J.
- Mantei, Cyril L.
- Martin, Mary Eliz.
- Matero, A. Eleanor
- Matonich, Ann T.
- Menghini, Clarence J.
- Menucci, Irving J.
- Miller, Berwick R.
- Mitchell, Harold V.
- Moore, Mary M.
- Niemi, Martin R.
- Nyquist, Albert W.
- Olds, Edwin B.
- Olson, Clara
- Olson, Helen E.
- Olson, Willis C.
- Orhanen, Taisto E.
- Paananen, Mildred A.
- Parker, Joseph M.
- Peterson, Marian E.
- Peterson, Marie L.
- Possi, Kathryn P.
- Pryal, Joseph F.
- Porter, Bonnie
- Quilliam, Leroy J.
- Ranger, Noel M.
- Rigoni, Marjorie L.
- Riippa, Saima L.
- Riordan, Mollie G.
- Rosenquist, Ferne C.
- Sayan, Clarence N.
- Schmeltzer, Herbert J.
- Schroeder, Marshall B.
- Sharp, Marjory Ann
- Slough, Norman W.
- Sohlberg, Helen M.
- Solka, Helen M.
- Stubbs, Donn S.
- Surline, Chester F.
- Sutter, Edwin J.
- Sharp, Dorothy
- Swan, Larry
- Trueman, Emily A.
- Valaske, Kathryn
- Vogelheim, Louise M.
- Walisiewicz, John J.
- Walton, John S.
- Weber, Patricia A.
- Welsh, Marie G.
- Wertanen, Mabel S.
- Whitman, Harold C.
- Winkel, Olive H.
- Young, Donald R.

Edwin Sutter

Miriam Bates

Dorothy Anderson

Lea Flink





## Sophomores

Anderson, Adele Marie  
 Anderson, George W.  
 Anderson, Glenn Louis  
 Anderson, Harold E.  
 Antonelli, Madeline M.  
 Austin, Ray J.  
 Bennett, Arthur K.  
 Becker, Loretta L.  
 Bennett, George C.  
 Berglund, Kaye M.  
 Berryman, John R.  
 Blomquist, Shirley E.  
 Breen, Marjorie  
 Buchkoe, Zita M.  
 Burak, Bernice  
 Cardinal, Mary Jean  
 Carpenter, Charles C.  
 Carriere, Virginia L.  
 Cote, Eleanore M.  
 Dagwell, Margaret G.  
 DeBruyn, Wm. Edward  
 DeVoe, John Herbert  
 Doan, D. Joyce  
 Donavon, Donald G.  
 Douglas, James L.  
 Edict, Glenn M.  
 Ehnerd, Mary Jane  
 Erdmann, Milton H.  
 Ericson, William A.  
 Erspamer, Gerald R.  
 Farley, Mary Ellen  
 Findlay, Betty Jane  
 Frankovich, H. Agatha  
 Fredeen, Minni J.  
 Freeman, Annette M.  
 Goodreau, Thelma  
 Grenfell, William J.  
 Hagberg, Florence H.  
 Hale, Madelyn M.  
 Hannula, Ralph E.  
 Hayden, Theodore F.  
 Hedgcock, Mary E.  
 Hedstrom, Helen N.  
 Hurd, Sharon L.  
 Ikkala, Albert A.  
 Jaeger, Betty A.  
 Johnson, Carol E.  
 Johnson, June E.  
 Johnson, Shirley Mae  
 Johnson, Virginia M.  
 Jory, E. Jane  
 Kallio, Helen M.  
 Karvakko, Anita  
 Kelly, Isabelle M.  
 Kepler, Margaret J.  
 Kepler, Mary Ann  
 Kirby, Marcia A.  
 Koskela, Ruth M.  
 Koski, Arthur E.  
 Koski, Harold R.  
 Krieg, Olin E.  
 Kruka, Edith W.  
 Lahti, Hugo E.  
 Lally, Mary L.  
 Lantto, Mary Jane  
 Lehouillier, Lucille B.  
 Liberty, Marion E.  
 Lyyski, Neil W.  
 Mackey, Leslie W.  
 Maki, R. Iona  
 Marks, Dorothy M.  
 Maynard, Grant S.  
 Menard, Mariann J.  
 Michelson, Esther E.  
 Mikkola, George W.  
 Mohrman, John H.  
 Morrison, Webster D.  
 Munn, Helen G.  
 Murr, Elizabeth A.  
 Morneau, Mary Ellen  
 Nasberg, Ferne C.  
 Nelson, Douglas J.  
 Neuman, Luella A.

### OFFICERS



Chauncey St. Germain

Harold Koski

Mary E. Hedgcock



## Sophomores



Newman, Warren J.  
 Nicholls, William W.  
 Niemi, Alfred O.  
 Nord, Franklin W.  
 Norden, Roger L.  
 Nurkala, Albert J.  
 Nyquist, Ralph A.  
 Olds, George  
 Olds, Marjorie N.  
 Olson, Elaine E.  
 Olson, Marvin Woodrow  
 Pangborn, Wayne D.  
 Parker, Keith O.  
 Paull, Henry Jr.  
 Pellow, John K.  
 Peterson, Ernest L.  
 Peterson, S. Virginia  
 Planck, Betty B.  
 Porter, George M.  
 Pritchard, Melvin M.  
 Pultz, Wallace K.  
 Peterson, Carl  
 Pritchard, Arthur L.  
 Ralph, Kenneth E.  
 Reinhardt, Mary Jane  
 Rice, Mary Ann  
 Richards, Margaret J.  
 Richardson, Jean H.  
 Rintala, Lillian I.  
 Ryan, Gaeney S.  
 Sadoff, Max  
 St. Germain, Chauncey J.  
 Sayles, Marjorie E.  
 Schmeltzer, Adeline H.  
 Schram, Robert J.  
 Sharron, Sylvia  
 Shesky, Zigmund S.  
 Siekkinen, Martha I.  
 Sikarsky, Ellen E.  
 Sivula, Tom E.  
 Smith, Barbara D.  
 Smith, Lillian J.  
 Smith, Mildred G.  
 Sonnanstine, Jean E.  
 Stanaway, Mary L.  
 Stefani, Bruno D.  
 Stindt, Mary L.  
 Strand, Eileen S.  
 Strand, Mildred E.  
 Suber, Kathryn S.  
 Surline, Grace E.  
 Swanson, Eugene D.  
 Sandell, Roland  
 Tallio, Effie H.  
 Talso, Peter J.  
 Theodore, Nicholas C.  
 Thomas, Clarence R.  
 Thomas, Francis H.  
 Thorpe, Marie F.  
 Toiviainen, J. Edwin  
 Trebilcock, Charles H.  
 Trepanier, Norman W.  
 Vadnais, Mary L.  
 Varti, Miriam M.  
 Verrette, John D.  
 Viant, Melvin L.  
 Villemure, Philip P.  
 Vinkemulder, Faye E.  
 Voght, Bettye J.  
 Walker, Robert A.  
 Wassberg, Arthur W.  
 Waters, Bernice H.  
 Wellner, Georgette M.  
 Williams, Jack  
 Wilson, Lorraine  
 Winter, Raymond D.  
 Wojciehowski, Chester  
 Wonders, Harry O.  
 Woodbridge, James F.  
 Wuori, Helen M.  
 Ylinoen, Helen I.  
 Zavodnik, Edward F.



# Freshmen



# Freshmen

## OFFICERS

Ahola, Betty E.  
 Aijala, Edward J.  
 Alexander, Henrietta L.  
 Alexander, Robert J.  
 Allen, Robert H.  
 Alvord, Marilyn R.  
 Amundsen, Betty Ann  
 Anderson, Elizabeth June  
 Anderson, Robert Lee  
 Antilla, Hazel E.  
 Asikainen, Henry  
 Bagley, Gwendolyn M.  
 Bant, David E.  
 Barry, Lawrence R.  
 Bauman, John L.  
 Beauchamp, Bobb F.  
 Beaudin, Jeanne O.  
 Beaudoin, Mercedes F.  
 Bedore, Priscilla J.  
 Belanger, Robert N.  
 Bennetts, Roger M.  
 Berbeck, Barbara F.  
 Bignall, Joan G.  
 Bonifas, Richard A.  
 Bordeaux, Dorothy H.  
 Borlace, Earl R.  
 Bottichio, Mary Pat  
 Bovan, Mary E.  
 Brotherton, Mary O.  
 Buck, Albert C.  
 Burklund, Edna M.  
 Burton, Robert M.  
 Cairns, Joyce A.  
 Callovini, Aldo Henry  
 Campbell, John F.  
 Cardew, Ray Warren  
 Carlson, Leona I.  
 Carlson, Leora I.  
 Carlson, Ruth E.  
 Cassidy, Samuel H.  
 Chapman, William C.  
 Check, John P.  
 Chrest, Russell A.  
 Conlogue, Agnes M.  
 Corey, Marian E.  
 Corlett, Merle Jean  
 Corneliuson, Corrine  
 Cowen, Beverly B.  
 Crawford, E. Bernice  
 Croisetiere, Marie V.  
 Culver, Jack R.  
 Danielson, Enid Marie  
 Davey, June A.  
 Delaney, Mary J.  
 Dennett, Edna Mae  
 Denomme, Walter G.  
 Derleth, Robert J.  
 DesJardins, Marigene  
 Desonia, Joseph L.  
 Devine, Betty Ruth  
 DeVoe, Jean  
 Dishnow, Francis J.  
 Drake, Ruth A.  
 Drury, David M.  
 DeHaas, Helen  
 Elliott, Patricia  
 Ellis, Nancy A.  
 Elmblad, Joyce M.  
 Engibous, James C.  
 Engman, Donald A.  
 Enwright, John C.  
 Erickson, Mae C.  
 Ernst, Marjorie M.  
 Eskil, Norma L.  
 Fitzpatrick, Jeanne C.  
 Fleury, Clement F.  
 Fredrickson, Adelyn A.  
 Frisk, Jack D.  
 Funkey, Allan F.  
 Gagnon, Francas J.  
 Garby, Carol G.  
 Gaspar, Patricia F.  
 Gelina, Robert H.  
 Gerard, Nicholas H.



Jack Frisk

Richard Bonifas

Corrine Corneliuson

Priscilla Bedore

Gerovac, Anne M.  
 Giuliani, Laraine P.  
 Goodney, John W.  
 Goudreau, Clinton L.  
 Greene, Carol K.  
 Grimes, Geraldine R.  
 Gursky, Elroy T.  
 Hakala, Alfred G.  
 Hanson, Marjorie Mae  
 Hanson, Ira W.  
 Hartrick, Doris Mary  
 Hatch, James M.  
 Hawes, Mary Jean  
 Hayward, Clyde R.  
 Hayward, Ruth M.  
 Hebert, Dorothy Ann  
 Heidenreich, Edna Mae  
 Hill, Raymond L.  
 Hill, Vernice M.  
 Hooper, Ward L.  
 Hudnall, Betty R.  
 Hudnall, Jack L.  
 Hamel, John Peter  
 Ihlenfeldt, Vernon F.  
 Jackson, Aleen L.  
 Johns, Irving R.  
 Johnson, Edward J.  
 Johnson, Eleanor R.  
 Johnson, Leonard P.  
 Johnson, Mary Agnes  
 Johnson, Robert D.  
 Johnston, Helen L.  
 Kangas, Wiljo R.  
 Kanney, Mary Jane  
 Karppinen, Florence  
 Kelly, Robert W.  
 Kenny, Gladys M.  
 Keto, Toivo T.  
 Kiiskila, Donald L.  
 Kincaid, Vance L.  
 Kirby, June D.  
 Kisor, June A.  
 Kivela, Effie M.  
 Kline, Frances F.  
 Korpi, Iris E.  
 Kotila, Paul M.  
 Krznarich, Matt P.  
 LaBerge, Kenneth J.  
 Lashbrook, Earl C.  
 LaVigne, Virginia M.  
 LeDuc, Barbara Jane  
 Lemieux, Idabelle M.  
 Lemin, Mary Virginia  
 Leonard, Rosemary  
 Lester, Janet M.  
 Lind, Kenneth W.  
 Lindeman, Henry E.  
 Lindeman, Robert L.  
 Lindstrom, Robert H.  
 Louko, Elna K.  
 Latvala, Leslie  
 McEachern, Douglas A.  
 McEachern, Neda H.  
 McIntyre, Gerald F.  
 Mallgren, Keith A.  
 Masek, Frank D.  
 Menhennick, William J.  
 Minelli, Ernest L.  
 Molby, John R.  
 Montcalm, Benedict W.  
 Nadeau, Joseph A.  
 Nadeau, Paul O.  
 Nault, Gerald A.  
 Nelson, Lee K.  
 Nelson, Robert L.  
 Nicholson, Nette A.  
 Nicolas, George J.  
 Niemela, Lauri J.  
 Niemi, Alice H.  
 Nikolsky, Tatiana  
 Olander, Eino R.  
 Olds, Betty Jean

(Continued on Page 95)







## *Independent Men's Association*

### OFFICERS

President .....	John Doyle
Secretary .....	Rupert Otto
Treasurer .....	Mervin Baldrice

### ADVISER

E. J. Howenstine

Organized in the fall of 1939, the I. M. A. provides college men who are not affiliated with a fraternity with a means by which they can participate in a wider range of collegiate activities, and satisfies a long felt need among unorganized independent men.

The I. M. A. makes no attempt to carry out the activity program of an organized fraternity, but does try to afford to independent men many of the opportunities which are open to fraternity men.

During 1940-1, the organization has been instrumental in fostering an interest in boxing, intra-mural basketball, and student government.

### MEMBERS

Werner Bjorklund	Gerald Grundstrom	Lee Nelson
Charles Carpenter	Clyde Hayward	Quentin Peterson
Russell Christian	Albert Ikkala	Melvin Prichard
Jack Culver	Frederick Johnson	Kenneth Ralph
Dwight Davis	Joel Kela	Max Sadoff
Milton Erdman	Robert Lindemann	John Sundquist
Dominic Ghiardi	George Mikkola	John Walisieewicz

Edward Zavodnik





## Kappa Delta Pi

### OFFICERS

President ..... Manual Wolfe      Treasurer ..... Donald Lahti  
 Vice-president ..... Daisy Kilmer      Secretary ..... Mary Ghiardi  
 Historian-reporter ..... Elaine Hautala

### ADVISER

Miss Maude Van Antwerp

The purpose of Kappa Delta Pi, an honor society in education, is "to encourage high intellectual and scholastic standards and to recognize outstanding contributions to education". The local chapter, Delta Zeta, was founded on June 1, 1935. Meetings are held twice monthly.

Beginning with 1939-40, the chapter each year presents an award to the student or students who, during their freshman year, have shown outstanding evidences of scholarship, leadership, and ability. This year two students, June Johnson, of Calumet, and Peter Talso, of Ishpeming, were the recipients of the awards, made at the regular Kappa Delta Pi assembly in the spring.

The program, a forum on current topics, featured talks by Arnold Behrsin, Virginia Frei, and Clarence Sayen, and a piano selection by Joseph Parker.

### MEMBERS

Catherine Alexander  
 Dorothy Jean Anderson  
 Arnold Behrsin  
 Werner Bjorklund  
 Bernice Cleereman  
 Wilhelmina Ekstrom  
 Lea Flink  
 Virginia Frei

Donalda Graham  
 Nina Heilala  
 Ruth Laituri  
 Dorothy Larson  
 Viola Mattila  
 Ethel Miller  
 Willis Olson  
 Joseph Parker

Jayne Petersen  
 William Sargent  
 Clarence Sayen  
 Helen Solka  
 Albert Tolonen  
 Mary Williams  
 Anna Wolfe



## Phi Epsilon

### OFFICERS

President ..... Clarence Sayen  
 Vice President ..... Bernice Cleereman  
 Secretary ..... Dorothy Larson  
 Treasurer ..... Edwin Sutter  
 Executive committee members ..... Lea Flink, Willis Olson

Phi Epsilon is an honor society which was organized in Northern State Teachers College in 1911, and is thus the oldest student organization on the campus. Students eligible for membership must have completed two full years of college work and maintained a "B" average.

The main activity of the society is an initiation and banquet held each year in the fall. Until recently it was customary to have a prominent educator speak at the banquet, giving what was called the "Phi Epsilon Address". The society hopes to renew this practice again in the future.

Mr. Brown has served the society as adviser since its organization.

### RESIDENT MEMBERS

Bates, Miriam  
 Bjorklund, Carl W.  
 Ekstrom, Wilhelmina  
 Frei, Virginia  
 Ghiardi, Mary  
 Graham, Donalda

Hautala, Elaine  
 Heilala, Nina  
 Kakkuri, Laila  
 Kilmer, Daisey  
 Lahti, Donald  
 Miller, Ethel  
 Wolfe, Manual

Paananen, Mildred  
 Parker, Joseph  
 Petersen, Jayne  
 Porter, Bonnie  
 Sargent, William  
 Williams, Mary





## Beta Omega Tau

(Founded April 1923)

### OFFICERS

President .....	Frances Olivier
Vice-president .....	Margaret Kepler
Secretary .....	Thaddea Dunnebacke
Treasurer .....	Catherine Alexander
Historian .....	Georgette Wellner

### ADVISER

Miss Ruth Craig

### PATRON AND PATRONESS

Mr. and Mrs. Gilbert Brown

### MEMBERS

Henrietta Alexander	Mary Jane Ehnerd	Betty Olds
Dorothy Jean Anderson	Carol Garby	Marjorie Olds
Jeanne Beaudin	Patricia Gaspar	Dorrine Peterson
Beverly Cowen	Catherine Hansen	Mary Jane Reinhardt
Marigene DesJardins	Mary Jane Kanney	Gaeney Ryan
Jean DeVoe	Rosemary Leonard	Jean Sonnanstine
	Betty Voght	

### PLEDGES

Barbara LeDuc	Mariann Menard	Phyllis Sundberg
---------------	----------------	------------------



## The Year

Shortly after the opening of college, a breakfast for alumnae members attending the MEA convention was held at the home of Mrs. Brown. The alumnae entertained active members and their guests at a buffet supper in the home of Mrs. Harvard Jean in the evening.

At the close of rushing season, fourteen girls were pledged at the annual dinner given by Mrs. Brown in her home.

In November, haystacks and cornstalks lent atmosphere to the "Beta Barn Ball", all school frolic in the gymnasium.

On December 7, active members entertained pledges at a pre-holiday dancing party in the John D. Pierce gymnasium.

The opening of the new semester was marked by the initiation and dinner-dance at the Theta Omicron Rho fraternity house.

April 4 was the date of the alumnae tea in the recreation rooms.

On Mothers' Day, mothers of members were honored at a tea.

The annual spring dinner dance, May 24, at the Northland Hotel closed the year's activities.





## Cegmer Seg

(Founded February 14, 1923)

### OFFICERS

President .....	Mildred Mahan
Vice-president .....	Adele Anderson
Treasurer .....	Shirley Johnson
Secretary .....	Ann Johnson
Corr. Secretary .....	Mildred Paananen

### ADVISER

Miss Evelain Archambault

### PATRONS AND PATRONESSES

Dr. and Mrs. Charles E. Clucas

### HONORARY

Dr. and Mrs. J. C. Bowman

### MEMBERS

Corrine Corneliuson	Helen Johnston	Mary Moore
Marjorie Alvord	Mary Jane Lantto	Tatiana Nikolsky
Patricia Elliott	Mary Louise Lally	Martha Siekkinen
Virginia Frei	Dorothy Lindstrom	Viola Vannberg
Carol Johnson	Dorothy Marks	Leona Vadnais



## The Year

Mrs. Clucas was welcomed as new patroness at one of the rushing season parties. Miss Archambault entertained.

Between semesters, a tea was held in honor of Elizabeth Warren, senior member, who left to reside in California.

The annual Christmas party at the home of Mrs. Clucas was the first event to follow the rushing season. Gifts were exchanged.

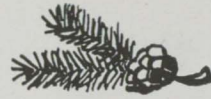
Another pre-holiday event was the pledge party held at the Theta Omicron Rho fraternity house.

In frigid January, the Cegs chose "Hawaiian Holiday" as the theme for the social evening in the gymnasium.

The new semester was inaugurated with the annual winter formal dinner and dance at the Northland Hotel on February 15. This was preceded by the initiation ceremonies in the home of Mrs. Clucas, at which eight pledges were inducted.

The spring formal was held at the Northland Hotel, May 31.





# Delta Sigma Nu

(Founded February 14, 1923)

## OFFICERS

President .....	Donalda Graham
Vice-president .....	Jayne Petersen
Secretary .....	Vivian Fadner
Treasurer .....	Margery Sharp
Historian .....	Norma Cleminson

## ADVISER

Miss Marian Ayres

## PATRONS AND PATRONESSES

Mrs. and Mrs. Forest Roberts      Mr. and Mrs. Luther West

## HONORARY PATRONESSES

Mrs. John Lowe      Mrs. J. E. Lautner

## MEMBERS

Miriam Bates	Mary Ann Kepler	Bonnie Porter
Priscilla Bedore	June Kirby	Mary Helen Rolan
Suzanne Brink	Marcia Kirby	Nissel Rosenbaum
Marie Burkland	Olive Larson	Sarah Rosenbaum
Virginia Butler	Mary Lemin	Dorothy Sharp
Dorothy Goodman	Jean MacDonald	Helen Sharpsteen
Mary E. Hedgcock	Margaret Miller	Mary Stanaway
Helen Holman	Luella Neuman	Mildred Thorsen
June Johnson	Jeannette Peterson	Miriam Vartti
Virginia Johnson	Marian Peterson	Doris Walker

## PLEDGES

Anna Wolfe    Mary Pat Bottichio    Mary Jean Hawes    Effie Kivela



## The Year

The rushing season was featured by a carnival, several camp parties, a progressive dinner, and a buffet supper at the Northland Hotel. On October 28, eighteen girls were pledged.

October also saw the annual all-school party in the gymnasium.

Early in December, pledges entertained members at the traditional party in the Theta Omicron Rho fraternity house.

Fall semester activities concluded with the faculty tea in the recreation rooms on January 20.

On March 3, thirteen pledges were initiated and the following week-end, the annual Founders' Day banquet and formal dance were held at the Northland Hotel.

Later the same month, Mrs. Lautner and Mrs. Roberts were hostesses at a tea for the sorority in the Lautner home.

The spring formal at the Northland Hotel on May 17 wrote "Finis" to another year's program.





# Gamma Phi Alpha

(Founded February 6, 1928)

## OFFICERS

President .....	Elaine Hautala
Vice-president .....	Irene Kieper
Secretary .....	Joyce Cairns
Treasurer .....	Harriet Frayer
Corr. Secretary .....	Lea Flink

## ADVISER

Miss Lucile Payne

## PATRONS AND PATRONESSES

Mr. and Mrs. L. O. Gant	Dr. and Mrs. L. H. Halverson
-------------------------	------------------------------

## MEMBERS

Wilhelmina Ekstrom	Katherine Newberg	Sylvia Sharron
Marjorie Hanson	Elaine Olson	Helen Sohlberg
Viola Harris	Shirley Peterson	Eileen Strand
June Jennings	Clarice Sharron	Mildred Strand
	Bernice Waters	



## The Year

Alumnae attending the MEA convention early in October were guests at the year's first social event, a tea in the Beyer residence, on Front street.

The rushing season was also featured by a Hallowe'en ghost party at the Gant home.

On October 30, seven girls took the Gamma pledge in ceremonies in the recreation rooms.

The "Little Red Schoolhouse" social evening, early in November, was a pronounced success.

The annual Christmas party at the Gant residence, at which patronesses and pledges entertained members topped off the 1940 calendar.

At the Washington's Birthday dinner and dance in the Theta Omicron Rho fraternity house, pledges were ushered into full membership. The sorority's anniversary was also observed.

May 5 brought forth the annual publication, Gamma Gazette.

The customary May formal at the Northland Hotel with music by Kenny LaBerge's orchestra, rang down the curtain on the year's activities.





## Phi Kappa Nu

(Founded January 27, 1926)

### OFFICERS

President .....	Linnea Levine
Vice-president .....	Jean Richardson
Secretary .....	Edith Kruka
Treasurer .....	Edna Maki
Corr. Secretary .....	Jean Belstrom

### ADVISER

Miss Ethel Griswold

### PATRON AND PATRONESS

Dr. and Mrs. R. A. Williams

### MEMBERS

Mary Jean Cardinal	Lily Hivala	Margaret Richards
Lorraine Guilliani	Anita Karvako	Marjorie Sayles
Madelyn Hale	Ruth Koskela	Phyllis Villemure
Vernice Hill	Ferne Nasberg	Lorraine Wilson

### PLEDGES

Frances Hruska      Esther Michelson



## The Year

Feature attraction on the first semester's program was the annual Kappa Koronation all-school party at which the student body's choice for King and Queen were officially enthroned.

This year's honors went to Miss Jayne Petersen, a senior, and Ralph Gunville, a junior. The royal couple were coronated by President Linnea Levine, before a large crowd.

The Christmas dinner and dance marked the final event on the 1940 activity program.

Academic interests occupied members during the last busy weeks of the semester, whose conclusion brought with it, the yearly dinner dance at the Northland Hotel.

The spring formal at the Northland Hotel and the customary sorority breakfast rounded out the season.





## Tau Pi Nu

(Founded February 6, 1928)

### OFFICERS

President .....	Lorraine Ropelle
Vice-president .....	Esther Paris
Secretary .....	Dorothy Anderson
Treasurer .....	Dorothy Larson
Corr. Secretary .....	Gertrude McKenna

### ADVISER

Miss Vera Haven

### PATRONS AND PATRONESSES

Mr. and Mrs. Earl Ferns      Mr. and Mrs. G. C. Meyland

### HONORARY MEMBER

Miss Olive Fox

### MEMBERS

Dorothy Anderson	Nyla Elnes	Peggy McCabe
June Anderson	Norma Eskil	Gertrude McKenna
Elaine Asselin	Agatha Frankovitch	Esther Paris
Shirley Blomquist	Mary Ghiardi	Kathryn Possi
Edna Burklund	Edna Mae Heidenreich	Rosemary Robert
Arline Carlson	Daisy Kilmer	Lorraine Ropelle
Bernice Cleereman	Dorothy Larson	Barbara Smith
Mary Delaney	Betty Martin	Grace Surline
	Kay Valaske	



## The Year

Seven girls were pledged at a fall buffet supper in the home of the patroness, Mrs. Earl Ferns at the close of rushing season. The pledges, in turn, entertained at a dancing party in the pine-covered gymnasium on November 30.

One of the most novel and delightful of the fall social evenings was the sorority's "Sadie Hawkins Party".

Last event before Christmas was a party given by Mrs. Meyland in her home at which gifts were exchanged.

Patriotism was the theme of the winter dinner dance at the Northland Hotel on February 14.

A month later, the faculty women were entertained at a St. Patrick's tea.

Another annual feature was the program for patients at Morgan Heights Sanatorium. The theme was "America, Melting Pot of Nations", and selections depicting the various nationalities were presented.

The spring dinner dance at the Northland Hotel brought the year's activities to a close.





## Theta Omicron Rho

(Founded 1914)

### OFFICERS

President .....	George Porter
1st Vice-president .....	George Bennett
2nd Vice-president .....	John DeVoe
Secretary .....	John Verrette
Treasurer and Steward .....	Harry Wonders
Sgt.-at-Arms .....	James Harris

### ADVISER

Earle M. Parker

### HONORARY MEMBERS

Dr. D. S. Garby	Mr. Rollin Thoren
Mr. H. B. Ebersole	Mr. James E. Jopling

### MEMBERS

Edgar Barker	Robert Moore	Joseph Parker
Arthur Bennett	Webster Morrison	Ernest Peterson
James Douglas	Lawrence Negro	Wallace Pultz
Harold Koski	Warren Newman	Roland Sandell
Olin Krieg	Alfred Niemi	Norman Skytta
Hugo Lahti	Ralph Nyquist	Norman Trepanier
Byron MacDonald	Marvin Olson	Melvin Viant
Grant Maynard	Frank Paull, Jr.	Robert Walker
	Leonard West	Michael Wienczek



## The Year

Theta Omicron Rho began the year 1940-1 heavily depleted by graduation, and the call for soldiers and fliers. Out of over forty members last year, twenty returned in the fall.

Theta Omicron Rho exists to give its members a home and the advantages of such social activities as that home makes possible. The house is a busy place where college work, ping pong, bowling, and tennis, in season, make the weeks seem short. Almost every week has found some extra activity to fill in afternoon or evening.

The chapter were guests of their adviser, Mr. Parker, at Thanksgiving dinner on November 22, and the preceding Friday evening the fraternity entertained the student body at a Thanksgiving party, from which the fortunate guests carried off a pig, a turkey, a duck, and a chicken.

The last Sunday before Christmas 70 members and friends welcomed President Tape at a dinner served at the fraternity house.

The house would not seem natural without the annual Christmas party where crackling hearth fires, Christmas greens, colored lights, a tree, and a package for everyone are the order of the evening.

The annual Dinner Dance in June closed another college year, which has been happy and satisfying as another successful chapter of progress.





## Tri Mu

(Founded December 19, 1923)

### OFFICERS

President .....	John Manthei
Vice-president .....	Ralph Ellis
Secretary .....	Norman Slough
Treasurer and House Mgr. ....	Arthur Benoit
Corr. Secretary .....	Gilbert O. Maienknecht
Sgt.-at-Arms .....	Douglas McEachern
Advisers .....	Roy M. McCollom, Gilbert L. Brown
Honorary Members .....	G. C. Meyland, Dr. Glenn Blackburn

### MEMBERS

Robert Allen	Gerald Erspamer	Emil Koski	Willis Olson
George Anderson	Jack Frisk	Arthur Koski	Wayne Pangborn
Harold Anderson	Allan Funkey	Paul Kotila	Harold Peasley
Robert Beauchamp	Francis Gagnon	Everett Knuth	John Pellow
Clifford Bedore	Robert Gelina	Matt Krznarich	Joseph Puhek
Walter Berge	Clinton Goudreau	Earl Lashbrook	Jack Rogers
Charles Bisdee	Norman Gronlund	Toivo Lauri	Chauncey St. Germain
John Bittner	Ralph Gunville	Allen Londo	Clarence Sayen
Richard Bonifas	Elroy Gursky	Gerald McIntyre	Zigmund Shesky
Robert Burton	Ira Hanson	Douglas McEachern	William Sormunen
Charles Byrnes	Frank Hartman	Clarence Menghini	Orlando Spigarelli
Martin Crampton	Francis Hetherington	Irving Menucci	Francis Thomas
John Check	Lloyd Holmes	Benjamin Montcalm	Charles Trebilcock
Edward DeBruyn	Andrew Johnson	Franklin Nord	Philip Villemure
Joseph Desonia	Robert Johnson	Albert Nurkala	John Walton
James Engibous	Douglas Kell	Edwin Olds	Arthur Wassberg

Chester Wojciehowski

### ASSOCIATED MEMBERS

Ira Griffin

Hilmer Grantz

### PLEDGES

John Bauman

Aldo Callovini

Vernon Ihlenfeldt



## The Year

Three smokers were held during the fall semester to acquaint new men with the fraternity. Sometime before Christmas, pledging ceremonies were held, and a dance followed in the college gymnasium, the first time the organization had sponsored such a feature.

At the opening of the spring semester, initiation took place in the college gym. During the banquet which followed the ritual, members had their first opportunity to meet the new president, Dr. Tape. A dance climaxed a thoroughly enjoyable evening.

The year's biggest event, the spring dinner-dance, established a precedent, the gala affair being held in the gymnasium instead of a downtown hotel as was the custom in previous years.





### Social Science Club

#### OFFICERS

President—Douglas Kell      Secretary—Mae Kaariainen  
Adviser—E. J. Howenstine

#### MEMBERS

Robert Anderson    Milton Erdmann    June Johnson    Donald Masek    Max Sadoff  
Alice Bonefeld    Harriet Frayer    Anita Karvako    Mollie Riordan    Helen Ylinen  
Charles Byrnes    James Hatch    Lucille Lehouillier    Sarah Rosenbaum

### Geography Club

#### OFFICERS

President—Clarence Sayen      Vice-president—Jack Rogers  
Secretary-treasurer—Virginia Butler  
Advisers—Dr. L. H. Halverson, Roy M. McCollom

#### MEMBERS

Angeline Armbrust    Wilhelmina Ekstrom    Theresa Joukainen    Marcia Kirby    Esther Paris  
Clyde Bucklin    Hilmer Grantz    Virginia Johnson    Elna Lauko    Virginia Peterson  
Mrs. Catherine Delf    Marie Hartman    Irene Kieper    Linnea Levine    Clifford Rajala  
Mary Stanaway    Claire Steinbach



### Minervan Debating Society

#### OFFICERS

President—Bernice Burak      Secretary—Dorothy Hebert  
Vice-president—Aili Leppanen      Treasurer—Ethel Miller  
Adviser—Miss Lena Durboraw

#### MEMBERS

Mercedes Beaudoin    Wilhelmina Ekstrom    Lily Hivala    Viola Mattila    Signe Samanen  
Jean Cardinal    Harriet Frayer    Mae Kaariainen    Lorraine Minzey    Marjorie Sayles  
Arlene Carlson    Annette Freeman    Daisy Kilmer    Victoria Nicholas    Effie Tallo  
Marion Corey    Ellen Heinonen    Anita Karvako    Alice Niemi    Helen Ylinen

### Forum Society

#### OFFICERS

President—Lea Flink      Secretary—Barbara Smith  
Vice-president—Mabel Wertanen      Treasurer—Dorothy Anderson  
Adviser—Miss Mildred Magers

#### MEMBERS

Catherine Alexander    Virginia Carriere    Elaine Hautala    Gertrude McKenna    Kathryn Possi  
Henrietta Alexander    Bernice Cleereman    Helen Holman    Helmi Ollila    Mabel Roberts  
Marjorie Alvord    Vivian Fadner    Betty Martin    Esther Paris    Lorraine Ropelle  
Claire Steinbach    Phyllis Villemure    Anna Wolfe





## Industrial Arts Club

### OFFICERS

President ..... Emil Koski  
 Vice-president ..... James Findlay  
 Secretary-treasurer ..... Albert Roman

### ADVISERS

Earl A. Ferns                      Wayne B. McClintock

The object of the Industrial Arts Club is the promotion of the welfare and interests of the Industrial Arts department and the students enrolled therein. The membership is composed of students who are pursuing a major or a minor in the Industrial Arts Curriculum. All graduate alumni who have completed a major or a minor in the industrial arts curriculum are honorary members.

The club aims to promote and develop a professional attitude and to increase general knowledge of industrial processes.

The programs consist of individual talks and panel discussions by members of the club concerning the Industrial Arts field. Occasionally distinguished men from outside the school address the group. Field trips to industrial plants also supplement class work.

The club holds a social and a picnic during the school year.

### MEMBERS

Aijala, Edward	Gelina, Robert	Latvola, Leslie	Peterson, Ernest
Anderson, George	Gerard Nicholas	Mantei, Cyril	Peterson, Quentin
Bant, David	Grenfell, William	McEachern, Douglas	Puhek, Joe
Bauman, John	Gursky, Elroy	Menghini, Clarence	Pultz, Wallace
Benoit, Arthur	Holman, Benjamin	Menucci, Irving	Rova, Adolph
Borlace, Earl	Ihlenfeldt, Vernon	Mikkola, George	Sargent, William
Burton, Robert	Johnason, Frederick	Minelli, Ernest	Swanson, Eugene
Cardew, Ray	Johnson, Edward	Naber, Warren	Toiya, Waino
Desonia, Joe	Kellan, Norman	Niemi, Martin	Trebilcock, Charles
Dishnow, Francis	Keto, Theodore	Nord, Franklin	Villa, Vincent
Engman, Donald	Kiiskila, Donald	Nyquist, Albert	Walisiewicz, John
Erickson, William	Koski, Arthur	Olson, Marvin	West, Leonard
Funkey, Allan	Lahti, Donald	Orhanen, Taisto	Wienczek, Michael



## Lutheran Students' Association

### OFFICERS

#### FIRST SEMESTER

#### SECOND SEMESTER

President ..... Arline Carlson	Arline Carlson
Vice-president ..... Linnea Levine	Effie Tallio
Secretary ..... Adeline Schmeltzer	Ellen Heinonen
Treasurer ..... Eileen Strand	Ward Goodney

### ADVISER

Miss Martha Cooley

The L. S. A. is an organization designed to promote the social, cultural, and spiritual interests of students of Lutheran faith. A national association, the local unit was established over five years ago.

Highlights of this year's activities was the installation dinner held March 10 at which the guest speaker was Miss Hortense Hage, the Association's national adviser. Approximately 60 students attended the banquet.

In November, following the Thanksgiving dinner, the annual carnival for all students was held in the gymnasium. Officers called it one of the most successful in recent years.

Winter events included a skating party and a birthday fete in February. Organized activities terminated with the sunrise breakfast in May.





N  
a  
u  
a  
h  
a  
m  
a



C  
l  
u  
b

**OFFICERS**

President—Katherine Newberg  
Secretary—Ellen Sikorsky  
Adviser—Mrs. Ruby Richey  
Vice-president—Ruth Brotten  
Treasurer—Dorothy Anderson  
Honorary Member—Miss Bemis

**MEMBERS**

Jane Anderson	Virginia Frei	Florence Karppinen	Heleln Olson	Sylvia Sharron
Merle Corlett	Anne Gerovac	Barbara LeDuc	Shirley Peterson	Mildred Smith
Marigene DesJardins	Florence Hagberg	Mary Lemin	Jayne Petersen	Jean Sonnanstine
Jean DeVoe	Catherine Hansen	Margaret McCabe	Anna Quinlan	Viola Vannberg
Thaddea Dunnebacke	Marjorie Hansen	Marjorie Olds	Mary Rolan	Ina Wickstrom
Mae Erickson	Mary Jean Hawes	Helmi Ollila	Dorothy Sharp	Evelyn Williamson
Lea Flink	Aileen Jackson	Elaine Olson	Clarice Sharron	Olive Winkel

**OFFICERS**

President—Daisy Kilmer  
Secretary—Helen Moody  
Adviser—Miss Olive Fox  
Vice-president—Nina Heilala  
Treasurer—Olive Larson

**MEMBERS**

Betty Ahola	Mary Jane Ehnerd	Martha Hintsala	Betty Martin	Gaeney Ryan
Dorothy Alvord	Vivian Fadner	Theresa Joukainen	Gertrude McKenna	Aili Sarkela
Dorothy Anderson	Helen Frechette	Helen Kallio	Esther Michelson	Kathryn Smolich
Elaine Asselin	Carol Greene	Ruth Laituri	Ferne Nasberg	Effie Tallio
Beatrice Bartanen	Marie Hartman	Elsie Leinonen	Marian Peterson	Viola Vannberg
Norma Cleminson	Ruth Hayward	Alice Lind	Marie Peterson	Evelyn Veale
Peggy Dagwell	Dorothy Hebert	Iiona Maki	Saima Riipa	Mary Williams

K  
i  
n  
d  
g  
t  
n



P  
r  
i  
m  
a  
r  
y



A  
r  
t



C  
l  
u  
b

**OFFICERS**

President—Edna Maki  
Vice-president—Miriam Bates  
Adviser—Miss Nadia Thorpe  
Secretary-treasurer—Leonard Johnson  
Historian—Babara Smith

**MEMBERS**

Marjorie Alvord	Nancy Ellis	Daisy Kilmer	Byron MacDonald	Jeannette Smith
Miriam Antilla	Leo Gendron	Effie Kivela	Esther Michelson	Nicholas Theodore
George Bennett	Mary E. Hedcock	Virginia LaVigne	Noel Ranger	Leona Vadnais
Patricia Elliott	Helen Johnston	Aili Liimatainen	Signe Samanen	Miriam Varti
	Mary Williams	Lorraine Wilson		

**OFFICERS**

President—Dorothy Lindstrom  
Vice-president—Ruth Laux  
Associate—Miss Ruth Craig  
Secretary-treasurer—Frank Paull  
Adviser—Dr. Roy A. Williams

**MEMBERS**

Adele Anderson	George Cavender	George Gill	George Nicolas	Ed Ramberg
Dorothy Jean Anderson	Merle Clayton	Irving Johns	Lauri Niemela	Marjory Sharp
Edna Burklund	Hinda Cunningham	Idabelle Lemieux	Eino Olander	Helen Sharpsteen
Marie Burklund	John DeVoe	Betty Martin	Rupert Otto	Noel Ranger
Arline Carlson	Mary Jane Ehnerd	Betty Murr	Joseph Parker	Peter Talso
	Audrey Trevarthen	Kay Valaske	Bernice Waters	Patricia Weber

M  
u  
s  
i  
c



C  
l  
u  
b





## Newman Club

### OFFICERS

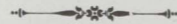
#### FIRST SEMESTER

President—Herbert Schmeltzer  
 Vice-president—Irving Menucci  
 Secretary—Kathryn Possi  
 Corr. Secretary—Irene Kieper  
 Treasurer—Margaret McCabe  
 Program Chmn.—Norman Trepanier

#### SECOND SEMESTER

Irving Menucci  
 Jack Frisk  
 Kathryn Possi  
 Gertrude McKenna  
 Irene Kieper  
 Robert Kelly

Chaplain—Fr. Robert Cardy  
 Adviser—Miss Frances Herald



The Newman Club is composed of Catholic students endeavoring to promote Catholic culture and fellowship. The national organization was formed in 1915 and the unit at Northern was inaugurated in 1926.

Members meet once monthly in the recreation rooms for business meeting, program, and lunch.

During the first semester a banquet and initiation of new members was held in St. Peter's Cathedral. A skating party at the Baraga rink followed.

On May 9, the annual spring social evening was held in the college gymnasium and the year was concluded with a communion breakfast in the cathedral hall.



## Wesleyan Guild

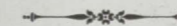
### OFFICERS

President ..... John DeVoe  
 Vice-president ..... June Jennings  
 Secretary-treasurer ..... Marguerite Bennett

The Wesleyan Foundation was founded in 1925, its purposes being to care for the moral and spiritual welfare of students at Northern, particularly those of Methodist faith.

The Foundation functions through the various church organizations, but has centered its attention on the students' Sunday morning Bible classes at 9:45 and the Wesleyan Guild session at 5 o'clock every Sunday afternoon.

The Guild sponsors a varied program of speakers, musical features, and social activities for students. The national organ of the Foundation, "Motive", made its first appearance in February. It is published by the Methodist Board of Education.



### COMMITTEES

Devotional—Imogene Harter, chairman      Aleen Jackson, Virginia Butler, Mabel Roberts  
 Program—June Jennings, chairman      Mary Ann Gregory  
 Membership—Warren Newman, chairman  
 Lois Burns, Ferne Nasberg, Willard Peterson  
 Publicity—Jayne Petersen, chairman





C  
a  
m  
e  
r  
c  
i  
a  
l



C  
l  
u  
b

**OFFICERS**

Adviser—C. C. Wiggins

**FIRST SEMESTER**

President .....	Margaret Miller	.....	Dominic Ghiardi
Vice-president .....	Dominic Ghiardi	.....	Mary Ghiardi
Secretary .....	Reno Norell	.....	Viola Harris
Treasurer .....	Frances Olivier	.....	Ethel Miller

**SECOND SEMESTER**

President .....	Margaret Miller	.....	Dominic Ghiardi
Vice-president .....	Dominic Ghiardi	.....	Mary Ghiardi
Secretary .....	Reno Norell	.....	Viola Harris
Treasurer .....	Frances Olivier	.....	Ethel Miller

**MEMBERS**

Jack Arasim	Mrs. Minni Fredeen	Frank Jacisin	Aili Leppanen	Leroy Quilliam
Clement Fleury	Alfred Hakala	Clifford Jackson	Rosemary Leonard	Mollie Riordan
	Herbert Schmeltzer	Arthur Wassberg	Edward Zavodnik	

**OFFICERS**

President—Melvin Viant Vice-president—Werner Bjorklund

Secretary-treasurer—Viola Mattila  
Advisers—C. C. Spooner, O. F. Mattson

**MEMBERS**

John Anthony	Richard Bonifas	Samuel Cassidy	Gerald Grundstrom	Jack Hudnall
George Bahrman	Stanley Carylon	Glen Edict	Cornelius Hamel	Zigmund Shesky

M  
a  
t  
h  
e  
m  
a  
t  
i  
c  
s



C  
l  
u  
b



E  
n  
g  
l  
i  
s  
h



C  
l  
u  
b

**OFFICERS**

President—Edith Kruka Vice-president—Lily Hivala  
Secretary—Viola Jarvenpaa Treasurer—Rupert Otto  
Adviser—Dr. Russell Thomas

**MEMBERS**

Alfred Anderson	Mary Jean Cardinal	Helen Juntunen	Mary Moore
Angeline Armbrust	Hinda Cunningham	Joel Kela	Marjorie Sayles
William Beckerleg	Donalda Graham	Elsie Leinonen	Helen Munn
Mary Brotherton	Elaine Hautala	Lester Lorell	Doris Walker

**OFFICERS**

President—Leo Gendron Vice-president—William Beckerleg  
Secretary-treasurer—Ruth Koskela Adviser—Forest Roberts

**MEMBERS**

Alfred Anderson	Carol Garby	Ira Griffin	Mary Moore	Dorrine Petersen
Ruth Brotten	Mary Ghiardi	June Johnson	Warren Newman	Jayne Petersen
Lois Burns	Ruth Greene	Mildred Mahan	Roger Norden	Herbert Schmeltzer
	Mildred Smith	James Woodbridge	Doris Walker	

D  
r  
a  
m  
a



C  
l  
u  
b





P  
h  
y  
E  
d



C  
l  
u  
b

**OFFICERS**

President—Lenwood Paddock  
 Secretary-treasurer—Wayne Pangborn  
 Vice-president—Harriet Frayer  
 Advisers—Miss Ayres, Miss Stokke, Mr. Hurst, Mr. Hedgcock

**MEMBERS**

Harold Anderson	Aldo Callovini	Clyde Hayward	Idabelle Lemieux	Edwin Olds
Ray Austin	Russell Christian	Francis Hetherington	Robert Lindeman	Kathryn Possi
Richard Bonifas	Ralph Ellis	Mae Kaarlainen	William Millman	Jean Richardson
Suzanne Brink	Vivian Fadner	Mary Jane Kanney	Margaret McCabe	Marshall Schroeder
Gwendolyn Bagley	Jack Frisk	Everett Knuth	Benedict Montcalm	Norman Slough
Joyce Cairns	Frank Hartman	Earl Lashbrook	Paul Nadeau	Chauncey St. Germain
		Philip Villemure		

**OFFICERS**

President—Arthur Benoit  
 Secretary—Gilbert Maienknecht  
 Vice-president—Quentin Peterson  
 Treasurer—Nyla Elnes  
 Adviser—Dr. Luther S. West

**HONORARY MEMBERS**—Mr. George S. Butler, Dr. Leita Davy, Mr. Rollin K. Thoren

**MEMBERS**

Ford Borema	Carl Dyster	Francis Hetherington	Reynald Kulju	Lorraine Minzey
Charles Carpenter	Gerald Erspamer	Clifford Jackson	Allen Londo	Alfred Niemi
John Doyle	Imogene Harter	Charles Kee	Clarence Menghini	Lenwood Paddock
	Adolph Rova	Peter Talso	Larry Swan	

C  
a  
m  
b  
i  
u  
m



C  
l  
u  
b



**ATHLETICS**

The early settlers who came to the Upper Peninsula found their recreation in the natural life of the country. Fishing in the numerous streams and inland lakes, hunting the abundant wildlife of the area, and skiing and snowshoeing on the snow clad hills were sports of the lumberjack, miner, and farmer. These activities have carried over to the present day as sports form the basis for our growing recreation industry. In addition, we have added the numerous present-day sports which have grown up about our educational and recreational institutions. The building of strong bodies, inculcating the ideals of true sportsmanship, and healthy means of recreation, are as important in the present day as they have been through the ages.



To "Cats" L  
Form In  
"Kits" Lac



ld-Fa  
ing A



before a nea  
night, this  
and Gold Wild



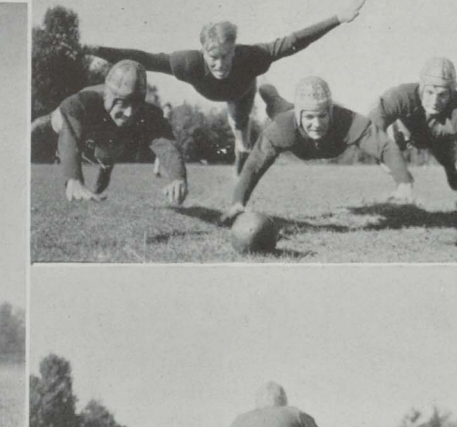
season bre  
the la  
defensive  
The Alagni  
stars as Joe D



ain, who  
by Anders  
things to  
cellent hip  
ages and  
season for  
as the initi  
mi to file to  
before a nea  
night, this  
and Gold Wild

city tim  
to the  
boys  
high  
point  
them  
the sp  
ed fin

ough and N  
Shman, play  
for the Wi  
Victory



G. MAIENKNECH  
PILOTS MU T  
TO 20 VI

ately 60  
6 Teams  
Honors

DRAFT GETS 12  
ATHLETES  
YEAR'S





## Athletic History

If one would have chanced to pass the Northern State campus in the year 1905, the following cheer would have caused his membrana typani to vibrate: Hullabaloo, hoorah! Hoorah, Normal, Rah! Rah! Rah! That year marked the entry of Northern into the athletic world (that is, as far as present records indicate). It was at that time that football and baseball made their debuts at the Wildcat institution, under the tutelage of Coach Estrich.

The year 1906 found basketball introduced under Mr. Estrich. The adoption of basketball caused the elimination of competitive baseball until the years 1928 and 1929 when it was resumed under Northern's present coach, R. Victor Hurst. Baseball has never caught the lasting favor of Northern students, and so today it appears under the heading of intramural athletics.

In 1908-09 Normal's athletic fortunes were placed in the charge of one Dr. Hebb, a member of the faculty who replaced Mr. Estrich. But friends, don't let anyone kid you by saying the team "wasn't much" for the basketeers of old '08 and '09 rang up 11 wins in comparison to only 4 losses. Records reveal that there were only eight men enrolled in basketball during the season which began in early November.

Did they have a football team in 1908-09? Twenty-two men were enrolled in contrast to the basketball squad's eight.

And the women in "them thar" days weren't to be slighted either for they boasted of a spanking good basketball team.

In 1910, DeForest Stull, geography instructor at the school, inherited the pilot seat. The Stull regime proved a lean one in athletics for Normal, lack of material causing a suspension of both football and basketball during the years 1913 to 1916.

The year 1916 brought forth Wayne B. McClintock, now head of the Industrial Arts Department. Mr. McClintock guided the fortunes of the Olive and Gold until 1919 when Luther O. Gant, present Registrar of the college, took over the helm.

In 1922, C. B. Hedgcock, present director, took over full command of Northern State athletics. In 1925, R. Victor Hurst joined Mr. Hedgcock as co-pilot of Northern's athletic destinies.

Under their guidance Northern's stock has boomed abundantly. Athletics have undergone an evolutionary process and a headline that once read "Normal Defeated 23 to 3 by Munising Y. M. C. A", has changed to "Northern Marksmen Win 45-40 Victory over Hurons". And so a school that once lay in obscurity now commands the respect of the region's best.



## Football

### 1940 RECORD

Sept. 28—Northern .....	0	Oshkosh .....	6 here
Oct. 5—Northern .....	16	Central .....	14 here
Oct. 18—Northern .....	14	Northland .....	6 at Ashland, Wisc.
Oct. 26—Northern .....	0	Michigan Tech .....	13 at Houghton
Nov. 2—Northern .....	6	Superior .....	38 here
Nov. 9—Northern .....	0	Michigan Tech .....	6 here

In a season clouded by defeats, the victory over powerful Central State stood out as the predominant highlight.

Overcome by Oshkosh the preceding week after outplaying the Badgers most of the way, the Wildcats returned to battle a highly touted Mt. Pleasant eleven which had split its forces for a double-header, anticipating only token resistance from the underdog northerners. A 94-yard runback of the opening kickoff momentarily seemed to justify the downstaters' cocky optimism but the Hurstmens appeared not in the slightest upset. Faced with a brilliant Bearcat line that yielded ground as grudgingly as Greek Evzones, the Wildcats took to the skies, Crampton pulling one down miraculously in the end zone to help tie the count later in the half. Heartened, the locals increased the defensive pressure which soon brought a second score from a blocked Central punt. Norm Slough clinched it with a 30-yard placement boot, although the Bearcats fought stubbornly and threatened to overcome the Olive and Gold in the dying moments of the contest.

The latter half of the season turned out disastrously after the Cats had followed this win with a 14-6 conquest of Northland. An exceptionally strong Michigan Tech squad took the Teachers into camp twice, the final tussle fought in a cold driving rain, being again decided in the waning minutes on a 65-yard gallop by Dale Hawley, star Engineer back. On the previous week-end, the Wildcats had suffered a humiliating 38-6 conquest by the mighty Yellowjackets of Superior State Teachers.

The following men received football awards:

First Year: Ray Austin, Martin Crampton, Norman Slough, Philip Villemure, Chester Wojciehowski, and Chauncey St. Germain.

Second Year: Clifford Bedore, Ralph Ellis, Frank Hartman (captain), Francis Hetherington, Everett Knuth, Arnold Korpi, Emil Koski, Irving Menucci, Joseph Puhek.

Frosh Awards: John Bauman, Richard Bonifas, Jack Frisk, Matt Krznarich, Earl Lashbrook, Benedict Montcalm, Merle Pfothenauer.





## Basketball

Nov. 30—Northern .....	59	Alumni .....	34 here
Dec. 6—Northern .....	26	Eau Claire .....	25 there
Dec. 7—Northern .....	33	Stout .....	42 there
Dec. 13—Northern .....	34	Eau Claire .....	37 here
Dec. 14—Northern .....	38	Stevens Pt. ....	56 here
Jan. 10—Northern .....	40	Superior .....	61 there
Jan. 11—Northern .....	44	Northland .....	46 here
Jan. 17—Northern .....	41	Central .....	39 here
Jan. 18—Northern .....	53	Northland .....	47 here
Jan. 25—Northern .....	44	Mich. Tech. ....	27 here
Feb. 1—Northern .....	31	Superior .....	44 here
Feb. 8—Northern .....	59	Mich. Tech. ....	38 there
Feb. 19—Northern .....	61	Detroit Tech. ....	50 there
Feb. 20—Northern .....	45	Mich. Normal .....	40 there
Feb. 21—Northern .....	73	Grand Rapids U .....	56 there
Feb. 22—Northern .....	42	Central .....	44 there

When Coach Hedgcock made a mild lineup change in the middle of what was beginning to look like a disastrous season, no one dreamed that some folk would soon be calling the Wildcats "the fastest breaking team in the state", or that an outstanding hardwood mentor would be picking the Peds "over almost any other team in the state".

Yet those were precisely the words of Julius Goldman, crafty Detroit Tech coach, after the Cats had clipped his powerful five 61-50 in their first



downstate encounter a month later. Goldman's judgement took on a conspicuous luster as the Hedgcock squad followed with a 45-40 triumph over Michigan Normal, smothered Grand Rapids U 73-56, and wound up with a tough 44-42 setback at Central for a .750 record on its annual trip. Even "Hedge" was forced to admit his proteges were "good".

The downstate blitz gave the squad a record of nine wins in 16 starts, seven of them coming in the last half of the season. The comeback began with a 41-39 conquest of Central, which dropped only three tilts all year, and which turned out to be the only state team that defeated the Olive and Gold. Gaining momentum with wins over Northland and Tech, the Wildcats were primed for mighty and unbeaten Superior on February 1, but Dame Fortune intervened. After battling the brilliant Yellowjackets to a draw for 32-minutes, the Cats lost Slough and St. Germain at the 12-minute mark in the final canto, and were unable to stem the long retarded avalanche that quickly descended. A second decisive defeat of Tech was the last game before the downstate epic.

Speed, keynote of the Wildcat attack, was furnished by a brilliant sharp-shooting trio composed of Harold "Babe" Anderson, of Munising, Eddie "Speed" Olds, Ishpeming, and Chauncey "Mink" St. Germain, Baraga, who collectively registered 534 points during the season. Anderson's 23-point spree at Ypsilanti, and Olds' total of 22 at Grand Rapids earned each cager much individual commendation from downstate scribes.

Outstanding also was the defensive work of Norm Slough, Manistique product, widely lauded for his downstate play, and the steady, all-round effectiveness supplied by Paul Nadeau, Munising yearling. Nadeau's coolness was particularly marked at the foul line where he scored an accuracy percentage of .774.

Believed unique in Northern's cage annals is the fact that this year's squad of eleven had no seniors. Those receiving awards included Edwin Olds and Norman Slough, juniors; Harold Anderson, Chauncey St. Germain, Ray Austin, and Phil Villemure, Sophomores; Paul Nadeau, Jack Frisk, Ray Cardew, and Nick Gerard, Freshmen.

Frosh who played under Coach Hurst and were awarded numerals were Richard Bonifas, Ira Hanson, Matt Krznarich, Benedict Montcalm, Earl Lashbrook, Paul Kotila.

## Tennis

### TENNIS SCHEDULE FOR 1941

May 10 Northern vs. Tech.  
May 24 Northern vs. Tech.

With the loss of letter winners George Jaaski and Paul Wigg, Donald Lahti was the only returning veteran from last year's team.

## Intramurals

Under the direction of Mr. Hurst, the men had an opportunity to take part in badminton, baseball, basketball, boxing, horseshoe, and ping-pong, throughout the year.

The faculty participated two evenings per week during the winter months in volley-ball.

The women, supervised by Miss Stokke, enrolled in badminton, basketball, field hockey, ping-pong, soft-ball, tennis, and volley-ball.





## Track

1940 SEASON

- May 11 Northern 66 2-3 M. C. M. and T. 55 1-3
- May 18 Michigan Intercollegiate held at East Lansing. State championship won by Michigan State Normal College of Ypsilanti.
- May 25 Northern—M. C. M. and T. 41 Michigan State Normal College 80
- June 11 Northern 72 M. C. M. and T. 50

### 1941 SCHEDULE

- May 10 Northern 63 1-2 M. C. M. and T. 58 1-2
- May 17 Michigan Intercollegiate at E. Lansing
- May 24 Northern 67 1-3 M. C. M. and T. 54 2-3
- May 31 Michigan AAU at Ypsilanti

Seven returning lettermen formed the nucleus for this year's team. They were: Ira Griffin, mile, half-mile, and relay; Everett Knuth, 100 yard dash, 220 yard dash; Emil Koski, hurdles, broad jump, and high jump; Toivo Lauri, discus and javelin; Clarence Sayen, broad jump, and high jump; Norman Slough, 220 yard dash, 440 yard dash, and relay; Chester Wojciehowski, discus and shotput.

Northern started the season in grand style by defeating Tech. at Houghton, in a closely contested meet. Highlights of the meet were the fine showing of Ray Austin, Arthur Koski, and Norman Slough.



## ACTIVITIES

Any institution inculcates within its realm of activity certain functions which are not directly connected with the necessary work towards which the institution points, but which, nevertheless, contribute much to the growth and development of the conception for which that institution stands. The early railroads were laid in the Upper Peninsula to aid in the exploitation of the minerals and forests of the area, but along with these immediate objectives, they opened up the area to the farmer, the tradesman, the fisherman, and performed many other services of incalculable value to the development of the country. So, various activities are carried on about an educational institution, which, though not necessary to the ordinary functioning of the institution, contribute greatly to the development of the individuals constituting it.



### *Men's Union*

#### OFFICERS

President—Gerald Grundstrom  
Vice-president—Lenwood Paddock  
Secretary-treasurer—John Doyle  
Seniors—Rupert Otto

Juniors—Edwin Sutter  
Sophomores—Chauncey St. Germain  
Freshmen—Jack Frisk  
Adviser—G. C. Meyland

### *Student Girls League*

#### OFFICERS

President—Mary Ghiardi  
Vice-president—Anna Wolfe  
Secretary-treasurer Dorothy Anderson

Juniors—Miriam Bates  
Sophomores—Mary E. Hedgcock  
Sophomores—Barbara Smith





## Band

### PERSONNEL

#### CORNETS—

John Pellow  
Kenneth LaBerge  
Charles Seaborg  
Vernon Ihlenfeldt  
Ward Goodney

#### FRENCH HORN—

Ralph Nyquist  
Edgar Barker  
John DeVoe

#### BARITONE—

Roger Bennetts

#### TROMBONE—

George Gill  
Don Young  
Max Sadoff

#### BASS—

Lauren Blohm  
Robert Belanger

#### B FLAT CLARINET—

Glenn Anderson  
Joe Parker

Peter Talso

Hugo Lahti

Irving Johns

George Bennett

George Nicolas

Alfred Niemi

William Grenfell

#### E FLAT CLARINET—

Calvin Bennetts

#### ALTO CLARINET—

Robert Anderson

#### BASS CLARINET—

Jack Frisk

#### OBOE AND BASSON—

Merle Clayton

#### ALTO SAXOPHONE—

John Zychowki  
Harold Koski

#### TENOR SAXOPHONE—

Albert Buck

#### BARITONE

SAXOPHONE—  
Lawrence Negro

#### SNARE DRUM AND TYMPANI—

George Cavender

#### SNARE DRUM—

Edward Ramberg

#### BASS DRUM—

Frank Paull



## College Chorus

Director—Dr. Roy A. Williams

#### Soprano—

Alexander, Catherine  
Anderson, Dorothy Jean  
Burkland, Edna  
Bordeau, Dorothy  
Cardinal, Jean  
Croisetiére, Marie  
Delaney, Mary  
Ehnerd, Mary Jane  
Greene, Carol  
Greene, Lorna  
Hedstrom, Helen  
Jackson, Aleen  
Johnson, Eleanor  
Laux, Ruth  
Leonard, Rosemary  
LeDuc, Barbara  
Maki, Iona  
Matero, Eleanor  
Murr, Betty  
Nikolsky, Tatiana  
Peterson, Marie  
Quinlan, Anna  
Riipa, Saima  
Stindt, Mary  
Strand, Mildred  
Sundberg, Phyllis

Tallio, Effie  
Tonkin, Beatrice  
Trevarthen, Audrey  
Valaske, Kay  
Weber, Patricia  
Williamson, Evelyn  
Wilson, Lorraine

#### Alto—

Alexander, Henrietta  
Alvord, Marilyn  
Beaudin, Jeanne  
Belstrom, Jean  
Bovan, Mary  
Burklund, Marie  
Cleminson, Norma  
Cote, Eleanor  
Dagwell, Margaret  
DesJardins, Marigene  
DeVoe, Jean  
Doan, Joyce  
Frechette, Helen  
Gaspar, Patricia  
Girard, Ethel  
Goodman, Dorothy  
Grundlund, Ruth  
Hudnall, Betty  
Johnson, Mary

Johnson, Virginia  
Kanney, Mary  
Kenny, Gladys  
Kepler, Margaret  
Kruka, Edith  
Larson, Dorothy  
Lemieux, Idabelle  
Lillie, Dorothy  
Lindstrom, Dorothy  
Martin, Betty  
Michelson, Esther  
Peterson, Marion  
Rice, Mary  
Rolen, Mary  
Sharp, Marjory  
Schmeltzer, Adeline  
Smith, Barbara  
Smith, Mildred  
Stanaway, Mary  
Strand, Eileen  
Villemure, Phyllis  
Vinkemulder, Faye  
Wagner, Violet  
Wertanen, Mabel  
Ylinen, Helen

Tenor and Bass—  
Anderson, Glenn

Barker, Edgar  
Bennetts, Calvin  
Carpenter, Charles  
Enwright, John  
Gardner, Robert  
Gendron, Leo  
Gill, George  
Grenfell, William  
Hatch, James  
Ihlenfeldt, Vernon  
Johns, Irving  
Kivela, Henry  
LaBerge, Kenneth  
Lindeman, Robert  
Negro, Lawrence  
Newman, Warren  
Nicolas, George  
Niemela, Lauri  
Olander, Eino  
Otto, Rupert  
Parker, Joe  
Paull, Frank  
Ranger, Noel  
Strand, Edward  
Woodbridge, James  
Young, Donald

### ACCOMPANYING ORCHESTRA

#### First Violin—

Hinda Cunningham,  
Concertmaster  
Arline Carlson  
George Cavender  
John DeVoe

#### Second Violin—

Bernice Waters  
Jack Williams

#### Viola—

Helen Sharpsteen  
Dorothy Marks

#### Cello—

Adele Anderson  
Olive Larson

#### Chimes—

George Cavender

#### Bass—

Robert Belanger

#### Clarinet—

Peter Talso  
Robert Anderson

#### Bassoon and Flute—

Merle Clayton

Piano—Mrs. Beulah Williams

#### Trumpet—

Henry Kivela  
Keith Butler

#### Horn—

Rev. Sydney Smith

#### Trombone—

Max Sadoff

#### Percussion—

Edward Ramberg





### Intercollegiate Debate

The squad made its first trip of the year during the last week in January. The participating teams had non-decision practice debates at Ripon, Wisconsin, and on the return both squads were victorious over the St. Norbert's College team, of DePere, Wisconsin.

Outstanding highlight of the year was championship won at the White-water (Wisc.) tournament on February 14 and 15. After practice debates at Marquette U. in Milwaukee, the teams won the Governor Heil Trophy with a record of seven triumphs in eight contests.

The Manchester (Ind.) tournament one week later marked the end of the year's schedule. Over 200 colleges took part in the tourney in which Northern debated successfully in seven out of twelve matches.

The question debated this year was:

Resolved, That the nations of the western hemisphere should form a permanent union.

The team, which was coached by Forest A. Roberts, was composed of Robert Anderson, John Anthony, Arnold Behrsin, Bernice Burak, Donalda Graham, Ira Griffin, Mary Moore, Dorrine Petersen, Max Sadoff, Clarence Sayen.



### THE NORTHERN COLLEGE NEWS

Vol. XXIII

No. 17

Published Bi-weekly except August and September by the NORTHERN STATE TEACHERS COLLEGE, Marquette, Michigan

Member

#### Associated Collegiate Press

Entered as Second Class Matter at Marquette, Michigan, in November, 1914, under the Act of March 3, 1873.

Price, \$1.00 a year; ten cents a single copy.

Editor-in-Chief—JAMES HATCH

Sports Editor.....ORLANDO SPIGARELLI  
Feature Editor.....FRANCES OLIVIER  
News Editor.....VIRGINIA FREI  
Social Editor.....MARY MOORE

Mailing Editor—OLIVE LARSON

#### REPORTERS

Marjorie Alvord    Vivian Fadner    Mildred Mahan    Marjorie Sayles  
Elizabeth Anderson    Warren Naber    Edwin Olds    Phyllis Villemure  
Merle Clayton    Douglas Kell    Rupert Otto    Doris Walker  
Walter Denomme    Edith Kruka    Mildred Paananen    Helen Ward  
James Douglas    Donald Lahti    Len Paddock    Georgette Wellner  
Idabelle LeMieux    Bonnie Porter

Faculty—G. C. Meyland, Adviser; F. R. Copper, Circulation; C. C. Wiggins, Business Manager.





**Loans to Teachers---**

No Security  
 No Endorsers  
 Lower Rates

**Walter C. Wylie & Co.**

SOO

MARQUETTE

ALPENA

LARGE STOCK

QUICK SUPPLIES

All Kinds of Building Materials

**Consolidated Fuel & Lumber Co.**

MARQUETTE, MICHIGAN

**E. and J. Williams**

*"The Store That Value Built"*

**GROCERIES AND MEATS**

Phone 188-189

246 W. Hewitt Ave.

Marquette Mich.





**PRINTING  
RULING  
BINDING**

**Guelff Printing Co.**  
PHONE 809 MARQUETTE

COMPLIMENTS OF  
**S. & S. Auto Parts Co.**  
209 South Front St.  
Phone 1901

COMPLIMENTS OF  
**Berryman's Store**

**JAMES PICKANDS & CO.**

**COAL**

Wholesale Retail

MARQUETTE Phone 90      ISHPERING Phone 175      NEGAUNEE Phone 103



**NYLAND  
MOTOR SALES**

800 WASHINGTON ST.  
Marquette  
THE NEW FORD DEALER

**Miss School Teacher**

You can afford  
a vacation.

See the  
**Liberty Loan Corp.**

**THE STYLE SHOP**

115 South Front Street  
You are always welcome at  
the Style Shop  
Come in to LOOK around.  
SPORTSWEAR — FORMALS  
DRESSES  
American Lady and Hickory  
Foundations  
Coats Lingerie  
Exclusive but NOT expensive



**Schoch & Hallam**

Jewelers  
Established 1892  
Elgin Watches  
Fostoria Glassware  
1847 Rogers Bros. Silver

COMPLIMENTS OF  
**BON TON CAFE**

**A. J. JEAN & SON**

Jewelry  
Music  
and  
Optical Departments  
118 S. FRONT ST.  
Marquette and Sault Ste. Marie

COMPLIMENTS OF  
**Marquette Bottling  
Works**  
117 North 3rd Street  
Phone 72

COMPLIMENTS OF  
**The Delft and Nordic  
Theatres**



**SWANSON'S FUNERAL HOME**





**STERN & FIELD**

**HART SCHAFFNER & MARX  
CLOTHES**

Bostonian Shoes and Arrow Shirts

**OUR SINCERE CONGRATULATIONS**

to

**Northern Graduates and Students  
"May Every Success Be Yours"**

Remember

**THE NORTHERN STATIONERS**

As your source of supply for complete school supplies and equipment when you are settled in your new teaching position.

Union National Bank Bldg.  
Wilfred Royea, Jr.

Marquette, Michigan  
John M. Hogan

**Donckers**  
MARQUETTE

In Business Since 1896



Your orders will be filled with  
fresh flowers from our  
own Greenhouses.

Order from

**LUTEY'S  
GREENHOUSES**

A. J. LUTEY, Prop.  
MARQUETTE or NEGAUNEE

We deliver everywhere

COMPLIMENTS OF

**Marquette Baking  
Company**

521 North 3rd Street

Phone 215-216

COMPLIMENTS OF

**STIERLE'S STUDIO**

**Jacob Rose & Sons**

**The  
Store of Quality**

**MARQUETTE STEAM LAUNDRY**

**CLEANERS—DYERS**

"Accent" on up-to-the-minute laundry and dry cleaning service!

**SPECIAL RATES FOR STUDENTS**

PHONE 44

**PACKAGED FUEL FOR YOUR PICNIC  
OR  
CAMPING TRIP**

**LUMBER AND MILL WORK FOR THAT  
FINE SUMMER COTTAGE**

**F. B. SPEAR AND SONS**

MARQUETTE

ISHPEMING





COMPLIMENTS OF

**Tonella & Rupp**

Furniture and Floor Covering

COMPLIMENTS OF



"The Cream of the North"

COMPLIMENTS OF

**Kelly Hardware Co.**

COMPLIMENTS OF

**S. S. KRESGE & CO.**

COMPLIMENTS OF

**Sweet Goods Shoppe**

**Getz Dep't Store**

COMPLETE OUTFITS  
FOR  
COLLEGE STUDENTS

COMPLIMENTS OF

**J. C. PENNEY CO.**



COMPLIMENTS OF

**PAT SHEA'S CAFE**

Phone 960

West Washington Street

COMPLIMENTS OF

**CO-OP SANITARY**

**DAIRY**

Washington Street

**Shoe Store**

A Store Devoted Exclusively  
to Footwear

Phone 512

Elk's Temple

**MITZI**

Two Smart Shops in One

Hats      Purses

Shoes      Hosiery

155 Washington St.

**LaBontes Food Store**

800 North Third St.  
Phone 573-571

**Quality Groceries—Meats**

Birds Eye Frosted Foods  
Fruits — Vegetables  
Velvet Ice Cream

We Deliver

**STOP**

Where They All

**STOP**

**Tip Top Cafe**

LUNCHES

HOME MADE ICE CREAM

COMPLIMENTS OF



"Individual styles to fit the personality of the individual."





COURTESY OF

**LEMON'S STUDIO**

COURTESY OF

**RAIKKO'S**

Tailors — Dry Cleaners  
Mothproofers

Phone 2550

COMPLIMENTS OF

**J. & H. Electric Co.**

COMPLIMENTS OF

**Lake Superior Ice Co.**

UGER GREENLEAF

**CREAMLAND**

1324 No. Third St.

Students Hangout

Across from the College

COMPLIMENTS OF

**FREI'S BAKERY**

COMPLIMENTS OF

**NORTHLAND HOTEL**



*Freshmen*

Ollila, Helmi E.  
Pach, John S.  
Pavlot, Lorraine H.  
Peasley, Harold L.  
Petersen, Dorrine A.  
Peterson, Gladys S.  
Peterson, Jeannette E.  
Peterson, Willard W.  
Pynnonen, Leino W.  
Power, Patricia  
Quinlan, Anna M.  
Raess, Marilyns J.  
Rajala, Clifford A.  
Ramberg, Edward W.  
Rank, John B.  
Rein, Alice A.  
Robert, Rosemary M.  
Roberts, Mabel M.  
Rolen, Mary H.  
Rosenbaum, Nissel

Rosenbaum, Sarah  
Russell, Lawrence F.  
St. Onge, Norman F.  
Sargent, Edith F.  
Sarkela, Aili M.  
Seaborg, Charles H.  
Sharpensteen, Helen H.  
Skytta, Norman M.  
Smith, Dorothy M.  
Sonaglia, John L.  
Sormunen, William J.  
Stanley, Pauline B.  
Stoneman, Fernley  
Strand, Edward G.  
Summersett, Kenneth G.  
Sundberg, Phyllis M.  
Swanson, Robert R.  
Shank, Jack  
Thorson, Mildred D.  
Tonagel, Virgil C.

Tonkin, Beatrice P.  
Trevarthen, Audrey C.  
Trotochaud, Edward P.  
Tikkanen, Ingrid  
Urlich, William A.  
Veale, Evelyn E.  
Villa, Vincent J.  
Villemure, Phyllis A.  
Vogelheim, Franklin J.  
Von Zellen, Bruno W.  
Wagner, Violet J.  
Ward, Edward Francis  
Ward, Helen M.  
Weiser, John C.  
Wiencek, Michael E.  
Wilbee, Dell Jeanne  
Winkel, Margaret E.  
Wood, Evelyn S.  
Zychowski, John

COMPLIMENTS OF

**Gamble Store**

COMPLIMENTS OF

**Paris Fashion**

**PRESSES**

*of the*

**Stenglein Printing Co.**

Phone 1242

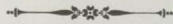
**MARQUETTE, MICH.**





## DID YOU—

first look for an alleged likeness of your self—  
then ferret out your friends—  
single out your enemies (if any), remarking that the picture  
was unusually flattering—  
backtrack to your own picture (Yes, sir, not bad!)—  
take time out for jokes (read cynically, of course)—  
read essays (if any), looking closely for grammatical errors?



## Acknowledgments

The staff wishes to acknowledge the assistance of the following individuals and firms, whose co-operation greatly aided in the production of this volume.

Mr. Rollin K. Thoren  
Stenglein Printing Co.  
Oshkosh Engraving Co.  
Robert Schram



