

OCT 1 1987

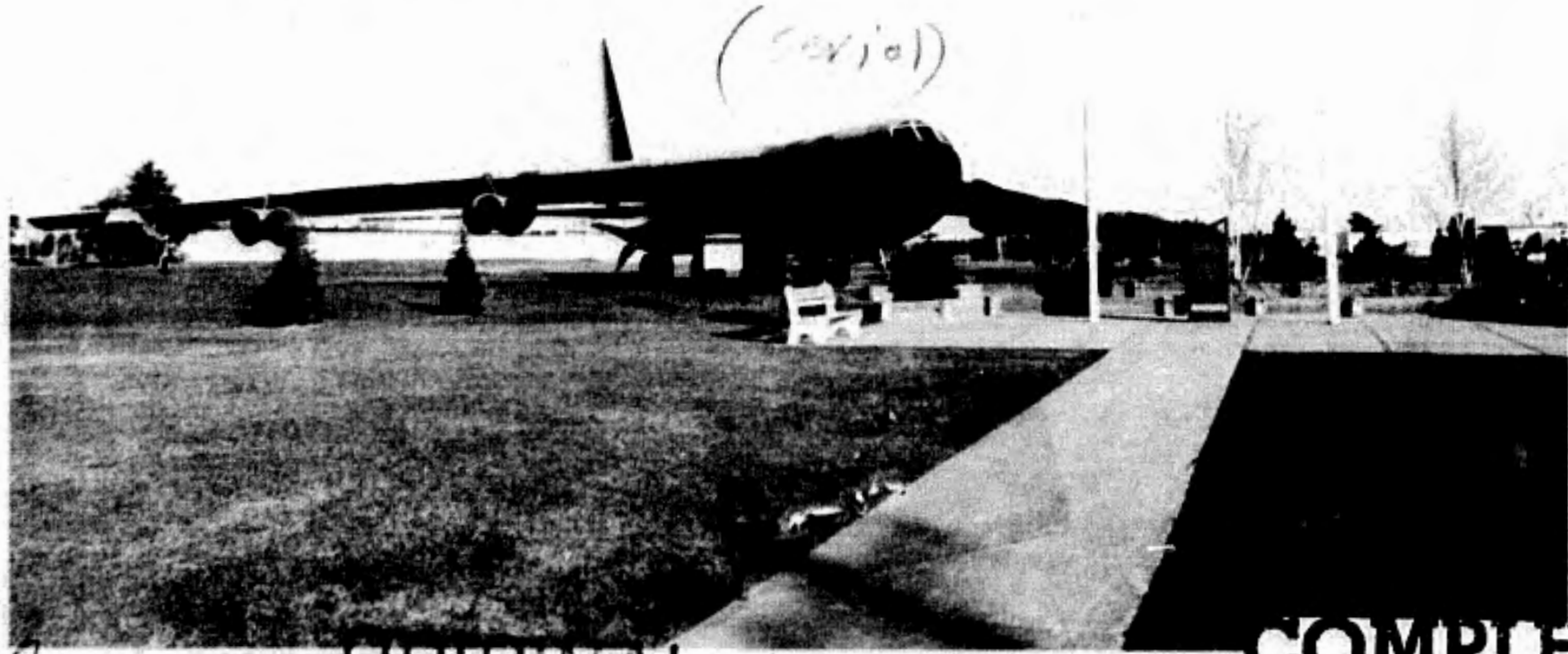
D.301.105:986

FY 86

ECONOMIC RESOURCE IMPACT STATEMENT



(Serial)



Am

ORIGINAL

COMPLETED

WELCOME TO K I SAWYER AFB MICHIGAN





DEPARTMENT OF THE AIR FORCE
HEADQUARTERS 410TH BOMBARDMENT WING (SAC)
K. I. SAWYER AIR FORCE BASE MICHIGAN 49843

REPLY TO CC
ATTN OF

SUBJECT Economic Resource Impact Statement

TO See Distribution

1. The Economic Resource Impact Statement (ERIS) is published once each fiscal year. The intent of the ERIS is to provide unclassified information to public officials and visitors concerning the mission and resources of K. I. Sawyer AFB, MI. The information provided is an example of the impact of K. I. Sawyer on the local community and surrounding geographical area.

2. Local distribution is made to the Commander and Staff, operating agencies, and distinguished public officials. The publication is prepared by the Cost Branch of the Comptroller Division. Questions regarding this publication should be directed to the Cost Branch, phone 1-906-346-2991 (AUTOVON 472). Comments or ideas for improvement are appreciated and can be submitted by filling out the critique located on the last page, and forwarding it to 410 BMW/ACC, K. I. Sawyer AFB, MI 49843.

ANTONIO MALDONADO, Colonel, USAF
Commander



Peace . . . is our Profession

PREFACE

The Economic Resource Impact Statement is prepared annually in accordance with Air Force Regulation 170-4. The information contained within this statement is the most current data available as of 30 September 1986. This information includes host and tenant units assigned to K.I. Sawyer AFB unless otherwise noted.

A special thanks goes out to the 410 CSG Graphics shop for their outstanding support in developing titles and lead-in pages for this year's book. Also special thanks to all the offices that supplied us with the source data needed to make this book possible.

COST BRANCH STAFF

CAPT DOUGLAS J. THOMPSON
1ST LT CRAIG M. SMITH
MSGT PAUL M. WALKER
SGT DIANNE J. AVERGONZADO
SSGT SUSAN A. MCCONNELL

CHIEF, COST BRANCH
COST ANALYSIS OFFICER
NCOIC, COST BRANCH
COST ANALYST
ADMINISTRATIVE SPECIALIST

CONTENTS

COMMANDER'S STATEMENT		
PREFACE	i	ii
CONTENTS	1	
WING EMBLEM	2	
MISSION STATEMENT	3	
HISTORY OF K. I. SAWYER	4	
HISTORY OF 410TH BOMBARDMENT WING	5	
AWARDS	7	
ORGANIZATION	11	
FORCE STRUCTURE	13	
AIRCRAFT	14	
TRANSPORTATION	14	
SUPPLY	15	
ENERGY	16	
HOSPITAL	17	
COMMUNITY PROJECTS	19	
EDUCATION	21	
CAPITAL ASSETS	25	
SQUARE FOOTAGE	27	
AUTOMATIC DATA PROCESSING EQUIPMENT	28	
COMMUNICATIONS	29	
NAVIGATION	30	
PERSONNEL	31	
DOLLAR RESOURCES	34	
DOLLAR EXPENSES	36	
PAYROLL EXPENSES	37	
CONTRACTING	38	
MORALE, WELFARE AND RECREATION	40	
CONSTRUCTION	42	
ECONOMIC IMPACT	47	
JOBS CREATED	48	
K.I. SAWYER'S IMPACT	49	
DISTRIBUTION	50	
CRITIQUE	51	

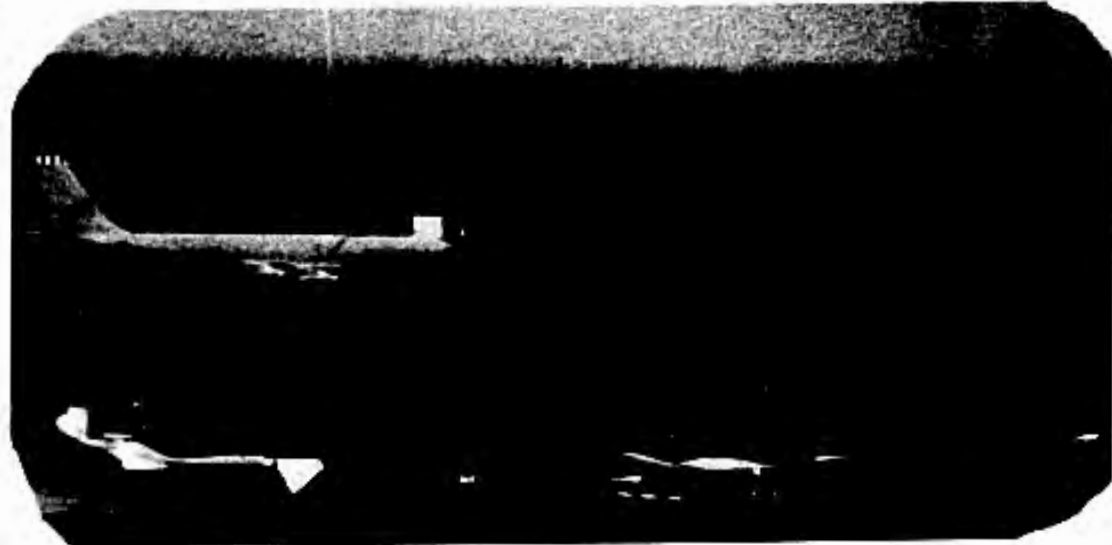
410th BOMBARDMENT WING EMBLEM



The emblem is symbolic of the Wing and its mission, with the stars symbolic of the World War II history of the 410th Bombardment Group. The blue background alludes to the sky - the primary theater of Air Force operations with light and deep shades referring to day and night maintenance of peace. The globe signifies the unit's world-wide capabilities, while the winged bomb depicts the type of unit and the Air Force blue stars at four and ten o'clock positions depict the numerical designation. The total twenty stars symbolize the A-20 Havoc Bomber utilized by the 410th Bombardment Group. The twelve stars encircling the globe represent the variety of equipment destroyed. The three stars on the lightning bolt signify the missions against the V-1 weapon sites, the Presidential Distinguished Unit Citation awarded, and the six campaign participation credits earned. The lightning bolt symbolizes the Air Force Outstanding Unit Award awarded the Wing in 1963. The emblem bears the Air Force colors, golden-yellow and ultramarine blue, and the national colors, red, white, and blue.

MISSION

The mission of the 410th Bombardment Wing is to maintain a state of operational readiness and to serve as a deterrent to attacks on the United States. We must be prepared to perform immediate retaliatory operations against any adversaries by accomplishing all tasks assigned in Emergency War Orders. Continuous training missions ensure all air crews are highly qualified to perform their duties, and support personnel are constantly implementing maintenance and logistics procedures to keep the assigned aircraft in a high state of readiness.



THE HISTORY OF K. I. SAWYER

K. I. Sawyer Air Force Base, located 23 miles southeast of Marquette, Michigan, was named after Kenneth I. Sawyer, a former Marquette County Road Commissioner.

A hill of sand was the prominent feature of the present base area when, in 1941, Sawyer first presented to the Marquette County Board his plans for an airport. As Superintendent of the Marquette County Road Commission, airports were not his direct responsibility; however, Sawyer realized the value of air service to Marquette County and through his efforts an airport was built at the site of the present base. It was suggested during World War II that an Air Force base be built on the site, but the proposal was not acted upon. The airport was named for Sawyer after his death in 1944.

Negotiations between the county and the U. S. Government for the lease of the airport as a military installation began in 1954. On January 24, 1955 an agreement was signed and K. I. Sawyer County Airport became an air base.

The base was activated by military personnel on 8 April 1956, but the runway was not officially opened until late October 1959, when an F-101 "Voodoo" touched down at the field. The host unit at that time was the 56th Fighter Wing. As host, the 56th accommodated two major tenant units, the Sault Ste. Marie Air Defense Sector - a Semi-Automatic-Ground-Environment (SAGE) operation and the 4042nd Strategic

Wing, a Strategic Air Command (SAC) Unit. Both tenants moved to the base in 1958.

In February 1963, the 4042nd Strategic Wing was redesignated the 410th Bombardment Wing (Heavy). The sector headquarters functioned until the end of September 1963, when it was phased out of the Air Force inventory. The 56th deactivated in late 1963, and on January 1, 1964 control of the base passed to the 410th.

The F-101 Voodoo-equipped 62nd Fighter Interceptor Squadron, originally assigned to the 56th, remained at Sawyer as a tenant unit until April 30, 1971 when it was deactivated. The 87th Fighter Interceptor Squadron and its F-106 Delta Darts were transferred to Sawyer from Duluth Municipal Airport, Minnesota, in May 1971. The 87th Fighter Interceptor Squadron remained as a tenant unit until 1 October 1985 when it was deactivated.

The base is now the home of the 410th Bombardment Wing (Heavy), the 410th Combat Support Group, the USAF Hospital, the 2001st Information System Squadron, and an Operating Location for the 71st Flying Training Wing.

Sawyer is controlled in ascending order of command, by the 40th Air Division, headquartered at Wurtsmith AFB, Michigan; Eighth Air Force, headquartered at Barksdale AFB, Louisiana; and the Strategic Air Command, headquartered at Offutt AFB, Nebraska.

410th BOMBARDMENT WING HISTORY

The 410th and its four bombardment squadrons - the 644th, 645th, 646th, and 647th - were activated on 1 July 1943 and assigned to Will Rogers Field, located near Oklahoma City, Oklahoma, for initial training in the Douglas A-20 "Boston" attack bomber.

After three months at Will Rogers, the 410th moved to Muskogee Army Airfield at Muskogee, Oklahoma for advanced training. The group flew around the clock, accumulating hundreds of low-level training hours in preparation for what the men assumed would be the eventual deployment of the group to the Pacific. It was at Muskogee that the 644th applauded itself as the "Best Damn Bomb Squadron in the World" - a claim held in something more than mild dispute by the other three squadrons.

The 410th arrived at Laurel, Mississippi on 5 January 1944 but remained there only a month. Mud, heavy fog, and smoke from nearby factories prevented the accomplishment of all but a minimum of training, and in early February the group moved to Lakeland Army Airfield at Lakeland, Florida.

In its five week stay at Lakeland, the 410th completed bombing and gunnery training and then turned to simulated combat missions complete with briefings, interrogations, mission reports and critiques. The fliers spent some 3,300 hours in the air and in early March were pronounced ready for combat and overseas deployment - to Europe.

From Lakeland, the men journeyed by train to Camp Kilmer, New Jersey, for four days of processing. The 410th arrived in New York City on 21 March and boarded the Saturnia, an Italian merchant ship that had escaped from Trieste and evaded German bombers. The Saturnia sailed out of New York on 23 March with approximately 3,600 men aboard.

The Saturnia crossed the Atlantic without incident and anchored off Britain's coast in the Firth of Clyde on 2 April 1944. The men went ashore the next day and boarded a train for Birch, England, arriving in time for breakfast on 4 April 1944. After a short stay at Birch, the group moved to its first combat at Gosfield, in Essex County, England on 16 April.

The 410th and its A-20s went into combat on 4 May as part of the Ninth Air Force and for the next month bombed coastal defenses, airfields, V-weapon sites and marshalling yards in advance of the Normandy Invasion. On D-Day and after, the 410th became heavily involved in the assault against the Fortress of Europe.

On 18 September the group crossed the English Channel and settled into its next location at Maisoncelles, France, on 27 September. From Maisoncelles, the 410th attacked defended villages, railroad bridges and overpasses, marshalling yards, military camps and communication centers in support of the assault against the Siegfried Line. Then came late December and the Bulge.

In five days, the 410th flew 411 sorties against the German counter offensive, hitting marshalling yards, bridges, railheads and vehicles in the battle.

In the Ardennes, the 410th proved to be especially effective - so much so that the group received the Presidential Distinguished Unit Citation for its missions in that area on 23, 24, and 25 December 1944.

The Germans' last big gasp stifled, the 410th advanced to Rheims, France on 9 February 1945. From Rheims, the 410th bombed industrial targets such as jet engine plants and ordinance depots in the Ruhr and deep inside Germany. On 25 April 1945, the 410th flew its final combat mission of the war. The target - an airfield in Erding, Germany.

Reassigned to Seymour Johnson Field, North Carolina, the group reassembled in late August. For the next two months, the men trickled away as the American military machine was disassembled. On 5 October, the 410th moved to Myrtle Beach Army Airfield, South Carolina, and with its job done, it was deactivated on 7 November.

On 1 February 1963, with headquarters at K. I. Sawyer AFB, Michigan, the 410th was reborn the 410th Bombardment Wing (Heavy). Assigned to the Strategic Air Command (SAC), the 410th exchanged the A-20 aircraft for the B52-H Stratofortress bomber and the KC-135A tanker.

WING AWARDS

1. Presidential Distinguished Unit Citation; 23 - 25 Dec 1944.
2. Air Force Outstanding Unit Award; 1 Feb - 31 Mar 1963.
3. 410th Bombardment Wing - John Wynne Trophy - 3 Aug 67, 12 Feb 68 and 12 Aug 70.
4. 410th Bombardment Wing - Walter C. Sweeney, Jr., Award 25 Jul 70 and 1 Sep 71.
5. 410th Bombardment Wing - William B. Martensen Award - 12 Aug 70.
6. 410th Bombardment Wing - Golden Bomber Trophy - 1 Sep 71.
7. 410th Bombardment Wing - Navigation Trophy during the 1966 SAC Bombing and Navigation Competition.
8. 410th Bombardment Wing - Blue Steel Trophy - Apr 71 (British Royal Air Force Bombing Competition).
9. 46th Air Refueling Squadron - Saunders Trophy - 1962-63.
10. Air Force Outstanding Unit Award; 1 Jul 1975 - 30 Jun 1976
11. Field Maintenance Squadron was awarded the Air Force Outstanding Unit Award by the Commander-In-Chief of SAC for the period of 1 Jul 1976 through 30 Jun 1977.
12. Operations Division received the Eighth Air Force Superior Bombing Award for 1 Jan through 30 Jun 1978.
13. Munitions Maintenance Squadron was selected as best in Fortieth Air Division for 1978.
14. Staff Judge Advocate's Office received the Eighth Air Force Outstanding Judge Advocate Award for 1 Jun through 31 Dec 1978.
15. 410 Field Maintenance Squadron, Best FMS in 40th Air Division, 1979.

AWARDS (con't)

16. General George C. Kenney Award presented semi-annually for the best Operational Readiness Inspection/BUY NONE performance by a SAC Wing, 1 Feb - 30 Jun 1980.
17. The maintenance complex was awarded the Eighth Air Force William B. Martensen Award for FY79.
18. Air Force Outstanding Unit Award for 410th Avionics Maintenance Squadron, 14 Jan 1980.
19. General George C. Kenney Award (Second Consecutive Award), 15 Aug - 15 Dec 1980.
20. 40th Air Division Commander's Trophy for 1980.
21. 410th Avionics Maintenance Squadron, Best AMS in SAC for 1980.
22. 410th Field Maintenance Squadron, Best FMS in 40th Air Division for 1980.
23. Omaha Trophy for Best Wing in SAC, 1980.
24. General Bruce K. Holloway Humanitarian Trophy for 1980.
25. MacKay Trophy Award in 1981 for the around the world flight by two 644th Bombardment Crews in 1980.
26. General Alfred F. Kalberer Outstanding Airmanship Award, Feb 1981.
27. 644th Bombardment Squadron, Best in Eighth Air Force for 1980, 19 Mar 1981.
28. 410th Services Squadron named Best in SAC for second consecutive year for 1981.
29. 410th Civil Engineering Squadron named Best in SAC for 1981.
30. General Bruce K. Holloway Humanitarian Trophy for 1981 (Second Consecutive Year).
31. Air Force Outstanding Unit Award, 1 Jul 1980 - 30 Jun 1981.
32. 46th Air Refueling Squadron, Albert L. Evans Memorial Trophy for best Air Refueling Squadron in SAC for 1981.

AWARDS (con't)

33. The 410 BMW won the Eighth Air Force Outstanding Alert Facility Award for 1981, 15 Mar 1982.
34. Transportation was selected as best in 40th Air Division for 1981, 1 Jun 1982.
35. Safety Office won Air Force Flying Safety and Missile Safety Awards for 1981, 16 Jun 1982.
36. Administrative Division named as Best in SAC for FY82.
37. Hospital was awarded the General Alonza A. Towner Memorial Medical Facility Award for 1982, 11 Nov 1982.
38. 46th Air Refueling Squadron won the General Carl A. Spaatz Memorial Air Refueling Trophy for 1982, 18 Nov 1982.
39. CBPO received the Gerrit D. Foster, Jr. Outstanding CBPO Achievement Award for 1982 on 1 May 1983.
40. Maintenance complex received Eighth Air Force William B. Martensen Award for 1982 (second time), 15 May 1983.
41. Electronic Counter Measures Competition, James F. Bartsch Memorial Electronic Warfare Trophy, 23 Oct 1983.
42. 46th AREFS won the 1983 Eighth Air Force Golden Tanker Award, 9 Feb 84.
43. 410th BMW won the 40th Air Division Commander's Trophy for 1983 on 5 Mar 84.
44. 410th BMW won the Giant Sword Trophy for the second consecutive year 1983-1984.
45. 410th BMW won the Spirit Bell during Giant Sword competition, 1984.
46. 410th Civil Engineering Squadron - Air Force Outstanding Unit Award for 1 Jul 1982 - 30 Jun 1984.
47. 410th Munitions Maintenance Squadron - Air Force Outstanding Unit Award for 1 Jul 1982 - 30 Jun 1984.

AWARDS (con't)

48. 410th Services Squadron - Air Force Outstanding Unit Award for 1 Jul 1982 - 30 Jun 1984.
49. 410th Bombardment Wing - SAC Facility Energy Incentive Award - 1984.
50. 410th Civil Engineering Squadron - SAC Snow and Ice Control Management Award for 1984.
51. 410th Consolidated Headquarters Squadron - 8th Air Force Outstanding Unit Orderly Room for 1984.
52. 410th Public Affairs - Third Place, 1984 SAC Media Contest, Category C.
53. 410th Bombardment Wing - National Safety Council Ground Safety Award of Honor for 1984.
54. K. I. Sawyer AFB Billeting Office - Runner-up for the SAC Innkeeper Award.
55. 410th Bombardment Wing Safety Office - Best Ground Safety Program in the Air Force for 1984 (Best in SAC and Air Force).
56. Comptroller Division was named Best in SAC for 1985.
57. 410th Munitions Maintenance Squadron received the SAC Maintenance Effectiveness Award for 1985.
58. 46th Air Refueling Squadron - Air Force Outstanding Unit Award - 1 Jul 84 - 30 Jun 86.
59. 410th Munitions Maintenance Squadron - Air Force Outstanding Unit Award - 1 Jul 85 - 30 Jun 86.
60. 410th Bombardment Wing - United States Air Force Safety Awards for CY 86 - Explosive Safety Plaque and Nuclear Surety Plaque.

ORGANIZATIONS

HOST

410th Bombardment Wing

644th Bombardment Squadron
46th Air Refueling Squadron
307th Air Refueling Squadron
Avionics Maintenance Squadron
Field Maintenance Squadron
Munitions Maintenance Squadron
Organizational Maintenance Squadron
Supply Squadron
Transportation Squadron

410th Combat Support Group

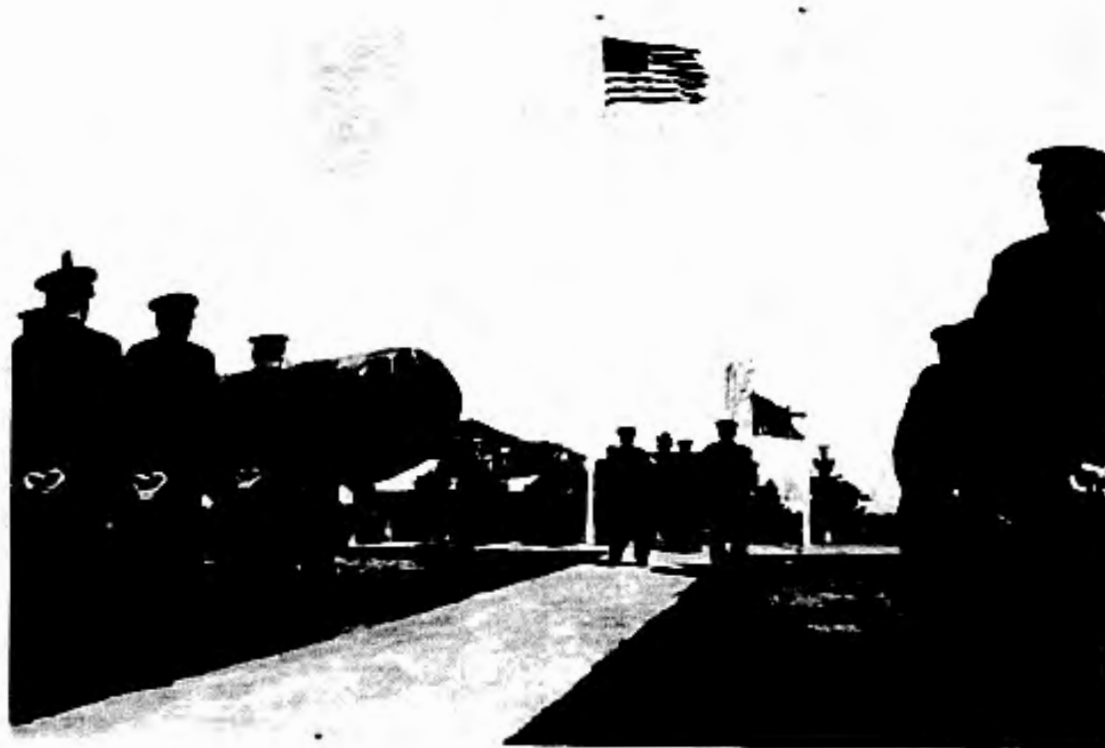
Civil Engineering Squadron
Security Police Squadron
Services Squadron

USAF Hospital

TENANT

2001st Information Systems Squadron (AFCC)
Det 20, 3904 Management Engineering Squadron (SAC)
ELF Transmitter Facility (NAVY)
Det 512, AF Office of Special Investigation (AFOSI)
US Army Corps of Engineers (ARMY)
Air Force Audit Agency (AFAA)
OL-A, 71st Flying Training Wing (ATC)
Det 24, 26th Weather Squadron (MAC)
OL TG, Det 20, AF Commissary Service (AFCOMS)
Defense Reutilization and Marketing Office (DOD)
Area Defense Counsel (APLSC)
Army and Air Force Exchange Service (AAFES)
Det 225, 3753 Field Training Squadron (ATC)
Det 2, Aerospace Systems Division (AFSC)
OL EA, Oklahoma City ALC Center (AFLC)

PROGRAM DATA



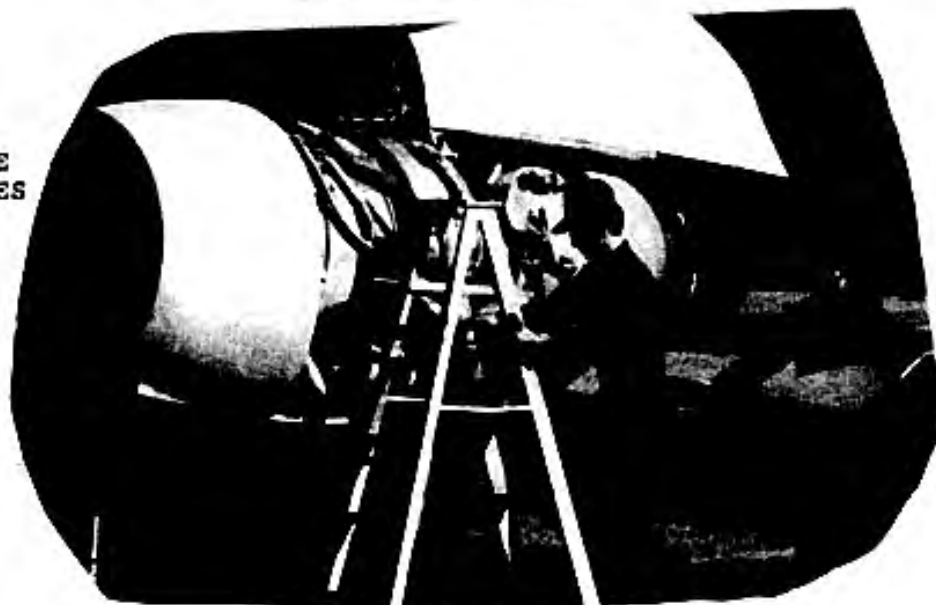
FORCE STRUCTURE

AIRCRAFT	ASSIGNED
410th Bombardment Wing/SAC	
B-52H	20
KC-135A	25
71st Flying Training Wing, OL-A/ATC (ACE)	
T-37	5
	<hr/>
Total	50

Sources: 410 BMW/MAP, 71 FTW/OL-A

AIRCRAFT

AIRCRAFT	FLYING HOURS (000)	SORTIES (000)	ENGINE CHANGES
B-52H	7.6	1.1	42
KC-135A	5.2	1.4	21
T-37	<u>2.5</u>	<u>1.8</u>	<u>2</u>
Total	15.3	4.3	65



Sources: 410 BMW/MAP, 71FTW/OL-A, LGT

TRANSPORTATION

Tonnage Received	4,065
Tonnage Shipped	1,413
Vehicles Assigned	
(1) Special Purpose	163
(2) Snow Fleet	75
(3) General Purpose	312
(4) Organizational Equipment	<u>52</u>
Total Vehicles	602

SUPPLY

Number of Item Records Loaded in the Computer	67.5
Number of Computer Inputs	230.1
Requisitions	5.1
Stock Effectiveness	84.8%
Issue Effectiveness	70.3%
Total Dollar Value of Supplies on Hand	\$ 42,414.2
Total Dollar Value of Equipment on Hand	\$ 2,049.7
General Support Division Stock Fund	\$ 2,612.8
Sperry 1100/60 Transactions	92.0
Receipts	4.7
Local Purchase Receipts	.6
Issues	11.1
Bench Stock Issues	2.3

Data in (000) except stock/issue effectiveness

FUELS

TYPE OF FUEL	RECEIPTS (000)		ISSUES (000)	
	GALLONS	DOLLARS	GALLONS	DOLLARS
Aviation Fuel	36,255.1	\$ 20,641.5	35,938.7	\$ 28,391.9
Regular Gasoline	144.4	119.9	147.2	122.2
Unleaded Gasoline	171.5	147.5	174.3	149.9
Diesel Fuel #1	209.6	171.9	215.7	176.9
Diesel Fuel #2	44.7	36.6	44.7	36.6
Fuel Oil #1	51.4	42.1	51.4	42.1
Fuel Oil #2	1,414.9	1,160.2	1,566.6	1,284.6
Fuel Oil #6	909.5	691.2	909.5	691.2
Total	39,201.1	\$ 31,010.9	39,048.1	\$ 30,895.4

Source: 410 BMW/LGS

ENERGY

TYPE	QUANTITY (IN 000)	TOTAL COST (IN 000)
Electricity (KWH)	58,753.3	\$ 3,590.4
Coal (Tons)	11.4	758.3
Heating Oil/Propane (Gallons)		
FS-1	49.3	\$ 40.4
FS-2	1,363.5	1,118.1
FS-6	1,357.9	1,032.0
DF-1	7.5	6.2
DF-2	28.7	23.5
Propane	40.0	35.1
Total Oil/Propane	2,847.3	\$ 2,255.3
Natural Gas (CCF)	83.9	35.0
Water (Gallons)	414,647.0	<u>278.0</u>
Total		<u>\$ 6,917.8</u>

There was a total of 115 energy related Civil Engineering work orders in FY86.

HOSPITAL



HOSPITAL DATA

Operating Expenses (000)	FISCAL YEAR 85 (000)	FISCAL YEAR 86 (000)
Civilian Pay	\$ 620.1	\$ 611.3
Military Pay	6,554.1	6,684.6
Supplies	887.5	950.8
Equipment	21.3	27.6
Contract Services	269.2	414.0
CE Cost, Utilities	692.5	786.0
Investment Equipment	61.8	131.3
Other Costs	488.9	314.1
Subsistence	1.4	1.1
Total	\$ <u>9,596.8</u>	\$ <u>9,920.8</u>

Usage:

Population Served	17.3	17.3
Number of Outpatient Visits	86.6	85.5
Number of Prescriptions Filled	96.6	117.4
Admissions	1.3	1.2
Medical Air Evacuations	.5	.7
Number of Immunizations	17.3	25.5
Number of X-Rays	17.1	16.6
Bed Authorizations	.1	.1

Champus Payments	FY 84	FY 85	FY 86
	\$ 583,017	\$ 676,405	\$ 834,948

COMMUNITY PROJECTS



COMMUNITY PROJECTS

Combined Federal Campaign

\$109,737 were raised, 120% of the Goal

Base Tours

The annual open house drew a record crowd of 60,000 people

Base units hosted 20 squadron open houses.

During FY 86 1800 people participated in 102 base tours.

Other:

\$37,631 was raised through the Air Force Assistance Fund

Base families received \$12,672 and 93 food baskets through Operation Warmheart.

National-level organizations that have large military membership from the base:

Kiwanis

Masonic Lodge

Lions Club

American Legion

Knights of Columbus

Association of Old Crows

Veterans of Foreign Wars

Cub/Boy Scouts

Girl Scouts

Daedallians

Air Force Association

Noncommissioned Officers Association

Air Force Sergeants Association

American Society of Military Comptrollers

Air Force Navigators Association

Company Grade Officers Committee

Explorer Scouts

Source: 410 BMW/PA

EDUCATION DEMOGRAPHY

	Chief Master Sergeant	Senior Master Sergeant	Master Sergeant	Technical Sergeant	Staff Sergeant	Sergeant	Senior Airman	Airman First Class	Airman	Airman Basic
Age										
17-20	0	0	0	0	0	0	1	191	212	36
21-25	0	0	0	1	164	292	251	448	65	29
26-30	0	0	2	67	407	118	51	33	5	2
31-35	0	2	37	167	142	11	1	1	0	1
36-40	3	25	122	101	32	1	0	0	0	0
41-45	9	13	27	8	2	0	0	0	0	0
46-60	3	6	2	0	0	0	0	0	0	0
Years of Service										
0-4	0	0	0	0	19	198	296	672	282	67
5-10	0	0	2	52	596	221	6	1	0	1
11-15	0	0	28	183	112	2	2	0	0	0
16-20	3	21	133	106	20	1	0	0	0	0
21-25	6	17	27	3	0	0	0	0	0	0
26-30	6	8	0	0	0	0	0	0	0	0
31-50	0	0	0	0	0	0	0	0	0	0
Degree Held										
Some HS	0	0	0	2	3	1	2	2	0	0
HS Grad	0	1	32	131	343	247	159	420	250	66
15-59*	7	15	84	129	318	149	110	206	31	2
60-89*	3	10	38	47	51	17	21	25	1	0
90+*	1	2	5	5	6	2	1	5	0	0
Bachelors	3	3	5	12	12	4	7	9	0	0
Masters	0	1	1	0	0	0	0	0	0	0
Other	1	14	25	18	14	2	4	6	0	0

* Number of Semester Hours towards a degree.
 Other = GED Equivalent or Masters+
 HS = High School

EDUCATION DEMOGRAPHY (con't)

	Chief Master Sergeant	Senior Master Sergeant	Master Sergeant	Technical Sergeant	Staff Sergeant	Sergeant	Senior Airman	Airman First Class	Airman	Airman Basic
Age										
17-20	0	0	0	0	0	0	1	191	212	36
21-25	0	0	0	1	164	292	251	448	65	29
26-30	0	0	2	67	407	118	51	33	5	2
31-35	0	2	37	167	142	11	1	1	0	1
36-40	3	25	122	101	32	1	0	0	0	0
41-45	9	13	27	8	2	0	0	0	0	0
46-60	3	6	2	0	0	0	0	0	0	0
Years of Service										
0-4	0	0	0	0	19	198	296	672	282	67
5-10	0	0	2	52	596	221	6	1	0	1
11-15	0	0	28	183	112	2	2	0	0	0
16-20	3	21	133	106	20	1	0	0	0	0
21-25	6	17	27	3	0	0	0	0	0	0
26-30	6	8	0	0	0	0	0	0	0	0
31-50	0	0	0	0	0	0	0	0	0	0
Degree Held										
Some HS	0	0	0	2	3	1	2	2	0	0
HS Grad	0	1	32	131	343	247	159	420	250	66
15-59*	7	15	84	129	318	149	110	206	31	2
60-89*	3	10	30	47	51	17	21	25	1	0
90+*	1	2	5	5	6	2	1	5	0	0
Bachelors	3	3	5	12	12	4	7	9	0	0
Masters	0	1	1	0	0	0	0	0	0	0
Other	1	14	25	18	14	2	4	6	0	0

* Number of Semester Hours towards a degree.
 Other = GED Equivalent or Masters+
 HS = High School

EDUCATION

FISCAL YEAR 1986	FALL	WINTER	SPRING	SUMMER
Number of Courses Offered	38	39	15	9
Number of Students				
Military	266	265	91	73
Military Dependent	54	55	24	13
Civilian	<u>81</u>	<u>60</u>	<u>83</u>	<u>59</u>
Total	<u>401</u>	<u>380</u>	<u>198</u>	<u>145</u>
Graduate				
Military	54	63	30	
Military Dependent	3	1	3	
Civilian	<u>36</u>	<u>26</u>	<u>13</u>	
Total	<u>93</u>	<u>90</u>	<u>46</u>	
Total Number of Students	494	470	244	
Number of Enrollments				
Undergraduate	609	585	230	116
Graduate	<u>106</u>	<u>99</u>	<u>45</u>	<u>37</u>
Total	<u>715</u>	<u>684</u>	<u>275</u>	<u>153</u>
Credit Hour Production				
Undergraduate	2,319	2,207	840	450
Graduate	<u>424</u>	<u>396</u>	<u>176</u>	<u>140</u>
Total	<u>2,743</u>	<u>2,603</u>	<u>1,016</u>	<u>590</u>
Tuition Revenue				
Undergraduate	\$ 131,023.00	\$ 119,178.00	\$ 45,360.00	\$ 24,300.00
Graduate	<u>30,316.50</u>	<u>27,126.00</u>	<u>12,056.00</u>	<u>10,138.00</u>
Total	<u>\$ 161,339.50</u>	<u>\$ 146,304.00</u>	<u>\$ 57,416.00</u>	<u>\$ 34,438.00</u>

Total amount of Tuition Assistance provided active duty Air Force Members for FY86 was \$202,700.00.

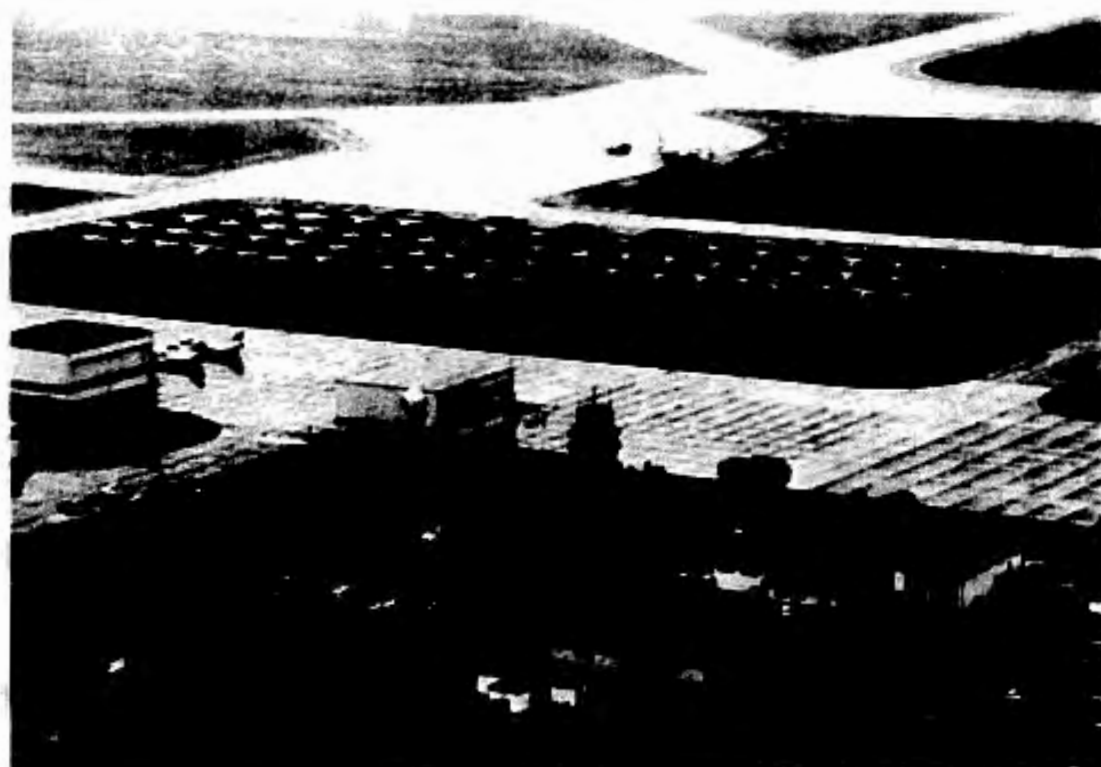
SCHOOL IMPACT AID

Revenue Class Categories	Students	Revenue (000)
Dependents Residing On Base		
Regular	1,097	\$ 2,262.0
Special Education	50	154.7
Dependents Residing Off Base		
Uniformed	225	6.8
Civilian	182	5.5
Special Education	<u>19</u>	<u>0.5</u>
Total	1,573	\$ 2,429.5



Source: Gwinn Public Schools

\$ CAPITAL ASSETS \$



CAPITAL ASSETS

Land		ACRES	
Public Domain		160	
Fee Owned		2,751	
Easements, Rights of Way		290	
Leases		2,001	
Total Acreage		5,202	
Runway Length		12,300	Ft
Buildings			
Industrial			
Aircraft Maintenance (a)		16	
Civil Engineering (b)		18	
Base Supply Warehouses (c)		8	
Administration (d)		15	
Quarters (Single/Unaccompanied)			
Officer (4 - 24 Persons)		7	
Enlisted (142 - 152 Persons)		9	
Temporary Lodging Facility (20 Units)		4	
Housing Units	# UNITS		
Capehart	1395	462	
Relocatable	98	98	
Appropriated	200	100	
Trailer Pads	199	0	
Total	<u>1892</u>	660	
Commissary			1
Recreation			
Outdoors	25		
Indoors			26
Hospital (50 Bed Capacity)			<u>1</u>
Total Facilities			765

NOTES:

- (a) Includes two multipurpose buildings.
- (b) Includes one multipurpose building.
- (c) Includes three multipurpose buildings.
- (d) Includes eleven multipurpose buildings.

SQUARE FOOTAGE

TYPE OF BUILDING:	SQUARE FOOTAGE (in 000)
Industrial	685.1 *1
Administration	214.0
Unaccompanied Officer Quarters	34.4
Visiting Airman Quarters	1.9
Visiting Officer Quarters	13.1
Base Housing	2,967.1
Commissary	37.3
Hospital	113.8
Recreation	253.1 *2
Exchange Facilities	25.4
Gas Station	3.1
Dormitories	213.8
Training	19.6
Storage	185.4
Personnel Service and Support	<u>73.2</u>
Total	4,840.3

*1) Increase of approximately 21,369 square feet for readiness crew, BE CV storage, and waste treatment building.

*2) Increase of approximately 9,677 square feet for Library, Golf Club equipment storage, Package Store, Gym, and Chapel.

AUTOMATIC DATA PROCESSING

Type of Equipment	Number of Units	Individual Cost
IBM (Commissary)	1	\$ 20.9
TLC (Equipment)	14	74.1
Sperry (1100/60, 53 Terminals)	1	1,310.1
ALSPA (Personal Computer)	1	5.8
Hewlett Packard	2	41.6
Tandy (TRS-80)	4	1.3
Data Point (Hospital)	1	70.0
Zenith (Personal Computers)	57	213.6
Digital Equipment	1	42.6
DEQ (Hospital)	1	22.0
Sperry PCs	10	22.4
Word Processors	40	400.2
Sperry Equipment	16	52.8
Total	149	<u>\$2,277.4</u>



COMMUNICATIONS

COMMUNICATIONS CENTER

Standard Remote Terminal	1
Medium Speed Printers	2
Card Punch	1
Card Reader	1
Paper Tape Reader	1
Sperry/UNIVAC Keypunch Units	1
Magnetic Tape Units	3
Optical Scan Unit	1
Line Control Unit	1
Storage Module Disk Drive	1

LAND MOBILE RADIOS

FM radio systems (Command/Control and nontactical communications using 23 RF frequencies)	12
Base Stations	17
Remote Controls	32
Mobile Radios	188
Portable Radios	365

LAND MOBILE RADIOS (cont)

Pagers	153
Alert Receivers	59
Universal Number Interchange (number assignments and changes for pagers)	1

TELEPHONE SYSTEMS

Customer Administration Panel (translation changes and modifications in the Private Branch Exchange (PBX) system)	1
Dimension 2000 Attendant Consoles (computerized, push-button switchboard operations)	2
Dimension 600 (SAC Operational Conferencing System)	1
Interfaces connected to 608D switchboard (Commander's radio net Pager system)	2
Telephone Lines	1,438
Telephone Instruments	4,609
AUTOSEVOCOM line (secure voice communications between bases)	1
Primary Alerting System (voice network which provides a fast and reliable means to alert subordinate units through a broadcasting system)	1

Source: ISS

NAVIGATION

Area Surveillance Radar (GPN-12 ASR) - used for radar detection on aircraft for local traffic control.

BRITE II (GPA 133) - used for control of air traffic by the tower. Information for display comes from FPN 47.

Precision Approach Radar (FPN 62-PAR) - used for low approaches and landings. This model is rotatable and can be used for approaches from either the north or the south. PAR gives Approach Control a visual indication of the glide angle and azimuth of the landing craft, which is then given guidance by voice.

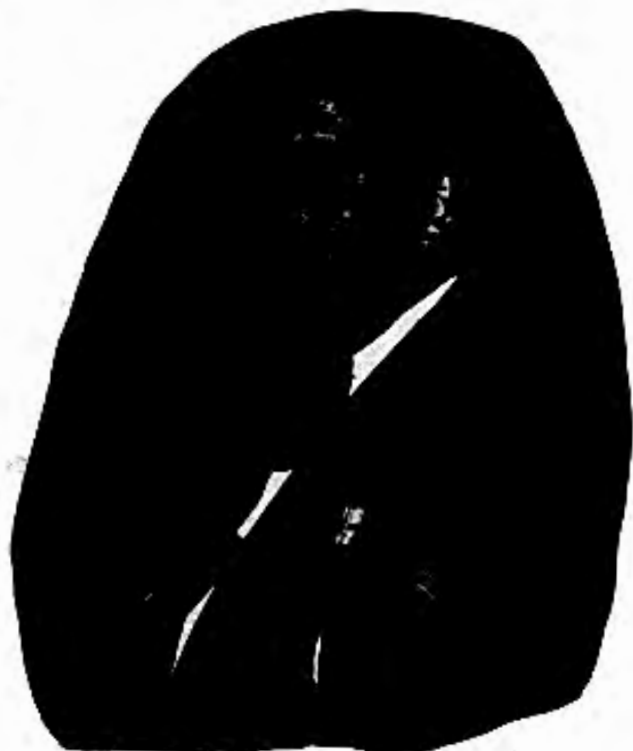
Terminal VHF Omirange (FNR 31 TVOR) - ground station gives bearing indication to planes equipped with VOR receiver.

Tactical Air Navigation (GRN 28B TACAN) - ground station gives bearing and Distance Measuring Equipment information to aircraft having TACAN receiver. More accurate and longer range than the TVOR.

Instrument Landing System (GRN 27 ILS) - used to give aircraft with ILS receiver vertical and horizontal guidance for low approach landings.

Source: ISS

PERSONNEL



PERSONNEL DATA

Appropriated Fund Employees	HOST	TENANT	TOTAL
Military			
Officer	526	12	538
Enlisted	<u>2,904</u>	<u>195</u>	<u>3,099</u>
Total	<u>3,430</u>	<u>207</u>	<u>3,637</u>
Civilian			
General Schedule (GS)	234	34	268
Wage Grade (WG)	268	47	315
Other	<u>27</u>	<u>0</u>	<u>27</u>
Total	<u>529</u>	<u>81</u>	<u>610</u>
Total Appropriated Fund Employees	3,959	288	4,247
Other Base Employees	FULL TIME	PART TIME	INTERMITTENT
Nonappropriated Fund	51	40	153
Base Exchange	28	45	74
Credit Union	9	3	12
Base Bank	4	11	15
Total Other Base Employees	92	99	227
Dependents	On Base 4,047	Off Base 884	4,931
Total Base Personnel			<u>9,178</u>
Contract Employees (Equivalent Full Time)			215
Retired Military Personnel			
Air Force			566
Army			243
Navy			156
Marine Corps			39
Total			<u>1004</u>

PERSONNEL DATA (con't)

RANK	AUTHORIZED	ASSIGNED	% MANNED	% of TOTAL
Officers				
General	1	0	0%	0%
Colonel	9	8	89%	1%
Lieutenant Colonel	40	30	75%	6%
Major	92	84	91%	16%
Captain	200	216	108%	40%
Lieutenant	<u>134</u>	<u>200</u>	<u>149%</u>	<u>37%</u>
Total	476	538	113%	100%
Enlisted				
Chief Master Sergeant	18	15	83%	< 1%
Senior Master Sergeant	46	44	96%	1%
Master Sergeant	178	193	108%	6%
Technical Sergeant	319	344	108%	11%
Staff Sergeant	646	758	117%	24%
Senior Airman/Sergeant	714	720	101%	23%
Airman First Class	985	666	68%	22%
Airman	0	293	N/A	10%
Airman Basic	<u>0</u>	<u>66</u>	<u>N/A</u>	<u>2%</u>
Total	2,906	3,099	107%	100%
Total Base Personnel	<u>3,382</u>	<u>3,637</u>	<u>108%</u>	

\$ VALUE OF RESOURCES



\$ RESOURCES \$

Aircraft

B-52	\$ 1,082,000.0
KC-135A	502,500.0
T-37	<u>3,000.0</u>
Total Value	\$ 1,587,500.0

Capital Assets \$ 141,403.6

Data Processing Equipment \$ 2,277.4

Equipment

Appropriated Fund	\$ 76,125.1
Nonappropriated Fund	222.9
Base Exchange	<u>462.5</u>
Total	\$ 76,810.5

Inventories

Stock Fund	
General Support	\$ 3,067.6
Systems Support	1,815.9
Aviation Fuels	1,867.5
Ground Fuels	25.1
Commissary	\$ 945.7
Medical/Dental	<u>212.5</u>

Total \$ 7,934.3

Non-Stock Fund * \$ 59,028.0

Nonappropriated Fund \$ 153.6

Base Exchange \$ 1,586.0

Total \$ 68,701.9

Education Impact Aid Funds 2,509.9

Total Resources on Hand \$1,879,203.3

* Represents Depot Funded Items on Hand

\$ EXPENSES

(000's)

Operations and Maintenance (O&M) Expenses (Excluding Civilian Pay)

	HOST	TENANT	GSUs*	TOTAL
Travel	\$ 1,041.8	\$ 79.7	\$ 48.2	\$ 1,169.7
Transportation of Property	145.9	0.0	47.5	193.4
Equipment Rentals	47.2	0.0	5.0	52.2
Purchased Equipment Maint	274.3	0.0	24.1	298.4
Utilities (Electric)	1,590.4	0.0	94.8	1,685.2
Communications	736.5	0.0	2.7	739.2
Facility Projects	2,657.4	0.0	266.1	2,923.5
Contract Services	3,006.1	175.1	95.3	3,276.5
Supplies	11,652.9	0.0	314.2	11,967.1
Equipment	783.5	0.0	109.2	892.7
Heating Fuels	1,846.6	0.0	134.9	1,981.5
Ground Fuels	434.4	0.0	.9	435.3
Total O&M Expenses	\$ 24,217.0	\$ 254.8	\$ 1,142.9	\$ 25,614.7

Other Funded Programs

Investment Equipment	\$ 288.2	\$ 0.0	\$ 0.0	\$ 288.2
Claims	120.9	0.0	0.0	120.9
Military Family Housing	3,351.9	0.0	110.5	3,462.4
Total Other Programs	\$ 3,761.0	\$ 0.0	\$ 110.5	\$ 3,871.5
Total Annual Expenses	\$ 27,978.0	\$ 254.8	\$ 1,253.4	\$ 29,486.2

Retail Sales

Commissary Sales	\$ 9,363.1	\$ 0.0	\$ 0.0	\$ 9,363.1
Base Exchange Sales	9,400.0	0.0	0.0	9,400.0
Total Retail Sales	\$ 18,763.1	\$ 0.0	\$ 0.0	\$ 18,763.1

* GSUs = Geographically Separated Units

SOURCES: AFCCMS, 410 BMW/ACB

PAYROLL EXPENSES

Appropriated Fund	
Military	\$ 76,902.8
Civilian	<u>8,922.8</u>
Total	\$ 85,825.6
 Nonappropriated Fund	 1,618.5
 Base Exchange	 1,034.4
 Bank	 96.0
 Credit Union	 142.0
 Retired Military Payroll	 <u>10,080.0</u>
 Total Payroll Expenses	 <u><u>\$ 98,796.5</u></u>

Sources: Credit Union, Bank, 410 BMW/ACF; ACM, 410 CSG/SSF;

LOCAL CONTRACTS



CONTRACTING

CONTRACTS AWARDED BY AREA	FISCAL YEAR 1985	FISCAL YEAR 1986
Central Upper Peninsula, MI	\$ 5,661,504	\$ 5,086,764
Other Upper Peninsula, MI	5,079,932	4,692,483
Lower Peninsula, MI	3,599,106	1,790,379
Wisconsin	1,657,064	1,836,728
Other	<u>10,588,047</u>	<u>8,283,137</u>
Total	\$26,585,653	\$21,689,491

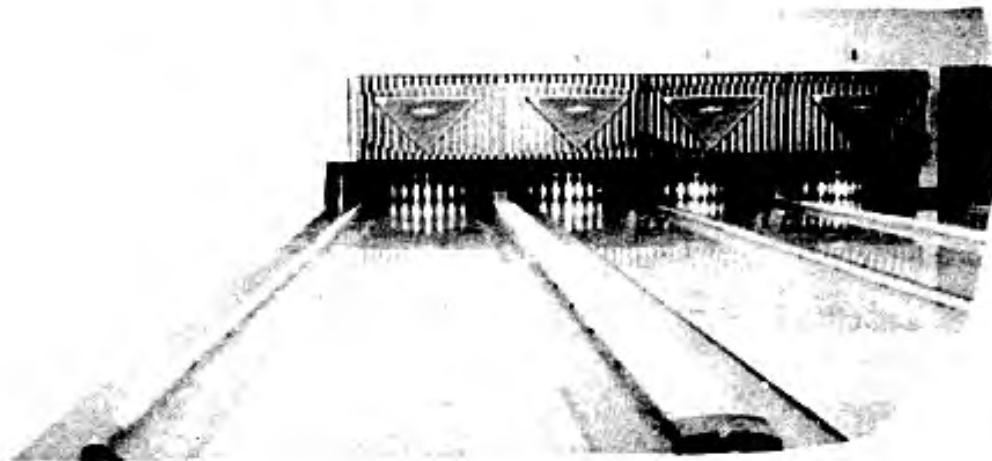
CONTRACTS AWARDED BY TYPE	FISCAL YEAR 1985	FISCAL YEAR 1986
Construction	\$10,726,376	\$ 5,598,714
Fuel Oil	2,053,473	2,269,567
Supplies & Equipment	5,034,368	4,635,864
Utilities	3,585,311	3,343,336
Services	1,709,536	1,188,239
Nonappropriated Fund Items	121,071	522,481
Other	<u>3,355,518</u>	<u>4,131,290</u>
Total	\$26,585,653	\$21,689,491

Total Small Business Awards	FY86 - 25,515 Awards	\$ 19,245,084
Small Business Awards Central Upper Peninsula	FY86 - 4,133 Awards	\$4,839,138
Purchase Requests/Line Items Received		13,202
Total Actions		28,750

Champus Payments	Fiscal Year 84	Fiscal Year 85	Fiscal Year 86
	\$ 583,017	\$ 676,405	\$ 834,948

Sources: USAF HOSP/SGR, 410 BMW/LGC

MORALE, WELFARE, AND RECREATION

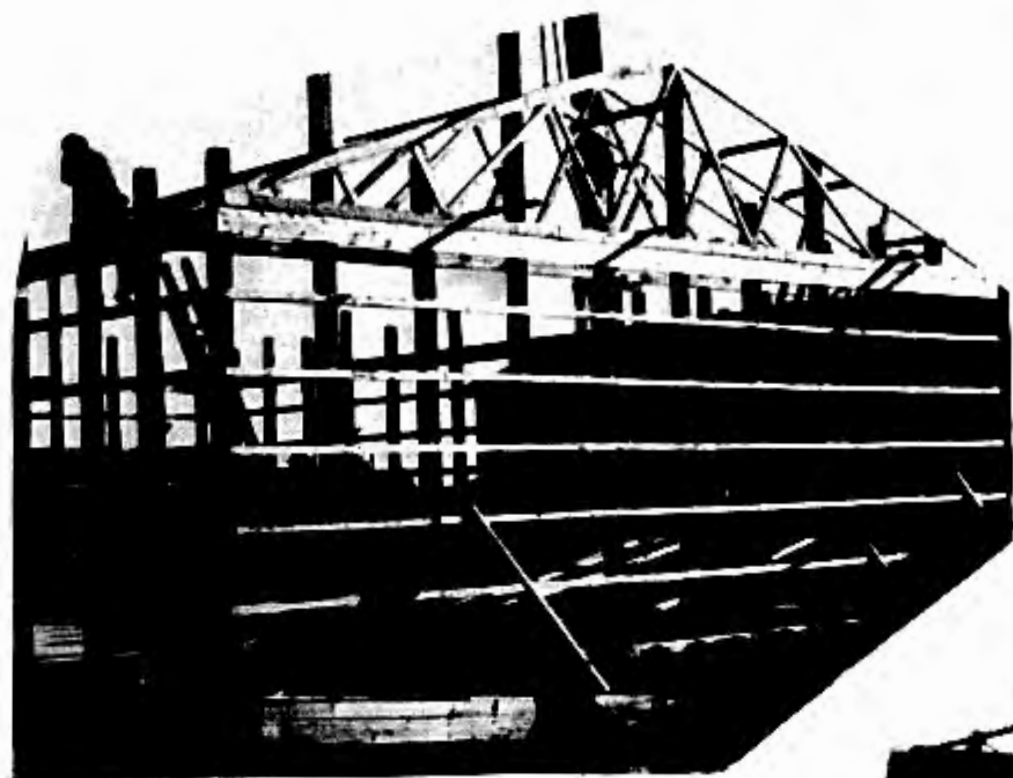


MORALE WELFARE & RECREATION

Military Welfare Fund	INCOME	EXPENSES	NET INCOME (LOSS)
Administration	\$ 140.3	\$ 104.3	\$ 36.0
Athletic	9.7	53.7	(44.0)
Bowling	414.6	331.5	83.1
Golf Facilities	148.5	101.1	47.4
Outdoor Recreation	35.3	63.2	(27.9)
Supply Services	35.6	35.3	.3
Recreation Center	40.3	54.8	(14.5)
Arts and Crafts	66.7	106.8	(40.1)
Youth Activities	31.0	65.4	(34.4)
Library	8.7	33.5	(24.8)
Family Services	.4	6.3	(5.9)
Unit Funds	3.0	3.3	(.3)
Child Care Center	253.8	230.9	22.9
Veterinary Services	20.4	14.0	6.4
Fitness Center	26.6	52.3	(25.7)
Miscellaneous	5.2	37.3	(32.1)
Special	0.0	2.7	(2.7)
Other	.9	1.3	(.4)
Total	\$1,241.0	\$1,297.7	\$ (56.7)
Officer's Open Mess	\$ 425.7	\$ 426.6	\$ (.9)
NCO Open Mess	\$1,083.5	\$1,038.4	\$ 45.1
Billeting	\$ 107.9	\$ 104.3	\$ 3.6
Temporary Lodging Facility	\$ 98.0	\$ 80.8	\$ 18.0
Class VI Store (Package Store)	\$ 537.3	\$ 483.6	\$ 53.7
NAFFMB	\$ 151.8	\$ 151.8	\$ 0
Grand Total	<u>\$3,646.0</u>	<u>\$3,583.2</u>	<u>\$ 62.8</u>

Source: 410 CSG/SSP

CONSTRUCTION PROJECTS



**BEST COPY
AVAILABLE**

CONSTRUCTION PROJECTS

OPERATIONS AND MAINTENANCE - MAIN BASE

Completed in Fiscal Year 1986	(000's)		
Alter/Repair Airmen Dormitory		\$ 609.5	
Retube Boiler #4		185.8	
Repair NCO Open Mess		150.0	
Alter Base Gym		146.4	
Construct Fire Training Smokehouse		129.4	
Construct Ballfield		89.5	
Addition to Chapel I		89.5	
Repair Hot Water Line Cover		35.6	
Alter/Repair VOQ		477.4	
Repair Ces. Distribution, Base		320.0	
Repair Soil Cement, POL		178.3	
Salt Storage Facility		121.2	
Paint Walls and Halls, Alert		6.7	
Replace Signs		45.5	
Alter/Repair Coal Elevator		21.8	
Replace OHD Doors, Pavements and Grounds		4.7	
Alter/Repair Maintenance Shop Roof		9.0	
Alter Bldg 400, MMS		85.9	
Alter Bldg 402, MMS		17.0	
Insulate Attic, Bldg 726		11.0	
Paint Logo, Base Water Tower		2.4	
Forward OPS Maintenance Facility		193.0	
Total			<u>2,929.6</u>
In Progress			
Alter/Repair Rec Center		182.4	
Repair Heat, Corr/Fuel Docks		238.0	
Repair Elec Service, Docks		32.6	
Add to Fuel Cell Dock		93.8	
Alter Fuel Tanks, 3, 4 and 5		244.5	
Repair Heat System, NCO Club		86.4	
Alter/Repair Grounding System		54.5	
Repair Security Fence, WSA/AAPA		152.6	
Alter Engineering		98.5	
Replace Heat System, Gym		79.3	
Alter/Repair UOPH (BOQ)		432.8	
Alter 740, Engine I & R Shop		189.0	
Total			<u>1,884.4</u>

CONSTRUCTION PROJECTS (con't)

(000's)

Approved/Awarded for Construction		
Seal Metal Roofs	68.5	
Paint Turntable/Towers	10.9	
Maintain POL Fuel Tanks	176.3	
Alter/Repair Well Controls	14.3	
Alter/Repair Upper Dorms	448.0	
Alter/Repair Fuel Tank	56.5	
Repair Substation Switchgear	74.3	
Alter/Repair Bldg 404, PMEL	231.9	
Alter/Repair Heat System	9.9	
Alter/Repair Well Number 5	24.5	
Total	<u>68.5</u>	\$ 1,115.1
Total Main Base Projects		\$ <u>5,929.1</u>

CONSTRUCTION PROJECTS (con't)

OPERATIONS AND MAINTENANCE - MILITARY FAMILY HOUSING

Completed in Fiscal Year 1986	(000's)	
Garages, Capehart (368 units)		\$ 2,826.2
Paint Basement Walls		117.4
Refinish Vanities		8.9
Replace Garage Doors		11.3
Replace Kitchen Fans		18.5
Replace Light Fixtures		23.1
Replace Garage Doors		26.1
Replace Light Fixtures		25.1
Replace Rear Doors		24.9
Replace Ext Light Fixtures		4.0
Replace Bifold Doors		37.8
Replace Baths		53.7
Upgrade/Repair Housing		3,927.0
Repair Primary Electrical Distribution		179.8
Alter/Repair Fire Damaged Unit		22.0
Alter/Repair Burnt Multiplex Roof		38.4
Natural Gas Conversion Distribution		1,063.2
House Doctor - Phase I		42.0
Paint Interiors		129.6
Maintain Wood Floors		177.9
Total		<u>\$ 8,756.9</u>
In Progress		
Repair Built-Up Roofs		296.6
Replace Parquet Floors		32.9
Natural Gas Conversion in Housing		1,998.0
Refinish Wood Floors		114.0
Paint Interior, Housing		121.5
Total		<u>\$ 2,563.0</u>
Awarded for Construction - None		
Total Military Family Housing Projects		<u>\$ 11,319.9</u>
Total Operations and Maintenance Projects		<u>\$ 17,249.0</u>

Source: 410 CSG/DE

CONSTRUCTION PROJECTS (con't)

(000's)

Military Construction Program

Completed in FY86

Upgrade Sewage Plant
Add/Alter Ready Crew
Total

\$ 3,810.8
1,539.0

\$ 5,349.8

In Progress

Extend High Temp Hot Water Mains
ALCM Support Facilities, Phase 1
Add'n Recreation Library
Refueling Vehicle Heated Parking
ALCM Support Facilities, Phase 2
Total

1968.3
11,085.0
747.5
672.0
15,056.0

\$29,528.8

Approved/Awarded for Construction - None

Total Military Construction Program

\$34,878.6

Non-Appropriated Fund Projects

Completed in FY86

Alter Hobby Shop
Add to Package Store
Total

124.6
65.7

190.3

In Progress

Golf Course Addition

486.8

Approved/Awarded for Construction

Replace Reefer System, Commissary

125.8

Total Nonappropriated Funds Projects

802.9

GRAND TOTAL - CONSTRUCTION PROJECTS

52,938.6

Source: 410 CSG/DE

\$ ECONOMIC IMPACT

Variable Name ERIS Chart	A. Entry Amount \$	B. Adjust Factors (Attachment 3)	C. (A x B) Local Amount	D. Variable in ERIS Equation
GROSS PAYROLL:				
Military On Base	\$ 84,379,400	0.720x0.30	\$ 18,225,950	Ymon
Military Off Base	22,430,000	0.720x0.50	8,074,800	Ymoff
Civilian Civ. Svc.	9,991,900	0.893x0.55	4,907,522	Ycs
Civilian NAF-AAFES	2,652,900	0.55	1,459,095	Yc
PROCUREMENTS:				
Services Total	1,188,239	0.524x0.55	342,450	Ys
Services Total	1,188,239	0.183	217,448	Ms
All Other in EIR	14,380,057	1.000	14,380,057	Mp
CONSTRUCTION:				
Construction	5,598,714	0.384x0.55	1,182,448	Ycon
Construction	5,598,714	0.600	3,359,228	Mc
EDUCATION	2,429,374	1.000	2,429,374	E
HEALTH	1,100,248	1.000	1,100,248	H
TDY	388,769	1.000	388,769	T
TOTAL Local Amount (Column C).....			\$ <u>56,067,389</u>	Tloc
MILITARY RETIREMENT PAY	\$ <u>10,080,000</u>			Yret

SECONDARY JOBS CREATED

$$(Y_{mon} + Y_{off} + Y_{cs} + Y_c) \times (M - 1) / 69,900$$

$$18,225,956 + 8,074,790 + 4,907,522 + 1,459,095 \times 2.0049 - 1$$

$$32,827,433 / 69,900 = 469.63$$

$$(Y_s + Y_{con} + E + H + T) \times M / 69,900$$

$$342,450 + 1,182,448 + 2,429,374 + 1,100,248 + 388,769 \times 2.0049$$

$$5,443,289 \times 2.0049 = 10,913,250 / 69,900 = 156.13$$

$$(M_s + M_p + M_c) \times M / 235,980$$

$$217,448 + 14,380,057 + 3,359,228 \times 2.0049$$

$$17,956,733 \times 2.0049 = 36,001,454 / 235,980 = 152.56$$

$$\text{Secondary Jobs Created} = 778$$

The formula used to determine the secondary jobs created was designed to give us an estimate on how many jobs are created locally due to the existence of K.I. Sawyer AFB.

K. I. SAWYER'S ECONOMIC IMPACT

Military Payroll Spent Locally	\$ 26,300,750.00
Civilian Payroll Spent Locally	<u>6,366,617.00</u>
TOTAL PAYROLL	32,667,367.00
Services Contracts	14,939,955.00
Construction Contracts	4,541,676.00
Federal Impact Aid (School)	2,429,374.00
Champus Payments	1,100,240.00
TDY Pay Spent Locally	<u>388,769.00</u>
TOTAL LOCAL AMOUNT	<u>\$ 56,867,389.00</u>
Gross Income Multiplier	x 2.0049
TOTAL ECONOMIC IMPACT	<u><u>\$ 112,409,508.00</u></u>
TOTAL ECONOMIC IMPACT OF MILITARY RETIRED PAY	\$ 11,115,116.00

Source: 410 BMW/ACC

DISTRIBUTION

CIVILIAN

Governor, State of Michigan
U.S. Senators (2)
U.S. Representative, 11th District
State Senators (2)
State Representatives (3)
Marquette City Manager
Mayor of Marquette
Marquette Chamber of Commerce (5)

Mayor of Negaunee
Mayor of Ishpeming
Mayor of Escanaba
Forsyth Twsp Supervisor
Sands Twsp Supervisor
West Branch Twsp Supervisor
Economics Club of Marquette
Marquette Jaycees (5)

DEPARTMENT OF DEFENSE

HQ SAC/ACC (8)	410 BMW/CC	USAF HOSP (2)	46 AREFS/CC
8 AF/ACC	410 BMW/CV	410 CSG/CC	307 AREFS/CC
40 AD/CC (3)	410 BMW/DO	410 CSG/CD	410 AMS/CC
AFAA Office	410 BMW/MA	410 CSG/CCQ	410 FMS/CC
SACMET	410 BMW/RM	410 CSG/DA	410 MMS/CC
AFOSI, Det 512	410 BMW/AC	410 CSG/DP	410 OMS/CC
71 FTW, OL-A	410 BMW/HO (4)	410 CSG/DW	410 SUPS/CC
U. S. Army Corps of Engineers	410 BMW/LGC	410 CSG/HC	410 TRNSS/CC
AAFES	410 BMW/LGX	410 CSG/JA	410 CES/CC
SATAP	410 BMW/PA (80)	410 CSG/OT	410 SPS/CC
AFCOMS, OL TG	410 BMW/SE	410 CSG/SS	410 SVS/CC
	410 BMW/SL	644 BMS/CC	2001 ISS/CC

CRITIQUE

The Economic Resource Impact Statement is a recurring product which provides information about the base to military and civilian dignitaries, and to functional managers throughout the base. The full potential of this brochure cannot be realized unless it is used and improved. Any comments, questions, or suggestions for improving the brochure will be greatly appreciated. The areas below and on the back of this page have been provided for you to let us know if the brochure is meeting your needs and provides the information you require. If we don't hear from you, we can only assume you are pleased with the contents and format of the brochure.

* * * * *

FROM: _____

_____ Date

SUBJECT: Critique of the FY86 Economic Resource Impact Statement - K. I. Sawyer AFB, MI

TO: 410 BMW/ACC
K. I. Sawyer AFB, MI 49843-5000

1. The Economic Resource Impact Statement has/has not been useful to me because

2. The selection of information/statistics included in the brochure is
___ Outstanding ___ Excellent ___ Satisfactory ___ Marginal ___ Unsat.

3. The administrative/publishing quality of the brochure is
___ Outstanding ___ Excellent ___ Satisfactory ___ Marginal ___ Unsat.

4. The following areas should be added, deleted, or revised as indicated:

<u>AREA</u>	<u>PROPOSED CHANGE</u>
-------------	------------------------

Name/Grade

Position

Address

Phone Number

